



Gas Distribution Services Default Price-Quality Path
Determination 2013

Compliance Statement

4 December 2014

Assessment period ending 30 September 2014

Table of Contents

- 1. Introduction..... 3
 - 1.1. Background..... 3
 - 1.2. Statement of compliance 3
 - 1.3. Disclaimer 3
- 2. Price Path..... 5
- 3. Quality standards 8
 - 3.1. Introduction..... 8
 - 3.2. RTE Results for the Assessment Period 8
 - 3.3. Exclusions 9
 - 3.4. Policies and procedures for recording the RTE statistics 9
- 4. Appendices 11

1. INTRODUCTION

1.1. Background

- 1.1.1 This Compliance Statement ("the Statement") is submitted by Vector Limited ("Vector") pursuant to *clause 11* of the Gas Distribution Services Default Price-Quality Path Determination 2013 ("the Determination").
- 1.1.2 The Determination is issued pursuant to Part 4 of the Commerce Act 1986 and requires Gas Distribution Businesses ("GDB's") to provide information to the Commission relevant to the assessment of their performance against the price path and quality standards.
- 1.1.3 Under *clause 8* of the Determination a GDB's notional revenue must not exceed the allowable notional revenue during the current assessment period.
- 1.1.4 Under *clause 9* of the Determination a GDB must comply with the annual quality assessment formula for Response Time to Emergencies ("RTE") over the current assessment period.
- 1.1.5 The Statement has been prepared on 4 December 2014. In the Statement, references to Vector relate only to Vector's gas distribution business.

1.2. Statement of compliance

- 1.2.1 As required by *clause 11.2(a)* of the Determination, this Statement confirms Vector's compliance with the price path in *clause 8* and the quality standards in *clause 9* in respect of the assessment period ending on 30 September 2014.
- 1.2.2 With reference to *clause 11.5* of the Determination, this statement confirms that *clause 10* did not apply in respect of the assessment period ending on 30 September 2014.

1.3. Disclaimer

- 1.3.1 The information contained in the Statement has been prepared for the express purpose of complying with the requirements of *clause 11* of the Determination.

The Statement has not been prepared for any other purpose. Vector expressly disclaims any liability to any other party who may rely on the Statement for any other purpose.

- 1.3.2 For presentation purposes some numbers in the Statement have been rounded. In most cases calculations are based on more detailed numbers. This may cause small discrepancies or rounding inconsistencies when aggregating some of the information presented in the Statement. These discrepancies do not affect the overall compliance calculations which are based on the more detailed information.

2. PRICE PATH

2.1. Introduction

2.1.1. In this section Vector demonstrates that it has complied with the price path requirements in clause 8 of the Determination. Vector has provided information to support the statement of compliance including:

- a) the amount of allowable notional revenue, the amount of notional revenue, prices, quantities, units of measurement associated with all numeric data and other relevant data, information and calculations;
- b) the amount of pass-through costs and recoverable costs that were used to calculate allowable notional revenue and notional revenue, the supporting data, information, and calculations used to determine those amounts, including when each pass-through cost and recoverable cost amount was paid and the period to which those costs relate.

2.2. Price path (clause 8 of the Determination)

2.2.1. As required by clause 8 of the Determination, in order to demonstrate compliance with the price path, GDB's must demonstrate that their notional revenue during the assessment period has not exceeded the allowable notional revenue for the assessment period. The current assessment period is the first assessment period and covers the 15 months to 30 September 2014.

2.2.2. Vector complies with the price path for the first assessment period, in accordance with clause 8.4(a) of the Determination:

$$0.25 \times ANR_{2013} + ANR_{2014} \geq 0.25 \times NR_{2013} + NR_{2014}$$

$$0.25 \times \$68,934,718 + \$69,891,427 \geq 0.25 \times \$88,041,382 + \$65,102,974$$

$$\$87,125,106 \geq \$87,113,320$$

2.2.3. Vector has calculated allowable notional revenue for the 2013 pricing period in accordance with Schedule 3, Equation 1 of the Determination:

$$ANR_{2013} = \frac{MAR}{\Delta D}$$

$$ANR_{2013} = \frac{\$69,693,000}{1.011}$$

$$ANR_{2013} = \$68,934,718$$

- a) *MAR* is the starting price specified in *Schedule 1, Table 1* of the Determination.
- b) ΔD is the value specified in *Schedule 3, Table 2* of the Determination.

2.2.4. Allowable notional revenue for the 2014 pricing period has been calculated in accordance with *Schedule 3, Equation 2* of the Determination:

$$ANR_{2014} = (ANR_{2013} \times CPR_{2012})(1 + \Delta CPI_{2014})(1 - X)$$

$$ANR_{2014} = (\$68,934,718 \times 1.005)(1 + 0.0088)(1 - 0)$$

$$ANR_{2014} = \$69,891,427$$

- a) CPR_{2012} is the value specified in *Schedule 3, Table 2* of the Determination.
- b) ΔCPI_{2014} is the derived change in the CPI specified in *Schedule 3, Equation 2* of the Determination. Details of how ΔCPI_{2014} was calculated is included in Appendix 1.
- c) X is the rate of change specified in *Schedule 2* of the Determination.

2.2.5. Notional revenue for the 2013 pricing period has been calculated in accordance with clause 8.5(a) of the Determination:

$$NR_t = \sum P_{i,t} Q_{i,t-2} - (K_t + V_t)$$

$$NR_{2013} = \sum P_{i,2013} Q_{i,2011} - (K_{2013} + V_{2013})$$

$$NR_{2013} = \$88,041,382 - (\$0 + \$0)$$

$$NR_{2013} = \$88,041,382$$

- a) Details of $\sum P_{i,2013} Q_{i,2011}$ are included in Appendices 10 to 15
- b) *Clause 8.5(a)* of the Determination requires a nil value for K_{2013} and V_{2013} for the pricing period ending in 2013.

2.2.6. Notional revenue for the 2014 pricing period has been calculated in accordance with clause 8.5(a) of the Determination:

$$NR_t = \sum P_{i,t} Q_{i,t-2} - (K_t + V_t)$$

$$NR_{2014} = \sum P_{i,2014} Q_{i,2012} - (K_{2014} + V_{2014})$$

$$NR_{2014} = \$66,726,531 - (\$1,623,557 + \$0)$$

$$NR_{2014} = \$65,102,974$$

- a) Details of $\sum P_{i,2014} Q_{i,2012}$ are included in Appendices 4 to 9.
- b) Details of K_{2014} and V_{2014} are included in Section 2.3.

2.2.7. Information relating to prices including all relevant quantities and units of measurement is included in Appendices 1 to 5.

2.3. Pass-through and recoverable costs

2.3.1. Vector's notional revenue includes the recovery of a number of pass-through costs for the assessment period. These costs have been determined in accordance with Schedule 5 of the Determination. Table 1 below provides a summary of pass-through costs that were used to calculate notional revenue. Further supporting data, information and calculations used to determine these amounts, including when each pass-through costs was paid, and the period to which those costs relate is provided in Appendix 2.

Table 1: pass-through costs

Pass-through Cost	Amount
Commerce Act Levies	\$ 340,362
Electricity and Gas Complaints Commission Levies	\$ 35,418
Council Rates	\$ 1,247,777
Total	\$ 1,623,557

2.3.2. There are no recoverable costs recovered during the 2014 assessment period.

2.4. Restructuring of prices

2.4.1. Vector has restructured the prices that apply during the 2014 pricing period.

2.4.2. Vector's price restructure has consisted of consolidating multiple price plans under $P_{i,2013}$ to fewer price plans under $P_{i,2014}$. The purpose of the restructure was to combine pricing zone, pressure systems and consumption bands under the $P_{i,2013}$ structure into new categories that only included consumption bands under the $P_{i,2014}$ structure.

2.4.3. In all cases, quantities during the 2012 pricing period relate to Pi,2014 prices by merely aggregating those quantities under the previous pricing structure to align with the new price structure. It has not been necessary to estimate or make any assumptions in respect of the quantities that relate to the restructured prices.

2.4.4. The mapping of prices restructured between 2013 and 2014 is shown in Appendix 3.

3. QUALITY STANDARDS

3.1. Introduction

3.1.1. In this section Vector demonstrates that it has complied with the quality standards, *clause 9* of the Determination. Vector has provided information to support the statement of compliance including: relevant incident data and calculations, a description of the policies and procedures used for recording RTE statistics and a statement confirming Vector has not excluded any RTE values over the assessment period.

3.2. RTE results for the assessment period

3.2.1. Vector's RTE results for the assessment period are:

1. $\frac{RTE_{60}}{RTE_t} = \frac{204}{222} = 0.919$
2. $\frac{RTE_{180}}{(RTE_t - RTE_{excl})} = \frac{222}{(222 - 0)} = 1$

3.2.2. For the purposes of calculation the RTE values in paragraph 3.2.1 above:

- RTE_t is the total number of emergencies in the assessment period;
- RTE_{excl} is the total number of emergencies in the assessment period for which the Commission has granted an exclusion in writing;
- RTE_{60} is the total number of emergencies in the assessment period where the GDB's RTE was less than or equal to 60 minutes; and
- RTE_{180} is the total number of emergencies in the assessment period where the GDB's RTE was less than or equal to 180 minutes.

3.3. Exclusions

3.3.1. Vector can confirm that for this assessment period it did not have any emergencies that the Commission determined may be excluded from the RTE values, nor does Vector have any exclusion requests pending a decision by the Commission for the assessment period.

3.4. Policies and procedures for recording the RTE statistics

3.4.1. Vector employs contracted service providers to undertake data capture activities within the gas distribution network. The service providers manage data in accordance with Vector's requirements as defined in the Vector standard GNS-0081 (standard for Gas Distribution Network Reliability, Integrity and Consumer Service).

3.4.2. Gas distribution network performance and consumer service data is captured by the service providers using three methods:

1. Remotely, entered directly into Vector's Customer Management System (CMS).
2. Electronically via hand-held tablets in the field. Data from the hand-held tablets is automatically uploaded into Vector's CMS.
3. Hard copy (used only if the electronic data capture systems are not available), recorded on paper reports and subsequently entered into Vector's CMS with the paper reports scanned and entered as an attachment.

3.4.3. Data entered in Vector's CMS system by one of the above methods is then quality checked by the service provider for accuracy, prior to then undergoing additional quality assurance checks by Vector personnel.

3.4.4. RTE statistics are calculated (in line with the definition of RTE in the Determination) for each event and the data retained in the database for ongoing reporting and analysis.

3.4.5. RTE performance is monitored on a monthly basis. All RTE events taking longer than 60 minutes to respond to are investigated with the service providers.

3.4.6. Figure 1 below details the data collection, quality control / assurance and information development stages completed to generate the required information for disclosure.

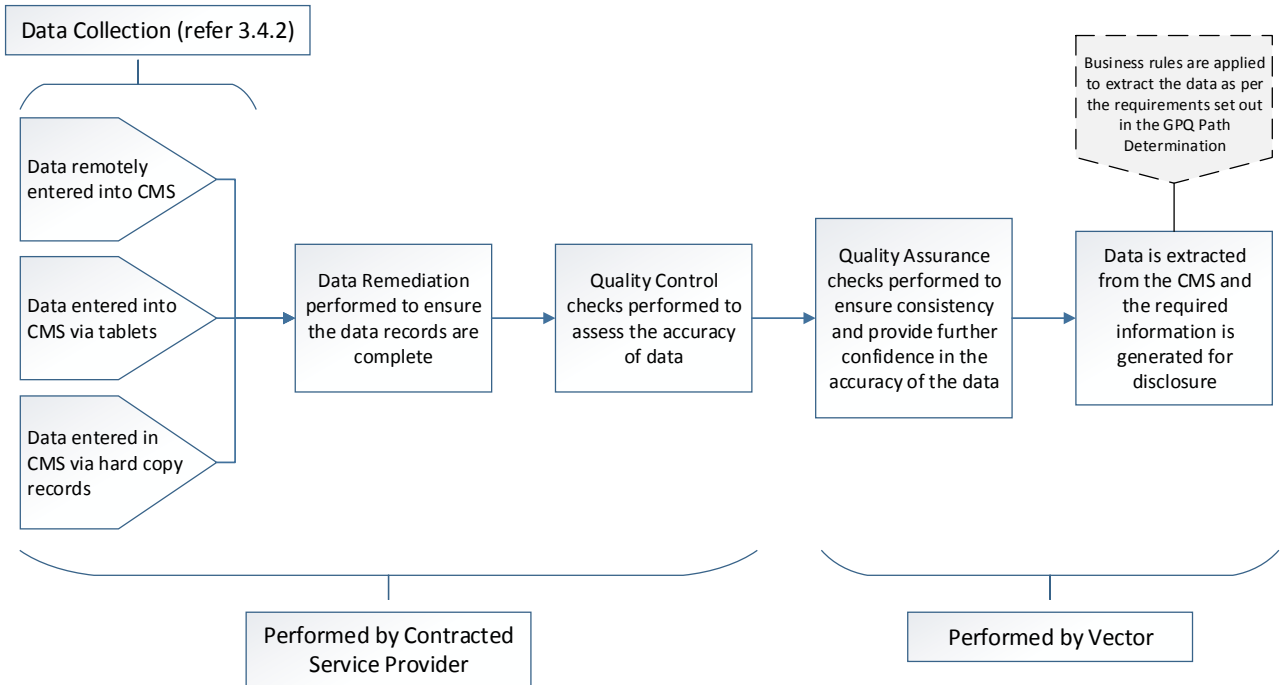


Figure 1 – Data collection and information development process

4. APPENDICES

Appendix 1: Consumer price index

Consumers price index

Tradables, non-tradables and all groups – index numbers and percentage changes⁽¹⁾⁽²⁾

Base: June 2006 quarter (=1000)

Series ref. CPIQ	Tradables ⁽³⁾⁽⁴⁾			Non-tradables ⁽⁵⁾			All groups ⁽³⁾		
	Index	Percentage change		Index	Percentage change		Index	Percentage change	
		From previous quarter	From same quarter of previous year		From previous quarter	From same quarter of previous year		From previous quarter	From same quarter of previous year
SE9NS6000				SE9NS6500			SE9A		
Quarter									
2006 Jun	1000	2.3	3.8	1000	1.0	4.1	1000	1.5	4.0
Sep	1003	0.3	3.0	1010	1.0	4.0	1007	0.7	3.5
Dec	990	-1.3	1.2	1018	0.8	3.8	1005	-0.2	2.6
2007 Mar	986	-0.4	0.9	1030	1.2	4.1	1010	0.5	2.5
Jun	995	0.9	-0.5	1041	1.1	4.1	1020	1.0	2.0
Sep	1000	0.5	-0.3	1047	0.6	3.7	1025	0.5	1.8
Dec	1018	1.8	2.8	1054	0.7	3.5	1037	1.2	3.2
2008 Mar	1020	0.2	3.4	1066	1.1	3.5	1044	0.7	3.4
Jun	1043	2.3	4.8	1076	0.9	3.4	1061	1.6	4.0
Sep	1063	1.9	6.3	1090	1.3	4.1	1077	1.5	5.1
Dec	1041	-2.1	2.3	1099	0.8	4.3	1072	-0.5	3.4
2009 Mar	1037	-0.4	1.7	1107	0.7	3.8	1075	0.3	3.0
Jun	1045	0.8	0.2	1112	0.5	3.3	1081	0.6	1.9
Sep	1062	1.6	-0.1	1123	1.0	3.0	1095	1.3	1.7
Dec	1057	-0.5	1.5	1124	0.1	2.3	1093	-0.2	2.0
2010 Mar	1058	0.1	2.0	1130	0.5	2.1	1097	0.4	2.0
Jun	1055	-0.3	1.0	1137	0.6	2.2	1099	0.2	1.7
Sep	1065	0.9	0.3	1151	1.2	2.5	1111	1.1	1.5
Dec	1092	2.5	3.3	1176	2.2	4.6	1137	2.3	4.0
2011 Mar	1097	0.5	3.7	1189	1.1	5.2	1146	0.8	4.5
Jun	1113	1.5	5.5	1196	0.6	5.2	1157	1.0	5.3
Sep	1114	0.1	4.6	1203	0.6	4.5	1162	0.4	4.6
Dec	1104	-0.9	1.1	1205	0.2	2.5	1158	-0.3	1.8
2012 Mar	1100	-0.4	0.3	1219	1.2	2.5	1164	0.5	1.6
Jun	1101	0.1	-1.1	1225	0.5	2.4	1168	0.3	1.0
Sep	1101	0.0	-1.2	1231	0.5	2.3	1171	0.3	0.8
Dec	1093	-0.7	-1.0	1235	0.3	2.5	1169	-0.2	0.9
2013 Mar	1088	-0.5	-1.1	1248	1.1	2.4	1174	0.4	0.9
Jun	1083	-0.5	-1.6	1256	0.6	2.5	1176	0.2	0.7
Sep	1096	1.2	-0.5	1265	0.7	2.8	1187	0.9	1.4
Dec	1090	-0.5	-0.3	1271	0.5	2.9	1188	0.1	1.6
2014 Mar	1082	-0.7	-0.6	1285	1.1	3.0	1192	0.3	1.5
Jun	1084	0.2	0.1	1290	0.4	2.7	1195	0.3	1.6

1. Percentage changes are calculated from index numbers that are not rounded until the June 2006 quarter.

2. Five decimal places are retained before the June 2006 quarter to preserve percentage changes that were originally published on earlier expression bases.

3. From the September 2006 quarter, prices for fresh fruit and vegetables are not seasonally adjusted. They were seasonally adjusted until the June 2006 quarter.

4. Tradables are goods and services that are imported or are in competition with foreign goods and services, either in domestic or foreign markets.

5. Non-tradables are goods and services that do not face foreign competition.

Source: Statistics New Zealand

$$\Delta CPI_{2014} = \frac{CPI_{Jun,2012} + CPI_{Sep,2012} + CPI_{Dec,2012} + CPI_{Mar,2013}}{CPI_{Jun,2011} + CPI_{Sep,2011} + CPI_{Dec,2011} + CPI_{Mar,2012}} - 1$$

$$\Delta CPI_{2014} = \frac{1168 + 1171 + 1169 + 1174}{1157 + 1162 + 1158 + 1164} - 1$$

$$\Delta CPI_{2014} = 0.0088$$

Appendix 2: Pass-through costs

Cost type	Organisation	Period paid	Period relates to ¹	Amount paid	Time Value of Money adjustment ²	Total amount
Rate	Auckland	Oct13-Jun14	PY2014	\$ 1,087,164	\$ -	\$ 1,087,164
Rate	Gisborne District Council	Jul13-Sept13	PY2013	\$ 2,406	\$ 129	\$ 2,536
Rate	Gisborne District Council	Oct13-Jun14	PY2014	\$ 7,219	\$ -	\$ 7,219
Rate	Hamilton City Council	Jul13-Sept13	PY2013	\$ 1,478	\$ 79	\$ 1,557
Rate	Hamilton City Council	Oct13-Jun14	PY2014	\$ 4,433	\$ -	\$ 4,433
Rate	Horowhenua District Council	Jul13-Sept13	PY2013	\$ 83	\$ 4	\$ 88
Rate	Horowhenua District Council	Oct13-Jun14	PY2014	\$ 250	\$ -	\$ 250
Rate	Kapiti Coast District Council	Jul 13-Sept 13	PY2013	\$ 3,987	\$ 214	\$ 4,201
Rate	Kapiti Coast District Council	Oct 13-Jun 14	PY2014	\$ 11,960	\$ -	\$ 11,960
Rate	Kawerau District Council	Jul13-Sept13	PY2013	\$ 3,492	\$ 188	\$ 3,680
Rate	Kawerau District Council	Oct13-Jun14	PY2014	\$ 10,475	\$ -	\$ 10,475
Rate	Matamata-Piako District Council	Jul13-Sept13	PY2013	\$ 959	\$ 52	\$ 1,011
Rate	Matamata-Piako District Council	Oct13-Jun14	PY2014	\$ 2,878	\$ -	\$ 2,878
Rate	Rotorua District Council	Jul13-Sept13	PY2013	\$ 18,162	\$ 977	\$ 19,139
Rate	Rotorua District Council	Oct13-Jun14	PY2014	\$ 54,486	\$ -	\$ 54,486
Rate	Waikato Regional Council	Jul13-Sept13	PY2013	\$ 5,478	\$ 295	\$ 5,772
Rate	Waikato Regional Council	Oct13-Jun14	PY2014	\$ 15,729	\$ -	\$ 15,729
Rate	Waipa District Council	Jul13-Sept13	PY2013	\$ 1,948	\$ 105	\$ 2,053
Rate	Waipa District Council	Oct13-Jun14	PY2014	\$ 5,844	\$ -	\$ 5,844
Rate	Whakatane District Council	Jul13-Sept13	PY2013	\$ 1,660	\$ 89	\$ 1,750
Rate	Whakatane District Council	Oct13-Jun14	PY2014	\$ 4,981	\$ -	\$ 4,981
Rate	Whangarei District Council	Jul13-Sept13	PY2013	\$ 143	\$ 8	\$ 150
Rate	Whangarei District Council	Oct13-Jun14	PY2014	\$ 423	\$ -	\$ 423
Levy	Commerce Commission	Jul13-Sept13	PY2013	\$ 31,928	\$ 1,718	\$ 33,646
Levy	Commerce Commission	Oct13-Jun14	PY2014	\$ 306,718	\$ -	\$ 306,718
Levy	Electricity and Gas Complaints Commission ³	Jul13-Sept13	PY2013	\$ 5,945	\$ 320	\$ 6,265
Levy	Electricity and Gas Complaints Commission ³	Jul13-Sept13	PY2014	\$ 29,153	\$ -	\$ 29,153
Total						\$ 1,623,577

Notes

1. PY2013 = pricing year 2013, PY2014 = pricing year 2014.
2. The time value of money adjustments have been calculated in accordance with Equation 4 in Schedule 5 of the DPP.
3. The EGCC levy is invoiced on annual basis from April to March and is paid in a single payment. The total levy has been apportioned to the relevant pricing period, that is, one quarter of the total levy applies to PY2013, and two quarters of the total levy applies to PY2014.

Appendix 3: Mapping of prices following restructure

2013 Pricing Plan	2014 Pricing Plan
GN0R	GN0R
GN01	GN01
GNS2	GN02
GNT2	
GNS3	GN03
GNT3	
GNS4	GN04
GNT4	
GA0R	GA0R
GA01	GA01
GA02	GA02
GA12	
GAS3	GA03
GAT3	
GAS4	GA04
GAT4	

Appendix 4: Summary of $P_{i,2014}Q_{i,2012}$ for the 2014 assessment period

	$P_{i,2014}Q_{i,2012}$
Sum	\$ 66,726,531

	$P_{i,2014}Q_{i,2012}$
Auckland published charges between 1 October 2013 to 30 September 2014	\$ 36,534,978
North Island published charges between 1 October 2013 to 30 September 2014	\$ 21,016,591
Auckland published charges between 1 October 2013 to 30 September 2014 - Scaling	-\$ 731,539
Auckland non-standard charges between 1 October 2013 to 30 September 2014	\$ 6,145,340
North Island non-standard charges between 1 October 2013 to 30 September 2014	\$ 3,761,161

Appendix 5: Auckland published charges from 1 October 2013

				<i>P_{1,2014} Q_{1,2012}</i>	
Sum				\$	36,534,978

Residential

Price plan	Code	Description	Units	<i>P_{1,2014}</i>	<i>Q_{1,2012}</i>	<i>P_{1,2014} Q_{1,2012}</i>
GA0R	GA0R-FIXD	Fixed	\$/day	\$ 0.3000	31,174,480	\$ 9,352,344
GA0R	GA0R-24UC	Variable	\$/kWh	\$ 0.0235	626,938,772	\$ 14,733,061

Business

Price plan	Code	Description	Units	<i>P_{1,2014}</i>	<i>Q_{1,2012}</i>	<i>P_{1,2014} Q_{1,2012}</i>
GA01	GA01-FIXD	Fixed	\$/day	\$ 0.5000	811,716	\$ 405,858
GA01	GA01-24UC	Variable	\$/kWh	\$ 0.0155	56,328,407	\$ 873,090

Commercial

Price plan	Code	Description	Units	<i>P_{1,2014}</i>	<i>Q_{1,2012}</i>	<i>P_{1,2014} Q_{1,2012}</i>
GA02	GA02-FIXD	Fixed	\$/day	\$ 0.9000	873,176	\$ 785,858
GA02	GA02-24UC	Variable	\$/kWh	\$ 0.0120	219,004,808	\$ 2,628,058
GA03	GA03-FIXD	Fixed	\$/day	\$ 3.9000	303,086	\$ 1,182,035
GA03	GA03-24UC	Variable	\$/kWh	\$ 0.0092	455,049,286	\$ 4,186,453

Industrial

Price plan	Code	Description	Units	<i>P_{1,2014}</i>	<i>Q_{1,2012}</i>	<i>P_{1,2014} Q_{1,2012}</i>
GA04	GA04-FIXD	Fixed	\$/day	\$ 12.0000	40,867	\$ 490,404
GA04	GA04-24UC	Variable	\$/kWh	\$ 0.0061	311,117,364	\$ 1,897,816

Appendix 6: North Island published charges from 1 October 2013

					<i>P_{1,2014} Q_{1,2012}</i>	
Sum					\$ 21,016,591	
Residential						
Price plan	Code	Description	Units	<i>P_{1,2014}</i>	<i>Q_{1,2012}</i>	<i>P_{1,2014} Q_{1,2012}</i>
GN0R	GN0R-FIXD	Fixed	\$/day	\$ 0.3000	21,692,885	\$ 6,507,866
GN0R	GN0R-24UC	Variable	\$/kWh	\$ 0.0235	373,696,120	\$ 8,781,859
Business						
Price plan	Code	Description	Units	<i>P_{1,2014}</i>	<i>Q_{1,2012}</i>	<i>P_{1,2014} Q_{1,2012}</i>
GN01	GN01-FIXD	Fixed	\$/day	\$ 0.5000	771,720	\$ 385,860
GN01	GN01-24UC	Variable	\$/kWh	\$ 0.0155	45,429,614	\$ 704,159
Commercial						
Price plan	Code	Description	Units	<i>P_{1,2014}</i>	<i>Q_{1,2012}</i>	<i>P_{1,2014} Q_{1,2012}</i>
GN02	GN02-FIXD	Fixed	\$/day	\$ 0.9000	469,773	\$ 422,796
GN02	GN02-24UC	Variable	\$/kWh	\$ 0.0120	108,115,331	\$ 1,297,384
GN03	GN03-FIXD	Fixed	\$/day	\$ 3.9000	179,224	\$ 698,974
GN03	GN03-24UC	Variable	\$/kWh	\$ 0.0092	183,330,162	\$ 1,686,637
Industrial						
Price plan	Code	Description	Units	<i>P_{1,2014}</i>	<i>Q_{1,2012}</i>	<i>P_{1,2014} Q_{1,2012}</i>
GN04	GN04-FIXD	Fixed	\$/day	\$ 12.0000	13,281	\$ 159,372
GN04	GN04-24UC	Variable	\$/kWh	\$ 0.0061	60,931,997	\$ 371,685

Appendix 7: Auckland network – 2014 scaling

	<i>P_{i,2014} Q_{i,2012}</i>
Sum	-\$ 731,539

Price plan	Code	Description	Units	<i>P_{i,2014}</i>	<i>Q_{i,2012}</i>	<i>P_{i,2014} Q_{i,2012}</i>
GA0R	GA0R-24UC	Variable	\$/kWh	\$ 0.0235	- 23,309,079	-\$ 547,763
GA01	GA01-24UC	Variable	\$/kWh	\$ 0.0155	- 1,303,659	-\$ 20,207
GA02	GA02-24UC	Variable	\$/kWh	\$ 0.0120	- 4,596,174	-\$ 55,154
GA03	GA03-24UC	Variable	\$/kWh	\$ 0.0092	- 9,140,874	-\$ 84,096
GA04	GA04-24UC	Variable	\$/kWh	\$ 0.0061	- 3,986,723	-\$ 24,319

Appendix 8: Auckland non-standard charges from 1 October 2013

			<i>P_{i,2014}Q_{i,2012}</i>		
Sum			\$6,145,340		
Price plan	Description	Units	<i>P_{i,2014}</i>	<i>Q_{i,2012}</i>	<i>P_{i,2014}Q_{i,2012}</i>
VNS14088	Fixed	\$/day	\$12.0000	366	\$4,392
VNS14089	Fixed	\$/day	\$3.9000	366	\$1,427
VNS14090	Fixed	\$/day	\$3.9000	366	\$1,427
VNS14091	Fixed	\$/day	\$3.9000	366	\$1,427
VNS14092	Fixed	\$/day	\$12.0000	366	\$4,392
VNS14093	Fixed	\$/day	\$12.0000	366	\$4,392
VNS14094	Fixed	\$/day	\$12.0000	366	\$4,392
VNS14095	Fixed	\$/day	\$3.9000	366	\$1,427
VNS14096	Fixed	\$/day	\$3.9000	366	\$1,427
VNS14097	Fixed	\$/day	\$3.9000	366	\$1,427
VNS14098	Fixed	\$/day	\$3.9000	366	\$1,427
VNS14099	Fixed	\$/day	\$12.0000	366	\$4,392
VNS14100	Fixed	\$/day	\$3.9000	366	\$1,427
VNS14101	Fixed	\$/day	\$12.0000	366	\$4,392
VNS14102	Fixed	\$/day	\$12.0000	366	\$4,392
VNS14103	Fixed	\$/day	\$3.9000	366	\$1,427
VNS14104	Fixed	\$/day	\$3.9000	366	\$1,427
VNS14105	Fixed	\$/day	\$12.0000	366	\$4,392
VNS14106	Fixed	\$/day	\$3.9000	366	\$1,427
VNS14107	Fixed	\$/day	\$3.9000	366	\$1,427
VNS14108	Fixed	\$/day	\$12.0000	366	\$4,392
VNS14109	Fixed	\$/day	\$12.0000	366	\$4,392
VNS14110	Fixed	\$/day	\$12.0000	366	\$4,392
VNS14111	Fixed	\$/day	\$12.0000	366	\$4,392
VNS14112	Fixed	\$/day	\$12.0000	366	\$4,392
VNS14113	Fixed	\$/day	\$12.0000	366	\$4,392
VNS14114	Fixed	\$/day	\$12.0000	366	\$4,392
VNS14115	Fixed	\$/day	\$3.9000	366	\$1,427
VNS14116	Fixed	\$/day	\$3.9000	366	\$1,427
VNS14117	Fixed	\$/day	\$3.9000	366	\$1,427
VNS14118	Fixed	\$/day	\$12.0000	366	\$4,392
VNS14119	Fixed	\$/day	\$3.9000	366	\$1,427
VNS14120	Fixed	\$/day	\$12.0000	366	\$4,392
VNS14121	Fixed	\$/day	\$12.0000	366	\$4,392
VNS14122	Fixed	\$/day	\$12.0000	366	\$4,392
VNS14123	Fixed	\$/day	\$3.9000	366	\$1,427
VNS14124	Fixed	\$/day	\$3.9000	366	\$1,427
VNS14125	Fixed	\$/day	\$12.0000	366	\$4,392
VNS14126	Fixed	\$/day	\$187.1900	366	\$68,512
VNS14127	Fixed	\$/day	\$12.0000	366	\$4,392
VNS14128	Fixed	\$/day	\$117.2400	366	\$42,910
VNS14129	Fixed	\$/day	\$607.7600	366	\$222,440
VNS14130	Fixed	\$/day	\$82.4200	366	\$30,166
VNS14131	Fixed	\$/day	\$70.2800	366	\$25,722
VNS14132	Fixed	\$/day	\$12.0000	366	\$4,392

Price plan	Description	Units	$P_{i,2014}$	$Q_{i,2012}$	$P_{i,2014}Q_{i,2012}$
VNS14133	Fixed	\$/day	\$59.3100	366	\$21,707
VNS14134	Fixed	\$/day	\$75.4300	366	\$27,607
VNS14135	Fixed	\$/day	\$ -	140	\$ -
VNS14136	Fixed	\$/day	\$97.2300	366	\$35,586
VNS14137	Fixed	\$/day	\$480.9700	366	\$176,035
VNS14138	Fixed	\$/day	\$ -	366	\$ -
VNS14139	Fixed	\$/day	\$112.4200	366	\$41,146
VNS14140	Fixed	\$/day	\$166.8900	366	\$61,082
VNS14141	Fixed	\$/day	\$218.2900	366	\$79,894
VNS14142	Fixed	\$/day	\$34.1200	366	\$12,488
VNS14143	Fixed	\$/day	\$33.3400	366	\$12,202
VNS14144	Fixed	\$/day	\$44.4100	366	\$16,254
VNS14145	Fixed	\$/day	\$193.7200	366	\$70,902
VNS14146	Fixed	\$/day	\$21.9200	366	\$8,023
VNS14147	Fixed	\$/day	\$12.0000	366	\$4,392
VNS14148	Fixed	\$/day	\$3.9000	366	\$1,427
VNS14149	Fixed	\$/day	\$135.6700	366	\$49,655
VNS14150	Fixed	\$/day	\$39.6200	366	\$14,501
VNS14151	Fixed	\$/day	\$12.0000	366	\$4,392
VNS14152	Fixed	\$/day	\$12.0000	366	\$4,392
VNS14153	Fixed	\$/day	\$12.0000	366	\$4,392
VNS14154	Fixed	\$/day	\$114.1400	366	\$41,775
VNS14155	Fixed	\$/day	\$668.0300	366	\$244,499
VNS14156	Fixed	\$/day	\$3.9000	366	\$1,427
VNS14157	Fixed	\$/day	\$72.2000	49	\$3,538
VNS14158	Fixed	\$/day	\$428.9800	366	\$157,007
VNS14159	Fixed	\$/day	\$12.0000	366	\$4,392
VNS14160	Fixed	\$/day	\$ -	-	\$ -
VNS14161	Fixed	\$/day	\$12.0000	366	\$4,392
VNS14162	Fixed	\$/day	\$ -	-	\$ -
VNS14163	Fixed	\$/day	\$141.2800	366	\$51,708
VNS14164	Fixed	\$/day	\$12.0000	366	\$4,392
VNS14165	Fixed	\$/day	\$12.0000	366	\$4,392
VNS14166	Fixed	\$/day	\$100.4100	366	\$36,750
VNS14167	Fixed	\$/day	\$1,969.3500	366	\$720,782
VNS14168	Fixed	\$/day	\$91.6700	366	\$33,551
VNS14169	Fixed	\$/day	\$12.0000	366	\$4,392
VNS14170	Fixed	\$/day	\$12.0000	366	\$4,392
VNS14171	Fixed	\$/day	\$32.7000	366	\$11,968
VNS14172	Fixed	\$/day	\$12.0000	366	\$4,392
VNS14173	Fixed	\$/day	\$0.9000	366	\$329
VNS14174	Fixed	\$/day	\$132.9700	366	\$48,667
VNS14175	Fixed	\$/day	\$3.9000	366	\$1,427
VNS14176	Fixed	\$/day	\$48.4900	366	\$17,747
VNS14177	Fixed	\$/day	\$65.6000	366	\$24,010
VNS14178	Fixed	\$/day	\$35.4300	366	\$12,967
VNS14179	Fixed	\$/day	\$235.2400	366	\$86,098
VNS14180	Fixed	\$/day	\$121.2000	366	\$44,359
VNS14181	Fixed	\$/day	\$118.6000	366	\$43,408
VNS14182	Fixed	\$/day	\$100.4100	366	\$36,750

Price plan	Description	Units	$P_{i,2014}$	$Q_{i,2012}$	$P_{i,2014}Q_{i,2012}$
VNS14183	Fixed	\$/day	\$22.8600	366	\$8,367
VNS14184	Fixed	\$/day	\$100.4100	366	\$36,750
VNS14185	Fixed	\$/day	\$ -	366	\$ -
VNS14186	Fixed	\$/day	\$12.0000	366	\$4,392
VNS14187	Fixed	\$/day	\$ -	-	\$ -
VNS14188	Fixed	\$/day	\$12.0000	366	\$4,392
VNS14189	Fixed	\$/day	\$100.4100	366	\$36,750
VNS14190	Fixed	\$/day	\$12.0000	366	\$4,392
VNS14191	Fixed	\$/day	\$184.2700	366	\$67,443
VNS14192	Fixed	\$/day	\$229.1200	366	\$83,858
VNS14193	Fixed	\$/day	\$10.9700	366	\$4,015
VNS14194	Fixed	\$/day	\$0.9000	366	\$329
VNS14195	Fixed	\$/day	\$159.9900	366	\$58,556
VNS14196	Fixed	\$/day	\$12.0000	366	\$4,392
VNS14197	Fixed	\$/day	\$326.1400	366	\$119,367
VNS14198	Fixed	\$/day	\$58.3000	366	\$21,338
VNS14199	Fixed	\$/day	\$12.0000	366	\$4,392
VNS14200	Fixed	\$/day	\$319.7700	-	\$ -
VNS14201	Fixed	\$/day	\$480.9700	-	\$ -

Price plan	Description	Units	$P_{i,2014}$	$Q_{i,2012}$	$P_{i,2014}Q_{i,2012}$
VNS14088	Variable	\$/kWh	\$0.0061	2,180,379	\$13,300
VNS14089	Variable	\$/kWh	\$0.0092	933,164	\$8,585
VNS14090	Variable	\$/kWh	\$0.0092	1,751,220	\$16,111
VNS14091	Variable	\$/kWh	\$0.0092	729,173	\$6,708
VNS14092	Variable	\$/kWh	\$0.0061	1,725,831	\$10,528
VNS14093	Variable	\$/kWh	\$0.0061	12,615,643	\$76,955
VNS14094	Variable	\$/kWh	\$0.0061	11,963,436	\$72,977
VNS14095	Variable	\$/kWh	\$0.0092	649,069	\$5,971
VNS14096	Variable	\$/kWh	\$0.0092	1,519,392	\$13,978
VNS14097	Variable	\$/kWh	\$0.0092	1,532,921	\$14,103
VNS14098	Variable	\$/kWh	\$0.0092	1,680,376	\$15,459
VNS14099	Variable	\$/kWh	\$0.0061	3,227,030	\$19,685
VNS14100	Variable	\$/kWh	\$0.0092	147,803	\$1,360
VNS14101	Variable	\$/kWh	\$0.0061	3,508,105	\$21,399
VNS14102	Variable	\$/kWh	\$0.0061	1,608,570	\$9,812
VNS14103	Variable	\$/kWh	\$0.0092	11,590,700	\$106,634
VNS14104	Variable	\$/kWh	\$0.0092	1,209,092	\$11,124
VNS14105	Variable	\$/kWh	\$0.0061	7,939,921	\$48,434
VNS14106	Variable	\$/kWh	\$0.0092	868,066	\$7,986
VNS14107	Variable	\$/kWh	\$0.0092	972,487	\$8,947
VNS14108	Variable	\$/kWh	\$0.0061	1,279,631	\$7,806
VNS14109	Variable	\$/kWh	\$0.0061	18,852,459	\$115,000
VNS14110	Variable	\$/kWh	\$0.0061	26,073,222	\$159,047
VNS14111	Variable	\$/kWh	\$0.0061	5,426,403	\$33,101
VNS14112	Variable	\$/kWh	\$0.0061	3,231,701	\$19,713
VNS14113	Variable	\$/kWh	\$0.0061	804,016	\$4,904
VNS14114	Variable	\$/kWh	\$0.0061	3,849,124	\$23,480
VNS14115	Variable	\$/kWh	\$0.0092	3,283,860	\$30,212

Price plan	Description	Units	$P_{i,2014}$	$Q_{i,2012}$	$P_{i,2014}Q_{i,2012}$
VNS14116	Variable	\$/kWh	\$0.0092	622,585	\$5,728
VNS14117	Variable	\$/kWh	\$0.0092	1,220,188	\$11,226
VNS14118	Variable	\$/kWh	\$0.0061	605,554	\$3,694
VNS14119	Variable	\$/kWh	\$0.0092	501,579	\$4,615
VNS14120	Variable	\$/kWh	\$0.0061	3,953,614	\$24,117
VNS14121	Variable	\$/kWh	\$0.0061	2,381,656	\$14,528
VNS14122	Variable	\$/kWh	\$0.0061	584,513	\$3,566
VNS14123	Variable	\$/kWh	\$0.0092	3,309,631	\$30,449
VNS14124	Variable	\$/kWh	\$0.0092	4,886,384	\$44,955
VNS14125	Variable	\$/kWh	\$0.0061	3,179,135	\$19,393
VNS14126	Variable	\$/kWh	\$0.0007	25,044,545	\$17,531
VNS14127	Variable	\$/kWh	\$0.0061	7,002,331	\$42,714
VNS14128	Variable	\$/kWh	\$0.0004	26,067,550	\$10,427
VNS14129	Variable	\$/kWh	\$0.0002	324,270,300	\$64,854
VNS14130	Variable	\$/kWh	\$0.0009	8,219,938	\$7,398
VNS14131	Variable	\$/kWh	\$0.0006	9,929,661	\$5,958
VNS14132	Variable	\$/kWh	\$0.0061	9,769,712	\$59,595
VNS14133	Variable	\$/kWh	\$-	4,558,329	\$-
VNS14134	Variable	\$/kWh	\$-	6,686,858	\$-
VNS14135	Variable	\$/kWh	\$-	-	\$-
VNS14136	Variable	\$/kWh	\$0.0009	9,269,425	\$8,342
VNS14137	Variable	\$/kWh	\$0.0004	109,774,020	\$43,910
VNS14138	Variable	\$/kWh	\$-	1,371,820	\$-
VNS14139	Variable	\$/kWh	\$0.0032	35,573,796	\$114,832
VNS14140	Variable	\$/kWh	\$0.0009	16,068,252	\$14,461
VNS14141	Variable	\$/kWh	\$0.0009	23,645,167	\$21,281
VNS14142	Variable	\$/kWh	\$-	1,885,856	\$-
VNS14143	Variable	\$/kWh	\$0.0008	2,795,520	\$2,236
VNS14144	Variable	\$/kWh	\$0.0008	4,716,284	\$3,773
VNS14145	Variable	\$/kWh	\$0.0005	37,994,443	\$18,997
VNS14146	Variable	\$/kWh	\$0.0004	3,210,547	\$1,284
VNS14147	Variable	\$/kWh	\$0.0061	35,379,544	\$215,815
VNS14148	Variable	\$/kWh	\$0.0092	2,878,103	\$26,479
VNS14149	Variable	\$/kWh	\$0.0004	32,330,696	\$12,932
VNS14150	Variable	\$/kWh	\$0.0007	4,747,367	\$3,323
VNS14151	Variable	\$/kWh	\$0.0061	1,389,568	\$8,476
VNS14152	Variable	\$/kWh	\$0.0061	9,475,070	\$57,798
VNS14153	Variable	\$/kWh	\$0.0061	12,376,971	\$75,500
VNS14154	Variable	\$/kWh	\$0.0010	10,307,076	\$10,307
VNS14155	Variable	\$/kWh	\$0.0011	58,692,837	\$64,562
VNS14156	Variable	\$/kWh	\$0.0092	4,517,978	\$41,565
VNS14157	Variable	\$/kWh	\$0.0011	928,054	\$1,021
VNS14158	Variable	\$/kWh	\$0.0004	86,195,848	\$34,478
VNS14159	Variable	\$/kWh	\$0.0061	3,952,304	\$24,109
VNS14160	Variable	\$/kWh	\$-	-	\$-
VNS14161	Variable	\$/kWh	\$0.0061	3,534,816	\$21,562
VNS14162	Variable	\$/kWh	\$-	-	\$-
VNS14163	Variable	\$/kWh	\$0.0005	28,485,639	\$14,243
VNS14164	Variable	\$/kWh	\$0.0061	7,041,431	\$42,953
VNS14165	Variable	\$/kWh	\$0.0061	2,506,827	\$15,292

Price plan	Description	Units	$P_{i,2014}$	$Q_{i,2012}$	$P_{i,2014}Q_{i,2012}$
VNS14166	Variable	\$/kWh	\$0.0009	91,910	\$86
VNS14167	Variable	\$/kWh	\$-	136,921,697	\$-
VNS14168	Variable	\$/kWh	\$0.0011	7,677,353	\$8,445
VNS14169	Variable	\$/kWh	\$0.0061	14,734,233	\$89,879
VNS14170	Variable	\$/kWh	\$0.0061	10,653,437	\$64,986
VNS14171	Variable	\$/kWh	\$0.0009	3,439,117	\$3,095
VNS14172	Variable	\$/kWh	\$0.0061	5,480,961	\$33,434
VNS14173	Variable	\$/kWh	\$0.0120	-	\$-
VNS14174	Variable	\$/kWh	\$0.0006	20,880,214	\$12,528
VNS14175	Variable	\$/kWh	\$0.0092	288,059	\$2,650
VNS14176	Variable	\$/kWh	\$0.0012	3,775,170	\$4,530
VNS14177	Variable	\$/kWh	\$0.0009	6,267,469	\$5,641
VNS14178	Variable	\$/kWh	\$0.0008	3,776,324	\$3,021
VNS14179	Variable	\$/kWh	\$0.0010	21,382,944	\$21,383
VNS14180	Variable	\$/kWh	\$0.0006	19,040,959	\$11,425
VNS14181	Variable	\$/kWh	\$0.0009	11,365,636	\$10,229
VNS14182	Variable	\$/kWh	\$0.0009	38,716,238	\$36,393
VNS14183	Variable	\$/kWh	\$0.0007	2,919,325	\$2,044
VNS14184	Variable	\$/kWh	\$0.0009	14,726,871	\$13,843
VNS14185	Variable	\$/kWh	\$-	-	\$-
VNS14186	Variable	\$/kWh	\$0.0061	18,556,323	\$113,194
VNS14187	Variable	\$/kWh	\$-	-	\$-
VNS14188	Variable	\$/kWh	\$0.0061	5,894,672	\$35,957
VNS14189	Variable	\$/kWh	\$0.0009	26,566,040	\$24,972
VNS14190	Variable	\$/kWh	\$0.0061	4,620,271	\$28,184
VNS14191	Variable	\$/kWh	\$0.0008	24,008,386	\$19,207
VNS14192	Variable	\$/kWh	\$0.0007	33,430,688	\$23,401
VNS14193	Variable	\$/kWh	\$0.0021	484,755	\$1,018
VNS14194	Variable	\$/kWh	\$0.0120	684,870	\$8,218
VNS14195	Variable	\$/kWh	\$0.0009	16,870,632	\$15,184
VNS14196	Variable	\$/kWh	\$0.0061	3,803,427	\$23,201
VNS14197	Variable	\$/kWh	\$-	29,418,227	\$-
VNS14198	Variable	\$/kWh	\$0.0007	7,873,131	\$5,511
VNS14199	Variable	\$/kWh	\$0.0061	12,356,494	\$75,375
VNS14200	Variable	\$/kWh	\$0.0006	47,192,014	\$28,315
VNS14201	Variable	\$/kWh	\$0.0004	-	\$-

Appendix 9: North Island non-standard charges from 1 October 2013

	<i>P_{i,2014}Q_{i,2012}</i>
Sum	\$3,761,161

Price plan	Description	Units	<i>P_{i,2014}</i>	<i>Q_{i,2012}</i>	<i>P_{i,2014}Q_{i,2012}</i>
VNS14001	Fixed	\$/day	\$3.9000	366	\$1,427
VNS14002	Fixed	\$/day	\$12.0000	366	\$4,392
VNS14003	Fixed	\$/day	\$3.9000	366	\$1,427
VNS14004	Fixed	\$/day	\$12.0000	366	\$4,392
VNS14005	Fixed	\$/day	\$12.0000	366	\$4,392
VNS14006	Fixed	\$/day	\$12.0000	366	\$4,392
VNS14007	Fixed	\$/day	\$12.0000	366	\$4,392
VNS14008	Fixed	\$/day	\$ -	-	\$ -
VNS14009	Fixed	\$/day	\$344.9600	366	\$126,255
VNS14010	Fixed	\$/day	\$303.9300	366	\$111,238
VNS14011	Fixed	\$/day	\$12.0000	366	\$4,392
VNS14012	Fixed	\$/day	\$ -	-	\$ -
VNS14013	Fixed	\$/day	\$12.0000	366	\$4,392
VNS14014	Fixed	\$/day	\$12.0000	366	\$4,392
VNS14015	Fixed	\$/day	\$12.0000	366	\$4,392
VNS14016	Fixed	\$/day	\$3.9000	366	\$1,427
VNS14017	Fixed	\$/day	\$112.0800	366	\$41,021
VNS14018	Fixed	\$/day	\$3.9000	366	\$1,427
VNS14019	Fixed	\$/day	\$12.0000	366	\$4,392
VNS14020	Fixed	\$/day	\$12.0000	366	\$4,392
VNS14021	Fixed	\$/day	\$12.0000	366	\$4,392
VNS14022	Fixed	\$/day	\$12.0000	366	\$4,392
VNS14023	Fixed	\$/day	\$239.3000	92	\$22,016
VNS14024	Fixed	\$/day	\$12.0000	366	\$4,392
VNS14025	Fixed	\$/day	\$299.7200	366	\$109,698
VNS14026	Fixed	\$/day	\$12.0000	366	\$4,392
VNS14027	Fixed	\$/day	\$3.9000	366	\$1,427
VNS14028	Fixed	\$/day	\$12.0000	366	\$4,392
VNS14029	Fixed	\$/day	\$48.4000	366	\$17,714
VNS14030	Fixed	\$/day	\$79.8600	366	\$29,229
VNS14031	Fixed	\$/day	\$23.6600	366	\$8,660
VNS14032	Fixed	\$/day	\$150.6000	366	\$55,120
VNS14033	Fixed	\$/day	\$144.4200	366	\$52,858
VNS14034	Fixed	\$/day	\$12.0000	366	\$4,392
VNS14035	Fixed	\$/day	\$285.5400	366	\$104,508
VNS14036	Fixed	\$/day	\$308.1300	366	\$112,776
VNS14037	Fixed	\$/day	\$12.0000	366	\$4,392
VNS14038	Fixed	\$/day	\$12.0000	366	\$4,392
VNS14039	Fixed	\$/day	\$12.0000	366	\$4,392
VNS14040	Fixed	\$/day	\$3.9000	366	\$1,427
VNS14041	Fixed	\$/day	\$12.0000	366	\$4,392
VNS14042	Fixed	\$/day	\$100.4600	366	\$36,768
VNS14043	Fixed	\$/day	\$45.2800	366	\$16,572
VNS14044	Fixed	\$/day	\$12.0000	366	\$4,392
VNS14045	Fixed	\$/day	\$61.0700	366	\$22,352

Price plan	Description	Units	$P_{i,2014}$	$Q_{i,2012}$	$P_{i,2014}Q_{i,2012}$
VNS14046	Fixed	\$/day	\$3.9000	366	\$1,427
VNS14047	Fixed	\$/day	\$3.9000	366	\$1,427
VNS14048	Fixed	\$/day	\$42.7000	366	\$15,628
VNS14049	Fixed	\$/day	\$12.0000	366	\$4,392
VNS14050	Fixed	\$/day	\$3.9000	366	\$1,427
VNS14051	Fixed	\$/day	\$194.8100	366	\$71,300
VNS14052	Fixed	\$/day	\$3.9000	366	\$1,427
VNS14053	Fixed	\$/day	\$ -	366	\$ -
VNS14054	Fixed	\$/day	\$3.9000	366	\$1,427
VNS14055	Fixed	\$/day	\$12.0000	366	\$4,392
VNS14056	Fixed	\$/day	\$227.4800	366	\$83,258
VNS14057	Fixed	\$/day	\$3.9000	366	\$1,427
VNS14058	Fixed	\$/day	\$344.8500	366	\$126,215
VNS14059	Fixed	\$/day	\$12.0000	366	\$4,392
VNS14060	Fixed	\$/day	\$ -	-	\$ -
VNS14061	Fixed	\$/day	\$12.0000	366	\$4,392
VNS14062	Fixed	\$/day	\$60.1600	366	\$22,019
VNS14063	Fixed	\$/day	\$3.9000	366	\$1,427
VNS14064	Fixed	\$/day	\$31.7950	366	\$11,637
VNS14065	Fixed	\$/day	\$101.0100	366	\$36,970
VNS14066	Fixed	\$/day	\$12.0000	366	\$4,392
VNS14067	Fixed	\$/day	\$12.0000	366	\$4,392
VNS14068	Fixed	\$/day	\$12.0000	366	\$4,392
VNS14069	Fixed	\$/day	\$12.0000	366	\$4,392
VNS14070	Fixed	\$/day	\$3.9000	366	\$1,427
VNS14071	Fixed	\$/day	\$3.9000	366	\$1,427
VNS14072	Fixed	\$/day	\$3.9000	366	\$1,427
VNS14073	Fixed	\$/day	\$12.0000	366	\$4,392
VNS14074	Fixed	\$/day	\$3.9000	366	\$1,427
VNS14075	Fixed	\$/day	\$12.0000	366	\$4,392
VNS14076	Fixed	\$/day	\$155.2900	366	\$56,836
VNS14077	Fixed	\$/day	\$3.9000	366	\$1,427
VNS14078	Fixed	\$/day	\$3.9000	366	\$1,427
VNS14079	Fixed	\$/day	\$12.0000	366	\$4,392
VNS14080	Fixed	\$/day	\$92.4300	366	\$33,829
VNS14081	Fixed	\$/day	\$ -	366	\$ -
VNS14082	Fixed	\$/day	\$ -	366	\$ -
VNS14083	Fixed	\$/day	\$ -	366	\$ -
VNS14084	Fixed	\$/day	\$ -	366	\$ -
VNS14085	Fixed	\$/day	\$ -	366	\$ -
VNS14086	Fixed	\$/day	\$12.0000	274	\$3,288
VNS14087	Fixed	\$/day	\$25.5000	-	\$ -

Price plan	Description	Units	$P_{i,2014}$	$Q_{i,2012}$	$P_{i,2014}Q_{i,2012}$
VNS14001	Variable	\$/kWh	\$0.0092	2,807,322	\$25,827
VNS14002	Variable	\$/kWh	\$0.0061	4,170,881	\$25,442
VNS14003	Variable	\$/kWh	\$0.0092	3,170,665	\$29,170
VNS14004	Variable	\$/kWh	\$0.0061	1,857,931	\$11,333
VNS14005	Variable	\$/kWh	\$0.0061	3,880,850	\$23,673
VNS14006	Variable	\$/kWh	\$0.0061	6,674,506	\$40,714
VNS14007	Variable	\$/kWh	\$0.0061	2,166,803	\$13,217
VNS14008	Variable	\$/kWh	\$ -	-	\$ -
VNS14009	Variable	\$/kWh	\$ -	39,599,744	\$ -
VNS14010	Variable	\$/kWh	\$ -	44,074,165	\$ -
VNS14011	Variable	\$/kWh	\$0.0061	3,763,761	\$22,959
VNS14012	Variable	\$/kWh	\$ -	-	\$ -
VNS14013	Variable	\$/kWh	\$0.0061	22,843,798	\$139,347
VNS14014	Variable	\$/kWh	\$0.0061	1,564,877	\$9,546
VNS14015	Variable	\$/kWh	\$0.0061	5,133,841	\$31,316
VNS14016	Variable	\$/kWh	\$0.0092	4,154,283	\$38,219
VNS14017	Variable	\$/kWh	\$0.0007	13,124,267	\$9,187
VNS14018	Variable	\$/kWh	\$0.0092	3,405,427	\$31,330
VNS14019	Variable	\$/kWh	\$0.0061	4,812,427	\$29,356
VNS14020	Variable	\$/kWh	\$0.0061	10,830,394	\$66,065
VNS14021	Variable	\$/kWh	\$0.0061	7,785,631	\$47,492
VNS14022	Variable	\$/kWh	\$0.0061	4,402,971	\$26,858
VNS14023	Variable	\$/kWh	\$0.0011	5,266,927	\$5,794
VNS14024	Variable	\$/kWh	\$0.0061	6,387,966	\$38,967
VNS14025	Variable	\$/kWh	\$ -	19,827,162	\$ -
VNS14026	Variable	\$/kWh	\$0.0061	5,085,189	\$31,020
VNS14027	Variable	\$/kWh	\$0.0092	4,374,364	\$40,244
VNS14028	Variable	\$/kWh	\$0.0061	5,673,306	\$34,607
VNS14029	Variable	\$/kWh	\$ -	125,945,285	\$ -
VNS14030	Variable	\$/kWh	\$ -	110,643,136	\$ -
VNS14031	Variable	\$/kWh	\$ -	56,638,429	\$ -
VNS14032	Variable	\$/kWh	\$ -	57,807,714	\$ -
VNS14033	Variable	\$/kWh	\$ -	163,428,227	\$ -
VNS14034	Variable	\$/kWh	\$0.0061	5,572,917	\$33,995
VNS14035	Variable	\$/kWh	\$ -	45,109,619	\$ -
VNS14036	Variable	\$/kWh	\$ -	38,862,399	\$ -
VNS14037	Variable	\$/kWh	\$0.0061	5,670,290	\$34,589
VNS14038	Variable	\$/kWh	\$0.0061	4,979,745	\$30,376
VNS14039	Variable	\$/kWh	\$0.0061	3,775,713	\$23,032
VNS14040	Variable	\$/kWh	\$0.0092	2,220,577	\$20,429
VNS14041	Variable	\$/kWh	\$0.0061	8,548,291	\$52,145
VNS14042	Variable	\$/kWh	\$ -	154,910,658	\$ -
VNS14043	Variable	\$/kWh	\$ -	135,404,593	\$ -
VNS14044	Variable	\$/kWh	\$0.0061	33,260,446	\$202,889
VNS14045	Variable	\$/kWh	\$ -	11,088,344	\$ -

Price plan	Description	Units	$P_{i,2014}$	$Q_{i,2012}$	$P_{i,2014}Q_{i,2012}$
VNS14046	Variable	\$/kWh	\$0.0092	2,138,275	\$19,672
VNS14047	Variable	\$/kWh	\$0.0092	4,420,121	\$40,665
VNS14048	Variable	\$/kWh	\$ -	2,404,040	\$ -
VNS14049	Variable	\$/kWh	\$0.0061	4,359,778	\$26,595
VNS14050	Variable	\$/kWh	\$0.0092	2,486,340	\$22,874
VNS14051	Variable	\$/kWh	\$ -	17,705,497	\$ -
VNS14052	Variable	\$/kWh	\$0.0092	5,414,576	\$49,814
VNS14053	Variable	\$/kWh	\$ -	5,034,262	\$ -
VNS14054	Variable	\$/kWh	\$0.0092	1,942,548	\$17,871
VNS14055	Variable	\$/kWh	\$0.0061	15,216,715	\$92,822
VNS14056	Variable	\$/kWh	\$ -	14,462,982	\$ -
VNS14057	Variable	\$/kWh	\$0.0092	5,718,907	\$52,614
VNS14058	Variable	\$/kWh	\$ -	28,081,310	\$ -
VNS14059	Variable	\$/kWh	\$0.0061	3,532,426	\$21,548
VNS14060	Variable	\$/kWh	\$ -	-	\$ -
VNS14061	Variable	\$/kWh	\$0.0061	13,188,038	\$80,447
VNS14062	Variable	\$/kWh	\$0.0000	279,503,228	\$5,590
VNS14063	Variable	\$/kWh	\$0.0092	4,126,784	\$37,966
VNS14064	Variable	\$/kWh	\$ -	24,615,728	\$ -
VNS14065	Variable	\$/kWh	\$0.0013	7,050,607	\$9,166
VNS14066	Variable	\$/kWh	\$0.0061	5,615,199	\$34,253
VNS14067	Variable	\$/kWh	\$0.0061	4,455,134	\$27,176
VNS14068	Variable	\$/kWh	\$0.0061	11,510,943	\$70,217
VNS14069	Variable	\$/kWh	\$0.0061	2,739,857	\$16,713
VNS14070	Variable	\$/kWh	\$0.0092	4,849,927	\$44,619
VNS14071	Variable	\$/kWh	\$0.0092	3,830,826	\$35,244
VNS14072	Variable	\$/kWh	\$0.0092	1,632,055	\$15,015
VNS14073	Variable	\$/kWh	\$0.0061	13,377,387	\$81,602
VNS14074	Variable	\$/kWh	\$0.0092	3,890,340	\$35,791
VNS14075	Variable	\$/kWh	\$0.0061	3,324,974	\$20,282
VNS14076	Variable	\$/kWh	\$ -	16,862,848	\$ -
VNS14077	Variable	\$/kWh	\$0.0092	3,499,080	\$32,192
VNS14078	Variable	\$/kWh	\$0.0092	2,933,939	\$26,992
VNS14079	Variable	\$/kWh	\$0.0061	5,839,422	\$35,620
VNS14080	Variable	\$/kWh	\$0.0003	33,193,316	\$9,958
VNS14081	Variable	\$/kWh	\$0.0008	50,903,147	\$41,435
VNS14082	Variable	\$/kWh	\$ -	3,660	\$ -
VNS14083	Variable	\$/kWh	\$ -	34,956,682	\$ -
VNS14084	Variable	\$/kWh	\$ -	35,474,727	\$ -
VNS14085	Variable	\$/kWh	\$ -	35,032	\$ -
VNS14086	Variable	\$/kWh	\$0.0061	14,335,312	\$87,445
VNS14087	Variable	\$/kWh	\$ -	-	\$ -

Appendix 10: Summary of $P_{i,2013}Q_{i,2011}$ for the 2014 assessment period

Sum	$P_{i,2013}Q_{i,2011}$ \$ 88,041,382
------------	--

	$P_{i,2013}Q_{i,2011}$
Auckland published charges between 1 October 2012 to 30 September 2013	\$ 46,417,544
North Island published charges between 1 October 2012 to 30 September 2013	\$ 30,241,936
Auckland published charges between 1 October 2012 to 30 September 2013 - scaling	-\$ 686,424
Auckland non-standard charges between 1 October 2012 to 30 September 2013	\$ 6,976,188
North Island non-standard charges between 1 October 2012 to 30 September 2013	\$ 5,092,138

Appendix 11: Auckland published charges from 1 October 2012

	<i>P_{i,2013} Q_{i,2011}</i>
Sum	\$ 46,417,544

Residential

Price plan	Code	Description	Units	<i>P_{i,2013}</i>	<i>Q_{i,2011}</i>	<i>P_{i,2013} Q_{i,2011}</i>
GA0R	GA0R-FIXD	Fixed	\$/day	\$ 0.2600	30,491,136	\$ 7,927,695
GA0R	GA0R-24UC	Variable	\$/kWh	\$ 0.0331	602,847,816	\$ 19,954,263

Business

Price plan	Code	Description	Units	<i>P_{i,2013}</i>	<i>Q_{i,2011}</i>	<i>P_{i,2013} Q_{i,2011}</i>
GA01	GA01-FIXD	Fixed	\$/day	\$ 0.3800	808,028	\$ 307,051
GA01	GA01-24UC	Variable	\$/kWh	\$ 0.0298	58,306,592	\$ 1,737,536

Commercial

Price plan	Code	Description	Units	<i>P_{i,2013}</i>	<i>Q_{i,2011}</i>	<i>P_{i,2013} Q_{i,2011}</i>
GA02	GA02-FIXD	Fixed	\$/day	\$ 1.3700	785,970	\$ 1,076,779
GA02	GA02-24UC	Variable	\$/kWh	\$ 0.0219	197,924,572	\$ 4,334,548
GA12	GA12-FIXD	Fixed	\$/day	\$ 1.1800	63,793	\$ 75,276
GA12	GA12-24UC	Variable	\$/kWh	\$ 0.0156	16,325,542	\$ 254,678
GAS3	GAS3-FIXD	Fixed	\$/day	\$ 3.8800	32,925	\$ 127,749
GAS3	GAS3-24UC	Variable	\$/kWh	\$ 0.0130	60,931,822	\$ 792,114
GAT3	GAT3-FIXD	Fixed	\$/day	\$ 3.9200	265,384	\$ 1,040,305
GAT3	GAT3-24UC	Variable	\$/kWh	\$ 0.0131	388,445,260	\$ 5,088,633

Industrial

Price plan	Code	Description	Units	<i>P_{i,2013}</i>	<i>Q_{i,2011}</i>	<i>P_{i,2013} Q_{i,2011}</i>
GAS4	GAS4-FIXD	Fixed	\$/day	\$ 11.1600	6,183	\$ 69,002
GAS4	GAS4-24UC	Variable	\$/kWh	\$ 0.0099	66,735,599	\$ 660,682
GAT4	GAT4-FIXD	Fixed	\$/day	\$ 11.7500	33,224	\$ 390,382
GAT4	GAT4-24UC	Variable	\$/kWh	\$ 0.0105	245,795,222	\$ 2,580,850

Appendix 12: North Island published charges from 1 October 2012

	<i>P_{i,2013}</i>	<i>Q_{i,2011}</i>
Sum	\$ 30,241,936	

Residential

Price plan	Code	Description	Units	<i>P_{i,2013}</i>	<i>Q_{i,2011}</i>	<i>P_{i,2013} Q_{i,2011}</i>
GN0R	GN0R-FIXD	Fixed	\$/day	\$ 0.2600	21,423,435	\$ 5,570,093
GN0R	GN0R-24UC	Variable	\$/kWh	\$ 0.0339	392,395,554	\$ 13,302,209

Business

Price plan	Code	Description	Units	<i>P_{i,2013}</i>	<i>Q_{i,2011}</i>	<i>P_{i,2013} Q_{i,2011}</i>
GN01	GN01-FIXD	Fixed	\$/day	\$ 0.3500	770,495	\$ 269,673
GN01	GN01-24UC	Variable	\$/kWh	\$ 0.0299	44,779,511	\$ 1,338,907

Commercial

Price plan	Code	Description	Units	<i>P_{i,2013}</i>	<i>Q_{i,2011}</i>	<i>P_{i,2013} Q_{i,2011}</i>
GNS2	GNS2-FIXD	Fixed	\$/day	\$ 0.5000	1,825	\$ 913
GNS2	GNS2-24UC	Variable	\$/kWh	\$ 0.0281	429,771	\$ 12,077
GNT2	GNT2-FIXD	Fixed	\$/day	\$ 0.5100	469,538	\$ 239,464
GNT2	GNT2-24UC	Variable	\$/kWh	\$ 0.0285	101,889,322	\$ 2,903,846
GNS3	GNS3-FIXD	Fixed	\$/day	\$ 3.3200	4,380	\$ 14,542
GNS3	GNS3-24UC	Variable	\$/kWh	\$ 0.0229	6,913,386	\$ 158,317
GNT3	GNT3-FIXD	Fixed	\$/day	\$ 3.3700	177,218	\$ 597,225
GNT3	GNT3-24UC	Variable	\$/kWh	\$ 0.0232	181,575,831	\$ 4,212,559

Industrial

Price plan	Code	Description	Units	<i>P_{i,2013}</i>	<i>Q_{i,2011}</i>	<i>P_{i,2013} Q_{i,2011}</i>
GNS4	GNS4-FIXD	Fixed	\$/day	\$ 10.5100	975	\$ 10,247
GNS4	GNS4-24UC	Variable	\$/kWh	\$ 0.0172	8,358,381	\$ 143,764
GNT4	GNT4-FIXD	Fixed	\$/day	\$ 10.6700	11,815	\$ 126,066
GNT4	GNT4-24UC	Variable	\$/kWh	\$ 0.0175	76,687,700	\$ 1,342,035

Appendix 13: Auckland network – 2013 Scaling

				<i>P_{i,2013}Q_{i,2011}</i>		
Sum				-\$ 686,424		
Price plan	Code	Description	Units	<i>P_{i,2013}</i>	<i>Q_{i,2011}</i>	<i>P_{i,2013}Q_{i,2011}</i>
GA01	GA01-24UC	Variable	\$/kWh	\$ 0.0298	- 74,941	-\$ 2,233
GA02	GA02-24UC	Variable	\$/kWh	\$ 0.0219	1,041,213	\$ 22,803
GA0R	GA0R-24UC	Variable	\$/kWh	\$ 0.0331	- 17,557,646	-\$ 581,158
GA12	GA12-24UC	Variable	\$/kWh	\$ 0.0156	14,101	\$ 220
GAT3	GAT3-24UC	Variable	\$/kWh	\$ 0.0131	- 507,111	-\$ 6,643
GAS4	GAS4-24UC	Variable	\$/kWh	\$ 0.0099	- 3,020,952	-\$ 29,907
GAT4	GAT4-24UC	Variable	\$/kWh	\$ 0.0105	- 8,524,234	-\$ 89,504

Appendix 14: Auckland non-standard charges from 1 October 2012

			<i>P_{i,2013}Q_{i,2011}</i>		
Sum			\$ 6,976,188		
Price plan	Description	Units	<i>P_{i,2013}</i>	<i>Q_{i,2011}</i>	<i>P_{i,2013}Q_{i,2011}</i>
VNS13087	Fixed	\$/day	\$11.75	365	\$4,289
VNS13088	Fixed	\$/day	\$3.92	365	\$1,431
VNS13089	Fixed	\$/day	\$3.88	365	\$1,416
VNS13090	Fixed	\$/day	\$3.88	365	\$1,416
VNS13091	Fixed	\$/day	\$11.75	334	\$3,925
VNS13092	Fixed	\$/day	\$11.16	365	\$4,073
VNS13093	Fixed	\$/day	\$11.75	365	\$4,289
VNS13094	Fixed	\$/day	\$3.92	365	\$1,431
VNS13095	Fixed	\$/day	\$3.92	365	\$1,431
VNS13096	Fixed	\$/day	\$3.88	365	\$1,416
VNS13097	Fixed	\$/day	\$3.88	365	\$1,416
VNS13098	Fixed	\$/day	\$11.75	365	\$4,289
VNS13099	Fixed	\$/day	\$3.88	365	\$1,416
VNS13100	Fixed	\$/day	\$11.75	365	\$4,289
VNS13101	Fixed	\$/day	\$11.16	365	\$4,073
VNS13102	Fixed	\$/day	\$3.88	365	\$1,416
VNS13103	Fixed	\$/day	\$3.88	365	\$1,416
VNS13104	Fixed	\$/day	\$11.75	365	\$4,289
VNS13105	Fixed	\$/day	\$3.92	365	\$1,431
VNS13106	Fixed	\$/day	\$3.92	365	\$1,431
VNS13107	Fixed	\$/day	\$11.75	365	\$4,289
VNS13108	Fixed	\$/day	\$11.75	365	\$4,289
VNS13109	Fixed	\$/day	\$11.16	365	\$4,073
VNS13110	Fixed	\$/day	\$11.16	365	\$4,073
VNS13111	Fixed	\$/day	\$11.16	365	\$4,073
VNS13112	Fixed	\$/day	\$11.75	365	\$4,289
VNS13113	Fixed	\$/day	\$11.75	365	\$4,289
VNS13114	Fixed	\$/day	\$3.88	365	\$1,416
VNS13115	Fixed	\$/day	\$3.92	365	\$1,431
VNS13116	Fixed	\$/day	\$3.92	365	\$1,431
VNS13117	Fixed	\$/day	\$11.75	365	\$4,289
VNS13118	Fixed	\$/day	\$3.92	365	\$1,431
VNS13119	Fixed	\$/day	\$11.75	365	\$4,289
VNS13120	Fixed	\$/day	\$11.75	365	\$4,289
VNS13121	Fixed	\$/day	\$11.75	365	\$4,289
VNS13122	Fixed	\$/day	\$3.92	365	\$1,431
VNS13123	Fixed	\$/day	\$3.92	365	\$1,431
VNS13124	Fixed	\$/day	\$11.75	365	\$4,289
VNS13125	Fixed	\$/day	\$49.50	365	\$18,068
VNS13126	Fixed	\$/day	\$143.52	365	\$52,385
VNS13127	Fixed	\$/day	\$54.16	365	\$19,768
VNS13128	Fixed	\$/day	\$270.80	365	\$98,842
VNS13129	Fixed	\$/day	\$19.54	365	\$7,132

Price plan	Description	Units	$P_{i,2013}$	$Q_{i,2011}$	$P_{i,2013}Q_{i,2011}$
VNS13130	Fixed	\$/day	\$19.01	365	\$6,939
VNS13131	Fixed	\$/day	\$176.00	365	\$64,240
VNS13132	Fixed	\$/day	\$53.92	365	\$19,681
VNS13133	Fixed	\$/day	\$68.57	365	\$25,028
VNS13134	Fixed	\$/day	\$-	365	\$-
VNS13135	Fixed	\$/day	\$81.24	365	\$29,653
VNS13136	Fixed	\$/day	\$216.64	365	\$79,074
VNS13137	Fixed	\$/day	\$6.06	3	\$18
VNS13138	Fixed	\$/day	\$111.44	365	\$40,676
VNS13139	Fixed	\$/day	\$73.50	365	\$26,828
VNS13140	Fixed	\$/day	\$76.85	365	\$28,050
VNS13141	Fixed	\$/day	\$31.02	365	\$11,322
VNS13142	Fixed	\$/day	\$16.37	365	\$5,975
VNS13143	Fixed	\$/day	\$33.00	365	\$12,045
VNS13144	Fixed	\$/day	\$109.13	365	\$39,832
VNS13145	Fixed	\$/day	\$5.55	365	\$2,026
VNS13146	Fixed	\$/day	\$115.96	365	\$42,325
VNS13147	Fixed	\$/day	\$14.46	365	\$5,278
VNS13148	Fixed	\$/day	\$67.14	365	\$24,506
VNS13149	Fixed	\$/day	\$12.05	365	\$4,398
VNS13150	Fixed	\$/day	\$46.18	365	\$16,856
VNS13151	Fixed	\$/day	\$55.00	365	\$20,075
VNS13152	Fixed	\$/day	\$94.78	365	\$34,595
VNS13153	Fixed	\$/day	\$28.32	365	\$10,337
VNS13154	Fixed	\$/day	\$30.02	365	\$10,957
VNS13155	Fixed	\$/day	\$46.45	365	\$16,954
VNS13156	Fixed	\$/day	\$60.50	365	\$22,083
VNS13157	Fixed	\$/day	\$216.64	365	\$79,074
VNS13158	Fixed	\$/day	\$81.24	365	\$29,653
VNS13159	Fixed	\$/day	\$-	-	\$-
VNS13160	Fixed	\$/day	\$30.29	365	\$11,056
VNS13161	Fixed	\$/day	\$-	4	\$-
VNS13162	Fixed	\$/day	\$78.20	365	\$28,543
VNS13163	Fixed	\$/day	\$72.60	365	\$26,499
VNS13164	Fixed	\$/day	\$18.17	365	\$6,632
VNS13165	Fixed	\$/day	\$99.73	365	\$36,401
VNS13166	Fixed	\$/day	\$2,454.96	365	\$896,060
VNS13167	Fixed	\$/day	\$81.24	365	\$29,653
VNS13168	Fixed	\$/day	\$262.14	365	\$95,681
VNS13169	Fixed	\$/day	\$37.32	365	\$13,622
VNS13170	Fixed	\$/day	\$27.08	365	\$9,884
VNS13171	Fixed	\$/day	\$32.78	365	\$11,965
VNS13172	Fixed	\$/day	\$1.01	365	\$369
VNS13173	Fixed	\$/day	\$37.91	365	\$13,837
VNS13174	Fixed	\$/day	\$4.82	365	\$1,759
VNS13175	Fixed	\$/day	\$28.28	365	\$10,322
VNS13176	Fixed	\$/day	\$25.70	365	\$9,381
VNS13177	Fixed	\$/day	\$4.63	365	\$1,690
VNS13178	Fixed	\$/day	\$56.99	365	\$20,801
VNS13179	Fixed	\$/day	\$24.10	365	\$8,797

Price plan	Description	Units	$P_{i,2013}$	$Q_{i,2011}$	$P_{i,2013}Q_{i,2011}$
VNS13180	Fixed	\$/day	\$43.16	365	\$15,753
VNS13181	Fixed	\$/day	\$99.73	365	\$36,401
VNS13182	Fixed	\$/day	\$18.00	365	\$6,570
VNS13183	Fixed	\$/day	\$99.73	365	\$36,401
VNS13184	Fixed	\$/day	\$1.03	72	\$74
VNS13185	Fixed	\$/day	\$237.66	365	\$86,746
VNS13186	Fixed	\$/day	\$-	-	\$-
VNS13187	Fixed	\$/day	\$57.20	365	\$20,878
VNS13188	Fixed	\$/day	\$99.73	365	\$36,401
VNS13189	Fixed	\$/day	\$30.29	365	\$11,056
VNS13190	Fixed	\$/day	\$72.75	365	\$26,554
VNS13191	Fixed	\$/day	\$64.67	365	\$23,605
VNS13192	Fixed	\$/day	\$5.05	365	\$1,843
VNS13193	Fixed	\$/day	\$4.78	365	\$1,745
VNS13194	Fixed	\$/day	\$49.50	365	\$18,068
VNS13195	Fixed	\$/day	\$100.95	365	\$36,847
VNS13196	Fixed	\$/day	\$323.28	365	\$117,997
VNS13197	Fixed	\$/day	\$25.82	365	\$9,424
VNS13198	Fixed	\$/day	\$138.14	242	\$33,430
VNS13199	Fixed	\$/day	\$-	365	\$-

Price plan	Description	Units	$P_{i,2013}$	$Q_{i,2011}$	$P_{i,2013}Q_{i,2011}$
VNS13087	Variable	\$/kWh	\$0.0105	1,813,929	\$19,046
VNS13088	Variable	\$/kWh	\$0.0131	1,020,512	\$13,369
VNS13089	Variable	\$/kWh	\$0.0130	2,052,740	\$26,686
VNS13090	Variable	\$/kWh	\$0.0130	842,664	\$10,955
VNS13091	Variable	\$/kWh	\$0.0105	1,822,306	\$19,134
VNS13092	Variable	\$/kWh	\$0.0099	11,487,593	\$113,727
VNS13093	Variable	\$/kWh	\$0.0105	11,279,583	\$118,436
VNS13094	Variable	\$/kWh	\$0.0131	643,896	\$8,435
VNS13095	Variable	\$/kWh	\$0.0131	1,593,382	\$20,873
VNS13096	Variable	\$/kWh	\$0.0130	1,353,944	\$17,601
VNS13097	Variable	\$/kWh	\$0.0130	1,307,488	\$16,997
VNS13098	Variable	\$/kWh	\$0.0105	4,784,464	\$50,237
VNS13099	Variable	\$/kWh	\$0.0130	426,100	\$5,539
VNS13100	Variable	\$/kWh	\$0.0105	3,218,678	\$33,796
VNS13101	Variable	\$/kWh	\$0.0099	1,703,874	\$16,868
VNS13102	Variable	\$/kWh	\$0.0130	10,801,549	\$140,420
VNS13103	Variable	\$/kWh	\$0.0130	1,466,509	\$19,065
VNS13104	Variable	\$/kWh	\$0.0105	7,686,683	\$80,710
VNS13105	Variable	\$/kWh	\$0.0131	917,943	\$12,025
VNS13106	Variable	\$/kWh	\$0.0131	828,619	\$10,855
VNS13107	Variable	\$/kWh	\$0.0105	1,719,234	\$18,052
VNS13108	Variable	\$/kWh	\$0.0105	19,351,533	\$203,191
VNS13109	Variable	\$/kWh	\$0.0099	26,740,208	\$264,728
VNS13110	Variable	\$/kWh	\$0.0099	5,255,058	\$52,025
VNS13111	Variable	\$/kWh	\$0.0099	3,765,828	\$37,282

Price plan	Description	Units	$P_{i,2013}$	$Q_{i,2011}$	$P_{i,2013}Q_{i,2011}$
VNS13112	Variable	\$/kWh	\$0.0105	767,181	\$8,055
VNS13113	Variable	\$/kWh	\$0.0105	3,580,488	\$37,595
VNS13114	Variable	\$/kWh	\$0.0130	2,810,356	\$36,535
VNS13115	Variable	\$/kWh	\$0.0131	575,315	\$7,537
VNS13116	Variable	\$/kWh	\$0.0131	1,237,094	\$16,206
VNS13117	Variable	\$/kWh	\$0.0105	698,605	\$7,335
VNS13118	Variable	\$/kWh	\$0.0131	597,675	\$7,830
VNS13119	Variable	\$/kWh	\$0.0105	3,847,605	\$40,400
VNS13120	Variable	\$/kWh	\$0.0105	2,080,549	\$21,846
VNS13121	Variable	\$/kWh	\$0.0105	643,258	\$6,754
VNS13122	Variable	\$/kWh	\$0.0131	2,971,648	\$38,929
VNS13123	Variable	\$/kWh	\$0.0131	4,162,794	\$54,533
VNS13124	Variable	\$/kWh	\$0.0105	2,900,762	\$30,458
VNS13125	Variable	\$/kWh	\$0.0024	23,945,252	\$57,469
VNS13126	Variable	\$/kWh	\$0.0011	6,368,354	\$7,005
VNS13127	Variable	\$/kWh	\$0.0011	26,047,379	\$28,652
VNS13128	Variable	\$/kWh	\$0.0005	350,267,736	\$175,134
VNS13129	Variable	\$/kWh	\$0.0033	8,933,939	\$29,482
VNS13130	Variable	\$/kWh	\$0.0022	9,474,610	\$20,844
VNS13131	Variable	\$/kWh	\$-	10,891,572	\$-
VNS13132	Variable	\$/kWh	\$-	5,058,887	\$-
VNS13133	Variable	\$/kWh	\$-	6,563,012	\$-
VNS13134	Variable	\$/kWh	\$-	439,090	\$-
VNS13135	Variable	\$/kWh	\$0.0011	9,553,500	\$10,509
VNS13136	Variable	\$/kWh	\$0.0011	105,288,507	\$115,817
VNS13137	Variable	\$/kWh	\$0.0045	15,845	\$71
VNS13138	Variable	\$/kWh	\$0.0032	32,109,340	\$102,750
VNS13139	Variable	\$/kWh	\$0.0026	16,313,208	\$42,414
VNS13140	Variable	\$/kWh	\$0.0027	23,163,205	\$62,541
VNS13141	Variable	\$/kWh	\$-	2,044,187	\$-
VNS13142	Variable	\$/kWh	\$0.0013	1,519,736	\$1,976
VNS13143	Variable	\$/kWh	\$0.0013	4,551,157	\$5,917
VNS13144	Variable	\$/kWh	\$0.0011	32,079,377	\$35,287
VNS13145	Variable	\$/kWh	\$0.0013	3,201,045	\$4,161
VNS13146	Variable	\$/kWh	\$0.0056	28,985,115	\$162,317
VNS13147	Variable	\$/kWh	\$0.0072	2,647,363	\$19,061
VNS13148	Variable	\$/kWh	\$0.0010	32,184,495	\$32,184
VNS13149	Variable	\$/kWh	\$0.0022	4,837,906	\$10,643
VNS13150	Variable	\$/kWh	\$-	1,799,624	\$-
VNS13151	Variable	\$/kWh	\$0.0061	10,061,759	\$61,377
VNS13152	Variable	\$/kWh	\$0.0061	13,397,038	\$81,722
VNS13153	Variable	\$/kWh	\$0.0036	9,659,166	\$34,773
VNS13154	Variable	\$/kWh	\$0.0046	55,839,990	\$256,864
VNS13155	Variable	\$/kWh	\$0.0062	4,544,131	\$28,174
VNS13156	Variable	\$/kWh	\$0.0013	10,727,594	\$13,946
VNS13157	Variable	\$/kWh	\$0.0011	99,739,124	\$109,713
VNS13158	Variable	\$/kWh	\$0.0011	4,946,663	\$5,441
VNS13159	Variable	\$/kWh	\$-	-	\$-
VNS13160	Variable	\$/kWh	\$0.0101	3,560,975	\$35,966
VNS13161	Variable	\$/kWh	\$-	37	\$-

Price plan	Description	Units	$P_{i,2013}$	$Q_{i,2011}$	$P_{i,2013}Q_{i,2011}$
VNS13162	Variable	\$/kWh	\$0.0011	30,288,355	\$33,317
VNS13163	Variable	\$/kWh	\$0.0063	8,071,016	\$50,847
VNS13164	Variable	\$/kWh	\$0.0056	3,422,042	\$19,163
VNS13165	Variable	\$/kWh	\$0.0009	100,419	\$94
VNS13166	Variable	\$/kWh	\$-	141,497,260	\$-
VNS13167	Variable	\$/kWh	\$0.0011	9,392,179	\$10,331
VNS13168	Variable	\$/kWh	\$0.0010	21,002,447	\$21,002
VNS13169	Variable	\$/kWh	\$0.0056	9,638,812	\$53,977
VNS13170	Variable	\$/kWh	\$0.0011	3,437,045	\$3,781
VNS13171	Variable	\$/kWh	\$0.0070	6,196,975	\$43,379
VNS13172	Variable	\$/kWh	\$0.0101	-	\$-
VNS13173	Variable	\$/kWh	\$0.0020	22,692,655	\$45,385
VNS13174	Variable	\$/kWh	\$0.0072	288,404	\$2,077
VNS13175	Variable	\$/kWh	\$0.0026	4,098,361	\$10,656
VNS13176	Variable	\$/kWh	\$0.0028	6,500,216	\$18,201
VNS13177	Variable	\$/kWh	\$0.0034	4,352,941	\$14,800
VNS13178	Variable	\$/kWh	\$0.0036	18,958,697	\$68,251
VNS13179	Variable	\$/kWh	\$0.0022	19,075,429	\$41,966
VNS13180	Variable	\$/kWh	\$0.0029	10,384,781	\$30,116
VNS13181	Variable	\$/kWh	\$0.0009	35,392,875	\$33,057
VNS13182	Variable	\$/kWh	\$0.0010	3,382,992	\$3,383
VNS13183	Variable	\$/kWh	\$0.0009	16,635,205	\$15,537
VNS13184	Variable	\$/kWh	\$-	-	\$-
VNS13185	Variable	\$/kWh	\$0.0025	15,038,853	\$37,597
VNS13186	Variable	\$/kWh	\$-	-	\$-
VNS13187	Variable	\$/kWh	\$0.0050	6,640,575	\$33,203
VNS13188	Variable	\$/kWh	\$0.0009	19,136,876	\$17,874
VNS13189	Variable	\$/kWh	\$0.0101	4,654,565	\$47,011
VNS13190	Variable	\$/kWh	\$0.0025	22,211,104	\$55,528
VNS13191	Variable	\$/kWh	\$0.0025	32,627,435	\$81,569
VNS13192	Variable	\$/kWh	\$0.0056	447,712	\$2,507
VNS13193	Variable	\$/kWh	\$0.0104	627,239	\$6,523
VNS13194	Variable	\$/kWh	\$0.0029	16,263,979	\$47,166
VNS13195	Variable	\$/kWh	\$0.0036	3,766,085	\$13,558
VNS13196	Variable	\$/kWh	\$-	29,071,199	\$-
VNS13197	Variable	\$/kWh	\$0.0019	9,403,603	\$17,867
VNS13198	Variable	\$/kWh	\$0.0020	1,801,495	\$3,603
VNS13199	Variable	\$/kWh	\$0.0028	46,142,740	\$129,200

Appendix 15: North Island non-standard charges from 1 October 2012

					<i>P_{i,2013}Q_{i,2011}</i>
Sum					\$ 5,092,138
Price plan	Description	Units	<i>P_{i,2013}</i>	<i>Q_{i,2011}</i>	<i>P_{i,2013}Q_{i,2011}</i>
VNS13001	Fixed	\$/day	\$3.3700	365	\$1,230
VNS13002	Fixed	\$/day	\$10.6700	365	\$3,895
VNS13003	Fixed	\$/day	\$3.3700	365	\$1,230
VNS13004	Fixed	\$/day	\$10.6700	365	\$3,895
VNS13005	Fixed	\$/day	\$10.6700	365	\$3,895
VNS13006	Fixed	\$/day	\$10.5100	365	\$3,836
VNS13007	Fixed	\$/day	\$10.6700	365	\$3,895
VNS13008	Fixed	\$/day	\$-	212	\$-
VNS13009	Fixed	\$/day	\$313.6000	365	\$114,464
VNS13010	Fixed	\$/day	\$276.3000	365	\$100,850
VNS13011	Fixed	\$/day	\$129.3300	365	\$47,205
VNS13012	Fixed	\$/day	\$-	365	\$-
VNS13013	Fixed	\$/day	\$83.4600	365	\$30,463
VNS13014	Fixed	\$/day	\$12.4600	365	\$4,548
VNS13015	Fixed	\$/day	\$55.4800	365	\$20,250
VNS13016	Fixed	\$/day	\$131.1200	365	\$47,859
VNS13017	Fixed	\$/day	\$73.5800	365	\$26,857
VNS13018	Fixed	\$/day	\$10.3900	365	\$3,792
VNS13019	Fixed	\$/day	\$139.7700	365	\$51,016
VNS13020	Fixed	\$/day	\$212.6000	365	\$77,599
VNS13021	Fixed	\$/day	\$165.2700	365	\$60,324
VNS13022	Fixed	\$/day	\$92.1400	365	\$33,631
VNS13023	Fixed	\$/day	\$-	365	\$-
VNS13024	Fixed	\$/day	\$126.4600	365	\$46,158
VNS13025	Fixed	\$/day	\$272.4700	365	\$99,452
VNS13026	Fixed	\$/day	\$198.0300	365	\$72,281
VNS13027	Fixed	\$/day	\$42.9500	365	\$15,677
VNS13028	Fixed	\$/day	\$214.9600	365	\$78,460
VNS13029	Fixed	\$/day	\$24.2000	365	\$8,833
VNS13030	Fixed	\$/day	\$39.9300	365	\$14,574
VNS13031	Fixed	\$/day	\$11.8300	365	\$4,318
VNS13032	Fixed	\$/day	\$150.8900	365	\$55,075
VNS13033	Fixed	\$/day	\$131.2900	365	\$47,921
VNS13034	Fixed	\$/day	\$139.4300	365	\$50,892
VNS13035	Fixed	\$/day	\$259.5800	365	\$94,747
VNS13036	Fixed	\$/day	\$280.1200	365	\$102,244
VNS13037	Fixed	\$/day	\$110.2900	365	\$40,256
VNS13038	Fixed	\$/day	\$75.7700	365	\$27,656
VNS13039	Fixed	\$/day	\$113.5300	365	\$41,438
VNS13040	Fixed	\$/day	\$26.3300	365	\$9,610
VNS13041	Fixed	\$/day	\$174.3000	365	\$63,620
VNS13042	Fixed	\$/day	\$91.3300	365	\$33,335
VNS13043	Fixed	\$/day	\$22.6400	365	\$8,264
VNS13044	Fixed	\$/day	\$313.2300	365	\$114,329

Price plan	Description	Units	$P_{i,2013}$	$Q_{i,2011}$	$P_{i,2013}Q_{i,2011}$
VNS13045	Fixed	\$/day	\$55.5200	365	\$20,265
VNS13046	Fixed	\$/day	\$6.1400	365	\$2,241
VNS13047	Fixed	\$/day	\$63.3600	365	\$23,126
VNS13048	Fixed	\$/day	\$38.8200	365	\$14,169
VNS13049	Fixed	\$/day	\$56.8100	365	\$20,736
VNS13050	Fixed	\$/day	\$100.7300	365	\$36,766
VNS13051	Fixed	\$/day	\$177.1000	365	\$64,642
VNS13052	Fixed	\$/day	\$58.9300	365	\$21,509
VNS13053	Fixed	\$/day	\$-	365	\$-
VNS13054	Fixed	\$/day	\$21.1700	365	\$7,727
VNS13055	Fixed	\$/day	\$458.4600	365	\$167,338
VNS13056	Fixed	\$/day	\$206.8000	365	\$75,482
VNS13057	Fixed	\$/day	\$129.8100	365	\$47,381
VNS13058	Fixed	\$/day	\$313.5000	365	\$114,428
VNS13059	Fixed	\$/day	\$134.7300	365	\$49,176
VNS13060	Fixed	\$/day	\$-	365	\$-
VNS13061	Fixed	\$/day	\$391.3100	365	\$142,828
VNS13062	Fixed	\$/day	\$50.1300	365	\$18,297
VNS13063	Fixed	\$/day	\$107.7800	365	\$39,340
VNS13064	Fixed	\$/day	\$31.7900	365	\$11,603
VNS13065	Fixed	\$/day	\$70.4800	365	\$25,725
VNS13066	Fixed	\$/day	\$186.7800	365	\$68,175
VNS13067	Fixed	\$/day	\$80.8300	365	\$29,503
VNS13068	Fixed	\$/day	\$229.2600	365	\$83,680
VNS13069	Fixed	\$/day	\$129.3300	365	\$47,205
VNS13070	Fixed	\$/day	\$116.2900	365	\$42,446
VNS13071	Fixed	\$/day	\$122.0200	365	\$44,537
VNS13072	Fixed	\$/day	\$80.8300	365	\$29,503
VNS13073	Fixed	\$/day	\$248.3300	365	\$90,640
VNS13074	Fixed	\$/day	\$37.0600	365	\$13,527
VNS13075	Fixed	\$/day	\$41.6000	365	\$15,184
VNS13076	Fixed	\$/day	\$141.1700	365	\$51,527
VNS13077	Fixed	\$/day	\$172.1300	365	\$62,827
VNS13078	Fixed	\$/day	\$6.7200	365	\$2,453
VNS13079	Fixed	\$/day	\$99.0000	365	\$36,135
VNS13080	Fixed	\$/day	\$54.3200	365	\$19,827
VNS13081	Fixed	\$/day	\$-	365	\$-
VNS13082	Fixed	\$/day	\$-	212	\$-
VNS13083	Fixed	\$/day	\$-	365	\$-
VNS13084	Fixed	\$/day	\$-	365	\$-
VNS13085	Fixed	\$/day	\$-	365	\$-
VNS13086	Fixed	\$/day	\$226.0500	-	\$-

Price plan	Description	Units	$P_{i,2013}$	$Q_{i,2011}$	$P_{i,2013}Q_{i,2011}$
VNS13001	Variable	\$/kWh	\$0.0232	3,051,206	\$ 70,788
VNS13002	Variable	\$/kWh	\$0.0175	4,879,475	\$ 85,391
VNS13003	Variable	\$/kWh	\$0.0232	3,161,217	\$ 73,340
VNS13004	Variable	\$/kWh	\$0.0175	1,732,636	\$ 30,321
VNS13005	Variable	\$/kWh	\$0.0175	4,350,963	\$ 76,142
VNS13006	Variable	\$/kWh	\$0.0172	8,513,447	\$146,431
VNS13007	Variable	\$/kWh	\$0.0175	2,471,439	\$ 43,250
VNS13008	Variable	\$/kWh	\$ -	409,942	\$-
VNS13009	Variable	\$/kWh	\$ -	44,299,129	\$-
VNS13010	Variable	\$/kWh	\$ -	45,858,668	\$-
VNS13011	Variable	\$/kWh	\$0.0019	4,944,447	\$ 9,394
VNS13012	Variable	\$/kWh	\$ -	423	\$-
VNS13013	Variable	\$/kWh	\$0.0054	19,621,707	\$105,957
VNS13014	Variable	\$/kWh	\$0.0161	1,748,169	\$ 28,146
VNS13015	Variable	\$/kWh	\$0.0076	4,190,262	\$ 31,846
VNS13016	Variable	\$/kWh	\$0.0067	4,304,076	\$ 28,837
VNS13017	Variable	\$/kWh	\$0.0015	15,408,832	\$ 23,113
VNS13018	Variable	\$/kWh	\$0.0191	3,428,593	\$ 65,486
VNS13019	Variable	\$/kWh	\$ -	4,439,292	\$-
VNS13020	Variable	\$/kWh	\$0.0020	9,898,476	\$ 19,797
VNS13021	Variable	\$/kWh	\$0.0041	8,232,690	\$ 33,754
VNS13022	Variable	\$/kWh	\$0.0019	5,117,287	\$ 9,723
VNS13023	Variable	\$/kWh	\$0.0048	5,006,490	\$ 24,031
VNS13024	Variable	\$/kWh	\$0.0057	7,086,733	\$ 40,394
VNS13025	Variable	\$/kWh	\$ -	19,386,861	\$-
VNS13026	Variable	\$/kWh	\$ -	6,343,680	\$-
VNS13027	Variable	\$/kWh	\$0.0175	3,614,543	\$ 63,255
VNS13028	Variable	\$/kWh	\$0.0042	9,937,366	\$ 41,737
VNS13029	Variable	\$/kWh	\$ -	98,382,463	\$-
VNS13030	Variable	\$/kWh	\$ -	71,508,908	\$-
VNS13031	Variable	\$/kWh	\$ -	48,725,930	\$-
VNS13032	Variable	\$/kWh	\$ -	62,486,142	\$-
VNS13033	Variable	\$/kWh	\$ -	163,798,576	\$-
VNS13034	Variable	\$/kWh	\$ -	6,952,585	\$-
VNS13035	Variable	\$/kWh	\$ -	121,754,784	\$-
VNS13036	Variable	\$/kWh	\$ -	46,105,590	\$-
VNS13037	Variable	\$/kWh	\$0.0045	4,493,058	\$ 20,219
VNS13038	Variable	\$/kWh	\$0.0070	5,984,367	\$ 41,891
VNS13039	Variable	\$/kWh	\$ -	3,862,580	\$-
VNS13040	Variable	\$/kWh	\$0.0112	2,364,797	\$ 26,486
VNS13041	Variable	\$/kWh	\$ -	8,914,055	\$-
VNS13042	Variable	\$/kWh	\$ -	148,580,839	\$-
VNS13043	Variable	\$/kWh	\$ -	113,790,753	\$-
VNS13044	Variable	\$/kWh	\$0.0035	24,994,257	\$ 87,480
VNS13045	Variable	\$/kWh	\$ -	12,556,126	\$-

Price plan	Description	Units	$P_{i,2013}$	$Q_{i,2011}$	$P_{i,2013}Q_{i,2011}$
VNS13046	Variable	\$/kWh	\$0.0221	2,427,958	\$ 53,658
VNS13047	Variable	\$/kWh	\$0.0157	5,321,308	\$ 83,545
VNS13048	Variable	\$/kWh	\$-	1,362,474	\$-
VNS13049	Variable	\$/kWh	\$0.0019	5,536,264	\$ 10,519
VNS13050	Variable	\$/kWh	\$-	3,713,267	\$-
VNS13051	Variable	\$/kWh	\$-	19,410,357	\$-
VNS13052	Variable	\$/kWh	\$0.0105	4,821,171	\$ 50,622
VNS13053	Variable	\$/kWh	\$-	7,216,481	\$-
VNS13054	Variable	\$/kWh	\$0.0121	2,416,732	\$ 29,242
VNS13055	Variable	\$/kWh	\$0.0029	13,974,818	\$ 40,527
VNS13056	Variable	\$/kWh	\$-	14,659,341	\$-
VNS13057	Variable	\$/kWh	\$0.0098	6,261,132	\$ 61,359
VNS13058	Variable	\$/kWh	\$-	28,850,730	\$-
VNS13059	Variable	\$/kWh	\$-	4,158,644	\$-
VNS13060	Variable	\$/kWh	\$-	6,328,000	\$-
VNS13061	Variable	\$/kWh	\$-	11,522,022	\$-
VNS13062	Variable	\$/kWh	\$-	73,769,370	\$-
VNS13063	Variable	\$/kWh	\$-	4,066,185	\$-
VNS13064	Variable	\$/kWh	\$-	-	\$-
VNS13065	Variable	\$/kWh	\$0.0023	7,790,036	\$ 17,917
VNS13066	Variable	\$/kWh	\$-	6,813,834	\$-
VNS13067	Variable	\$/kWh	\$-	4,872,453	\$-
VNS13068	Variable	\$/kWh	\$-	11,092,916	\$-
VNS13069	Variable	\$/kWh	\$-	1,765,158	\$-
VNS13070	Variable	\$/kWh	\$-	3,637,190	\$-
VNS13071	Variable	\$/kWh	\$-	4,508,760	\$-
VNS13072	Variable	\$/kWh	\$-	1,459,440	\$-
VNS13073	Variable	\$/kWh	\$0.0053	14,750,086	\$ 78,175
VNS13074	Variable	\$/kWh	\$0.0169	3,561,173	\$ 60,184
VNS13075	Variable	\$/kWh	\$0.0132	3,430,224	\$ 45,279
VNS13076	Variable	\$/kWh	\$-	18,363,890	\$-
VNS13077	Variable	\$/kWh	\$-	3,813,034	\$-
VNS13078	Variable	\$/kWh	\$0.0199	2,527,624	\$ 50,300
VNS13079	Variable	\$/kWh	\$0.0020	6,258,929	\$ 12,518
VNS13080	Variable	\$/kWh	\$0.0006	33,637,667	\$ 20,183
VNS13081	Variable	\$/kWh	\$0.0008	50,343,633	\$ 41,080
VNS13082	Variable	\$/kWh	\$-	2,120	\$-
VNS13083	Variable	\$/kWh	\$-	27,775,114	\$-
VNS13084	Variable	\$/kWh	\$-	29,365,660	\$-
VNS13085	Variable	\$/kWh	\$-	31,326	\$-
VNS13086	Variable	\$/kWh	\$0.0048	-	\$-