



Gas Distribution Services Default Price-Quality Path  
Determination 2013

# **Compliance Statement**

**10 December 2015**

Assessment period ending 30 September 2015

**Table of Contents**

- 1. Introduction..... 3
  - 1.1. Background..... 3
  - 1.2. Statement of compliance ..... 3
  - 1.3. Disclaimer ..... 3
- 2. Price Path..... 5
  - 2.1. Introduction..... 5
  - 2.2. Price path (clause 8 of the Determination) ..... 5
  - 2.3. Pass-through and recoverable costs ..... 6
  - 2.4. Restructuring of prices ..... 7
- 3. Quality standards ..... 9
  - 3.1. Introduction..... 9
  - 3.2. RTE results for the assessment period ..... 9
  - 3.3. Exclusions ..... 9
  - 3.4. Policies and procedures for recording the RTE statistics ..... 10
- 4. Appendices ..... 12

## 1. INTRODUCTION

### 1.1. Background

- 1.1.1. This Compliance Statement ("the Statement") is submitted by Vector Limited ("Vector") pursuant to *clause 11* of the Gas Distribution Services Default Price-Quality Path Determination 2013 ("the Determination").
- 1.1.2. The Determination is issued pursuant to Part 4 of the Commerce Act 1986 and requires Gas Distribution Businesses ("GDBs") to provide information to the Commission relevant to the assessment of their performance against the price path and quality standards.
- 1.1.3. Under *clause 8* of the Determination a GDB's notional revenue must not exceed the allowable notional revenue during the current assessment period.
- 1.1.4. Under *clause 9* of the Determination a GDB must comply with the annual quality assessment formula for Response Time to Emergencies ("RTE") over the current assessment period.
- 1.1.5. The Statement has been prepared on 10 December 2015. In the Statement, references to Vector relate only to Vector's gas distribution business.

### 1.2. Statement of compliance

- 1.2.1. As required by *clause 11.2(a)* of the Determination, this Statement confirms Vector's compliance with the price path in *clause 8* and the quality standards in *clause 9* in respect of the assessment period ending on 30 September 2015.
- 1.2.2. With reference to *clause 11.5* of the Determination, this statement confirms that *clause 10* did not apply in respect of the assessment period ending on 30 September 2015.

### 1.3. Disclaimer

- 1.3.1. The information contained in the Statement has been prepared for the express purpose of complying with the requirements of *clause 11* of the Determination. The Statement has not been prepared for any other purpose.

Vector expressly disclaims any liability to any other party who may rely on the Statement for any other purpose.

- 1.3.2. For presentation purposes some numbers in the Statement have been rounded. This may cause small discrepancies or rounding inconsistencies when aggregating some of the information presented in the Statement. These discrepancies do not affect the overall compliance calculations which are based on the more detailed information.

## 2. PRICE PATH

### 2.1. Introduction

2.1.1. In this section Vector demonstrates that it has complied with the price path requirements in clause 8 of the Determination. Vector has provided information to support the statement of compliance including:

- a) the amount of allowable notional revenue, the amount of notional revenue, prices, quantities, units of measurement associated with all numeric data and other relevant data, information and calculations;
- b) the amount of pass-through costs and recoverable costs that were used to calculate allowable notional revenue and notional revenue, the supporting data, information, and calculations used to determine those amounts, including when each pass-through cost and recoverable cost amount was paid and the period to which those costs relate.

### 2.2. Price path (clause 8 of the Determination)

2.2.1. As required by clause 8 of the Determination, in order to demonstrate compliance with the price path, GDBs must demonstrate that their notional revenue during the assessment period has not exceeded the allowable notional revenue for the assessment period. The current assessment period is the second assessment period and covers the 12 months to 30 September 2015.

2.2.2. Vector complies with the price path for the second assessment period, in accordance with clause 8.4(b) of the Determination:

$$ANR_{2015} \geq NR_{2015}$$

$$\$70,887,828 \geq \$70,845,177$$

2.2.3. Vector has calculated allowable notional revenue for the 2015 pricing period in accordance with Schedule 4, Equation 3 of the Determination:

$$ANR_t = (\sum P_{i,t-1} Q_{i,t-2} - (K_{t-1} + V_{t-1}) + (ANR_{t-1} - NR_{t-1}))(1 + \Delta CPI_t)(1 - X)$$

$$ANR_{2015} = (\sum P_{i,2014} Q_{i,2013} - (K_{2014} + V_{2014}) + (ANR_{2014} - NR_{2014}))(1 + \Delta CPI_{2015})(1 - X)$$

$$ANR_{2015} = (\$66,811,239 - (\$1,623,557 + \$0) +$$

$$(\$69,891,427 - \$65,102,974))(1 + 0.0130)(1 - 0)$$

$$ANR_{2015} = \$70,887,828$$

- a) Details of  $\sum P_{i,2014}Q_{i,2013}$  are included in Appendices 7 to 12.
- b)  $K_{2014}$  are as disclosed in Vector's 2014 Compliance Statement<sup>1</sup> and in Section 2.3.2.
- c)  $V_{2014}$  are as disclosed in Vector's 2014 Compliance Statement<sup>1</sup> and in Section 2.3.3.
- d)  $ANR_{2014}$  and  $NR_{2014}$  are as disclosed in Vector's 2014 Compliance Statement<sup>1</sup>.
- e) Details of  $\Delta CPI_{2015}$  are included in Appendix 13.
- f)  $X$  is the rate of change as specified in *Schedule 2* of the Determination.

2.2.4. Vector has calculated notional revenue for the 2015 pricing period in accordance with Clause 8.5(a) of the Determination

$$NR_t = \sum P_{i,t}Q_{i,t-2} - (K_t + V_t)$$

$$NR_{2015} = \sum P_{2015}Q_{i,2013} - (K_{2015} + V_{2015})$$

$$NR_{2015} = \$73,678,564 - (\$2,833,387 + \$0)$$

$$NR_{2015} = \$70,845,177$$

- a) Details of  $\sum P_{i,2015}Q_{i,2013}$  are included in Appendices 1 to 6.
- b) Details of  $K_{2015}$  are included in Section 2.3.2.
- c) Details of  $V_{2015}$  are included in Section 2.3.3.

2.2.5. Information relating to prices including all relevant quantities and units of measurement is included in Appendices 1 to 12.

## 2.3. Pass-through and recoverable costs

2.3.1. Vector's notional revenue includes the recovery of a number of pass-through costs for the 2015 assessment period. Vector's allowable notional revenue is calculated using a number of pass-through costs for the 2014 assessment period as disclosed in Vector's published PY2014 compliance statement.

---

<sup>1</sup> Vector's 2014 Compliance Statement published at:  
<http://vector.co.nz/disclosures/gas/price-quality>

These costs have been determined in accordance with Schedule 5 of the Determination.

- 2.3.2. Table 1 below provides a summary of pass-through costs that were used to calculate notional revenue and allowable notional revenue. Further supporting data, information and calculations used to determine these amounts, including when each pass-through costs was paid, and the period to which those costs relate is provided in Appendix 14.

*Table 1: Pass-through costs*

<b>Pass-through Cost</b>	<b>K<sub>2014</sub></b>	<b>K<sub>2015</sub></b>
<b>Commerce Commission Levies</b>	<b>\$340,362</b>	<b>\$468,345</b>
Auckland		\$326,865
North Island		\$141,479
<b>Electricity and Gas Complaints Commissioner Levies</b>	<b>\$35,418</b>	<b>\$58,080</b>
Auckland		\$40,535
North Island		\$17,545
<b>Council Rates</b>	<b>\$1,247,777</b>	<b>\$2,306,963</b>
Auckland		\$2,245,018
North Island		\$61,944
<b>Total</b>	<b>\$1,623,557</b>	<b>\$2,833,387</b>

- 2.3.3. There are no recoverable costs applicable to Vector during the 2014 or 2015 assessment periods, and therefore none recovered.

## **2.4. Restructuring of prices**

- 2.4.1. Vector has restructured the prices that apply during the 2015 pricing period.
- 2.4.2. On 1 July 2015, Vector changed the allocation of 4500 connections from the North Island network to the Auckland network to better reflect the geographical boundaries of our networks. As a result these connections were moved by Vector from consumer groups on the North Island network to equivalent consumer groups on the Auckland network.
- 2.4.3. The price categories for these 4500 ICPs changed from the appropriate price category on the North Island network to the equivalent price category on the Auckland network, noting that corresponding prices and structure of prices on both networks are identical (see Table 2 below).

2.4.4. As there is no change in the structure of prices, there are quantities for the pricing period ending two years prior that reasonably relate to the restructured prices. The provisions of Section 11.4(b) of the Determination are therefore not required.

2.4.5. For the avoidance of doubt, the change in the allocation of these *ICPs* between networks *does not* affect Vector's compliance position.

*Table 2: ICPs moved from the North Island network to the Auckland network*

Number of ICPs	Old Price Category	New Price Category	Quantities from PY2013		Price from 1 Oct 2014		Price from 1 Jul 2015	
			Fixed (Days)	Variable (kWh)	Fixed (\$/day)	Variable (\$/kWh)	Fixed (\$/day)	Variable (\$/kWh)
4388	GN0R	GA0R	1,160,291	14,679,111	0.33	0.0261	0.33	0.0261
56	GN01	GA01	15,541	955,584	0.57	0.0172	0.57	0.0172
62	GN02	GA02	20,025	2,843,832	1.01	0.0133	1.01	0.0133
31	GN03	GA03	7,738	14,945,676	4.35	0.0102	4.35	0.0102
0	GN04	GA04	0	0	13.35	0.0068	13.35	0.0068
11	Non-standard	Non-standard	As per individual contract					



## 3. QUALITY STANDARDS

### 3.1. Introduction

3.1.1. In this section Vector demonstrates that it has complied with the quality standards, *clause 9* of the Determination. Vector has provided information to support the statement of compliance including: relevant incident data and calculations, a description of the policies and procedures used for recording RTE statistics and a statement confirming Vector has not excluded any RTE values over the assessment period.

### 3.2. RTE results for the assessment period

3.2.1. Vector's RTE results for the assessment period are:

1.  $\frac{RTE_{60}}{RTE_t} = \frac{153}{160} = 0.956$
2.  $\frac{RTE_{180}}{(RTE_t - RTE_{excl})} = \frac{160}{(160 - 0)} = 1$

3.2.2. For the purposes of calculation the RTE values in paragraph 3.2.1 above:

- $RTE_t$  is the total number of emergencies in the assessment period;
- $RTE_{excl}$  is the total number of emergencies in the assessment period for which the Commission has granted an exclusion in writing;
- $RTE_{60}$  is the total number of emergencies in the assessment period where the GDB's RTE was less than or equal to 60 minutes; and
- $RTE_{180}$  is the total number of emergencies in the assessment period where the GDB's RTE was less than or equal to 180 minutes.

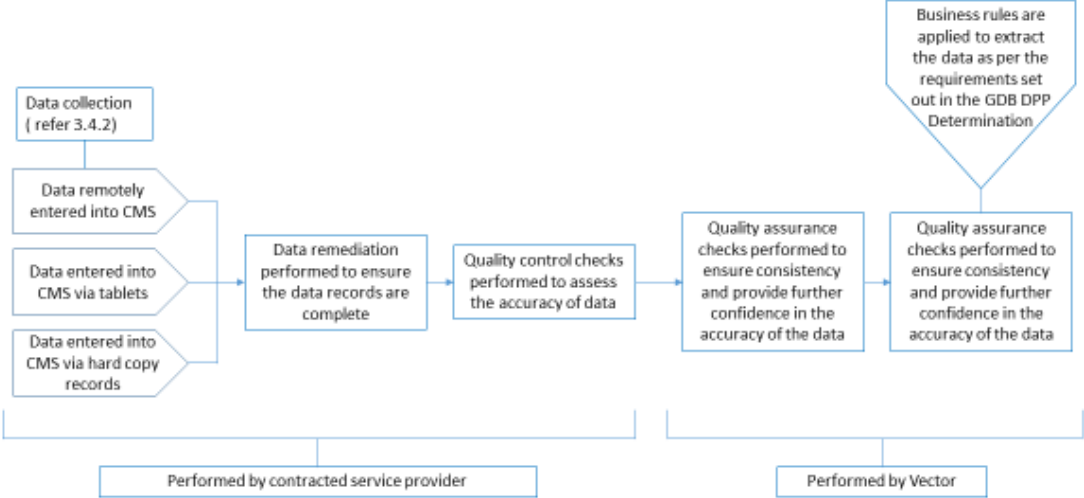
### 3.3. Exclusions

3.3.1. Vector can confirm that for this assessment period it did not have any emergencies that the Commission determined may be excluded from the RTE values, nor does Vector have any exclusion requests pending a decision by the Commission for the assessment period.

### **3.4. Policies and procedures for recording the RTE statistics**

- 3.4.1. Vector employs contracted service providers to undertake data capture activities within the gas distribution network. The service providers manage data in accordance with Vector's requirements as defined in the Vector standard GNS-0081 (standard for Gas Distribution Network Reliability, Integrity and Consumer Service).
- 3.4.2. Gas distribution network performance and consumer service data is captured by the service providers using three methods:
  1. Remotely, entered directly into Vector's Customer Management System (CMS).
  2. Electronically via hand-held tablets in the field. Data from the hand-held tablets is automatically uploaded into Vector's CMS.
  3. Hard copy (used only if the electronic data capture systems are not available), recorded on paper reports and subsequently entered into Vector's CMS with the paper reports scanned and entered as an attachment.
- 3.4.3. Data entered in Vector's CMS system by one of the above methods is then quality checked by the service provider for accuracy, prior to then undergoing additional quality assurance checks by Vector personnel.
- 3.4.4. RTE statistics are calculated (in line with the definition of RTE in the Determination) for each event and the data retained in the database for ongoing reporting and analysis.
- 3.4.5. RTE performance is monitored on a monthly basis. All RTE events taking longer than 60 minutes to respond to are investigated with the service providers.
- 3.4.6. Figure 1 below details the data collection, quality control / assurance and information development stages completed to generate the required information for disclosure.

Figure 1: data collection and information development process



## 4. APPENDICES

### Appendix 1: Summary of $P_{i,2015}Q_{i,2013}$ for the 2015 assessment period

	<i>P<sub>i,2015</sub>Q<sub>i,2013</sub></i>
<b>Sum</b>	<b>\$ 73,678,564</b>

	<i>P<sub>i,2015</sub>Q<sub>i,2013</sub></i>
Auckland published charges between 1 October 2014 to 30 September 2015	\$ 41,593,907
North Island published charges between 1 October 2014 to 30 September 2015	\$ 21,812,995
Auckland published charges between 1 October 2014 to 30 September 2015 - Scaling	\$ 112,054
Auckland non-standard charges between 1 October 2014 to 30 September 2015	\$ 6,769,338
North Island non-standard charges between 1 October 2014 to 30 September 2015	\$ 3,390,271

## Appendix 2: Auckland published charges from 1 October 2014

	<i>P<sub>i,2015</sub>Q<sub>i,2013</sub></i>
<b>Sum</b>	<b>\$ 41,593,907</b>

### Residential

Price category	Code	Description	Units	<i>P<sub>i,2015</sub></i>	<i>Q<sub>i,2013</sub></i>	<i>P<sub>i,2015</sub>Q<sub>i,2013</sub></i>
GA0R	GA0R-FIXD	Fixed	\$/day	\$ 0.3300	32,810,473	\$ 10,827,456
GA0R	GA0R-24UC	Variable	\$/kWh	\$ 0.0261	616,283,093	\$ 16,084,989

### Business

Price category	Code	Description	Units	<i>P<sub>i,2015</sub></i>	<i>Q<sub>i,2013</sub></i>	<i>P<sub>i,2015</sub>Q<sub>i,2013</sub></i>
GA01	GA01-FIXD	Fixed	\$/day	\$ 0.5700	834,172	\$ 475,478
GA01	GA01-24UC	Variable	\$/kWh	\$ 0.0172	59,199,584	\$ 1,018,233

### Commercial

Price category	Code	Description	Units	<i>P<sub>i,2015</sub></i>	<i>Q<sub>i,2013</sub></i>	<i>P<sub>i,2015</sub>Q<sub>i,2013</sub></i>
GA02	GA02-FIXD	Fixed	\$/day	\$ 1.0100	901,346	\$ 910,359
GA02	GA02-24UC	Variable	\$/kWh	\$ 0.0133	224,049,947	\$ 2,979,864
GA03	GA03-FIXD	Fixed	\$/day	\$ 4.3500	315,648	\$ 1,373,069
GA03	GA03-24UC	Variable	\$/kWh	\$ 0.0102	491,654,286	\$ 5,014,874

### Industrial

Price category	Code	Description	Units	<i>P<sub>i,2015</sub></i>	<i>Q<sub>i,2013</sub></i>	<i>P<sub>i,2015</sub>Q<sub>i,2013</sub></i>
GA04	GA04-FIXD	Fixed	\$/day	\$ 13.3500	42,363	\$ 565,546
GA04	GA04-24UC	Variable	\$/kWh	\$ 0.0068	344,711,550	\$ 2,344,039

### Appendix 3: North Island published charges from 1 October 2014

	<i>P<sub>i,2015</sub>Q<sub>i,2013</sub></i>
<b>Sum</b>	<b>\$ 21,812,995</b>

#### Residential

Price category	Code	Description	Units	<i>P<sub>i,2015</sub></i>	<i>Q<sub>i,2013</sub></i>	<i>P<sub>i,2015</sub>Q<sub>i,2013</sub></i>
GN0R	GN0R-FIXD	Fixed	\$/day	\$ 0.3300	20,666,362	\$ 6,819,899
GN0R	GN0R-24UC	Variable	\$/kWh	\$ 0.0261	333,405,066	\$ 8,701,872

#### Business

Price category	Code	Description	Units	<i>P<sub>i,2015</sub></i>	<i>Q<sub>i,2013</sub></i>	<i>P<sub>i,2015</sub>Q<sub>i,2013</sub></i>
GN01	GN01-FIXD	Fixed	\$/day	\$ 0.5700	754,062	\$ 429,815
GN01	GN01-24UC	Variable	\$/kWh	\$ 0.0172	43,902,517	\$ 755,123

#### Commercial

Price category	Code	Description	Units	<i>P<sub>i,2015</sub></i>	<i>Q<sub>i,2013</sub></i>	<i>P<sub>i,2015</sub>Q<sub>i,2013</sub></i>
GN02	GN02-FIXD	Fixed	\$/day	\$ 1.0100	462,576	\$ 467,202
GN02	GN02-24UC	Variable	\$/kWh	\$ 0.0133	108,874,738	\$ 1,448,034
GN03	GN03-FIXD	Fixed	\$/day	\$ 4.3500	172,700	\$ 751,245
GN03	GN03-24UC	Variable	\$/kWh	\$ 0.0102	174,209,720	\$ 1,776,939

#### Industrial

Price plan	Code	Description	Units	<i>P<sub>i,2015</sub></i>	<i>Q<sub>i,2013</sub></i>	<i>P<sub>i,2015</sub>Q<sub>i,2013</sub></i>
GN04	GN04-FIXD	Fixed	\$/day	\$ 13.3500	13,764	\$ 183,749
GN04	GN04-24UC	Variable	\$/kWh	\$ 0.0068	70,458,105	\$ 479,115

## Appendix 4: Auckland network – 2015 scaling

				<i>P<sub>i,2015</sub>Q<sub>i,2013</sub></i>		
<b>Sum</b>				<b>\$ 112,054</b>		
Price category	Code	Description	Units	<i>P<sub>i,2015</sub></i>	<i>Q<sub>i,2013</sub></i>	<i>P<sub>i,2015</sub>Q<sub>i,2013</sub></i>
GA0R	GA0R-24UC	Variable	\$/kWh	\$ 0.0261	2,872,631	\$ 74,976
GA01	GA01-24UC	Variable	\$/kWh	\$ 0.0172	240,509	\$ 4,137
GA02	GA02-24UC	Variable	\$/kWh	\$ 0.0133	794,410	\$ 10,566
GA03	GA03-24UC	Variable	\$/kWh	\$ 0.0102	1,710,188	\$ 17,444
GA04	GA04-24UC	Variable	\$/kWh	\$ 0.0068	725,276	\$ 4,932

## Appendix 5: Auckland non-standard charges from 1 October 2014

	<i>P<sub>i,2015</sub> Q<sub>i,2013</sub></i>
<b>Sum</b>	<b>\$ 6,769,338</b>

Code	Description	Units	<i>P<sub>i,2015</sub></i>	<i>Q<sub>i,2013</sub></i>	<i>P<sub>i,2015</sub> Q<sub>i,2013</sub></i>
VTC15001	Fixed	\$/day	\$ 13.35	365	\$ 4,873
VTC15002	Fixed	\$/day	\$ 130.37	365	\$ 47,585
VTC15003	Fixed	\$/day	\$ 675.83	365	\$ 246,678
VTC15004	Fixed	\$/day	\$ 13.35	365	\$ 4,873
VTC15005	Fixed	\$/day	\$ 91.65	365	\$ 33,452
VTC15006	Fixed	\$/day	\$ 355.58	365	\$ 129,787
VTC15007	Fixed	\$/day	\$ 78.15	365	\$ 28,525
VTC15008	Fixed	\$/day	\$ 13.35	365	\$ 4,873
VTC15009	Fixed	\$/day	\$ 65.95	365	\$ 24,072
VTC15010	Fixed	\$/day	\$ 83.88	365	\$ 30,616
VTC15011	Fixed	\$/day	\$ 108.12	365	\$ 39,464
VTC15012	Fixed	\$/day	\$ 13.35	365	\$ 4,873
VTC15013	Fixed	\$/day	\$ 4.35	365	\$ 1,588
VTC15014	Fixed	\$/day	\$ 208.16	365	\$ 75,978
VTC15015	Fixed	\$/day	\$ -	3	\$ -
VTC15016	Fixed	\$/day	\$ 113.88	365	\$ 41,566
VTC15017	Fixed	\$/day	\$ 185.58	365	\$ 67,737
VTC15018	Fixed	\$/day	\$ 242.74	365	\$ 88,600
VTC15019	Fixed	\$/day	\$ 37.94	365	\$ 13,848
VTC15020	Fixed	\$/day	\$ 49.38	365	\$ 18,024
VTC15021	Fixed	\$/day	\$ 215.42	365	\$ 78,628
VTC15022	Fixed	\$/day	\$ 24.38	365	\$ 8,899
VTC15023	Fixed	\$/day	\$ 13.35	365	\$ 4,873
VTC15024	Fixed	\$/day	\$ 4.35	365	\$ 1,588
VTC15025	Fixed	\$/day	\$ 150.87	365	\$ 55,068
VTC15026	Fixed	\$/day	\$ 44.06	365	\$ 16,082
VTC15027	Fixed	\$/day	\$ 13.35	365	\$ 4,873
VTC15028	Fixed	\$/day	\$ 13.35	365	\$ 4,873
VTC15029	Fixed	\$/day	\$ 126.92	365	\$ 46,326
VTC15030	Fixed	\$/day	\$ 742.85	365	\$ 271,140
VTC15031	Fixed	\$/day	\$ 4.35	365	\$ 1,588
VTC15032	Fixed	\$/day	\$ 477.03	365	\$ 174,116
VTC15033	Fixed	\$/day	\$ 13.35	365	\$ 4,873
VTC15034	Fixed	\$/day	\$ 13.35	365	\$ 4,873
VTC15035	Fixed	\$/day	\$ 13.35	365	\$ 4,873
VTC15036	Fixed	\$/day	\$ 13.35	365	\$ 4,873
VTC15037	Fixed	\$/day	\$ 13.35	365	\$ 4,873
VTC15038	Fixed	\$/day	\$ 13.35	365	\$ 4,873
VTC15039	Fixed	\$/day	\$ 13.35	365	\$ 4,873
VTC15040	Fixed	\$/day	\$ 102.03	365	\$ 37,241
VTC15041	Fixed	\$/day	\$ 1,995.01	365	\$ 728,179
VTC15042	Fixed	\$/day	\$ 4.35	365	\$ 1,588
VTC15043	Fixed	\$/day	\$ 13.35	365	\$ 4,873
VTC15044	Fixed	\$/day	\$ 101.94	365	\$ 37,208
VTC15045	Fixed	\$/day	\$ 13.35	365	\$ 4,873
VTC15046	Fixed	\$/day	\$ 13.35	365	\$ 4,873



Code	Description	Units	$P_{i,2015}$	$Q_{i,2013}$	$P_{i,2015}Q_{i,2013}$
VTC15047	Fixed	\$/day	\$ 36.36	365	\$ 13,271
VTC15048	Fixed	\$/day	\$ 13.35	365	\$ 4,873
VTC15049	Fixed	\$/day	\$ 4.35	365	\$ 1,588
VTC15050	Fixed	\$/day	\$ 147.86	365	\$ 53,969
VTC15051	Fixed	\$/day	\$ 4.35	365	\$ 1,588
VTC15052	Fixed	\$/day	\$ 4.35	365	\$ 1,588
VTC15053	Fixed	\$/day	\$ 4.35	365	\$ 1,588
VTC15054	Fixed	\$/day	\$ 53.92	365	\$ 19,681
VTC15055	Fixed	\$/day	\$ 72.95	365	\$ 26,627
VTC15056	Fixed	\$/day	\$ 39.40	365	\$ 14,381
VTC15057	Fixed	\$/day	\$ 261.59	365	\$ 95,480
VTC15058	Fixed	\$/day	\$ 13.35	365	\$ 4,873
VTC15059	Fixed	\$/day	\$ 134.77	365	\$ 49,191
VTC15060	Fixed	\$/day	\$ 131.88	365	\$ 48,136
VTC15061	Fixed	\$/day	\$ 4.35	365	\$ 1,588
VTC15062	Fixed	\$/day	\$ 102.03	365	\$ 37,241
VTC15063	Fixed	\$/day	\$ 25.42	365	\$ 9,278
VTC15064	Fixed	\$/day	\$ 102.03	365	\$ 37,241
VTC15065	Fixed	\$/day	\$ -	135	\$ -
VTC15066	Fixed	\$/day	\$ 13.35	365	\$ 4,873
VTC15067	Fixed	\$/day	\$ 13.35	365	\$ 4,873
VTC15068	Fixed	\$/day	\$ 13.35	365	\$ 4,873
VTC15069	Fixed	\$/day	\$ 13.35	365	\$ 4,873
VTC15070	Fixed	\$/day	\$ 4.35	365	\$ 1,588
VTC15071	Fixed	\$/day	\$ 13.35	365	\$ 4,873
VTC15072	Fixed	\$/day	\$ 4.35	365	\$ 1,588
VTC15073	Fixed	\$/day	\$ 102.03	365	\$ 37,241
VTC15074	Fixed	\$/day	\$ 13.35	365	\$ 4,873
VTC15075	Fixed	\$/day	\$ 204.91	365	\$ 74,792
VTC15076	Fixed	\$/day	\$ 254.78	365	\$ 92,995
VTC15077	Fixed	\$/day	\$ 12.20	365	\$ 4,453
VTC15078	Fixed	\$/day	\$ 1.01	365	\$ 369
VTC15079	Fixed	\$/day	\$ 177.91	365	\$ 64,937
VTC15080	Fixed	\$/day	\$ 13.35	365	\$ 4,873
VTC15081	Fixed	\$/day	\$ 330.39	365	\$ 120,592
VTC15082	Fixed	\$/day	\$ 64.83	365	\$ 23,663
VTC15083	Fixed	\$/day	\$ 13.35	365	\$ 4,873
VTC15084	Fixed	\$/day	\$ 13.35	365	\$ 4,873
VTC15085	Fixed	\$/day	\$ 271.59	224	\$ 60,836
VTC15086	Fixed	\$/day	\$ 2,090.42	-	\$ -
VTC15087	Fixed	\$/day	\$ 534.84	365	\$ 195,217
VTC15088	Fixed	\$/day	\$ 1,024.85	-	\$ -
VTC15089	Fixed	\$/day	\$ -	50	\$ -
VTC15090	Fixed	\$/day	\$ -	315	\$ -
VTC15091	Fixed	\$/day	\$ 157.10	300	\$ 47,130
VTC15092	Fixed	\$/day	\$ -	65	\$ -
VTC15093	Fixed	\$/day	\$ 4.35	9	\$ 39
VTC15094	Fixed	\$/day	\$ -	356	\$ -
VTC15095	Fixed	\$/day	\$ 1.01	238	\$ 240

Code	Description	Units	$P_{i,2015}$	$Q_{i,2013}$	$P_{i,2015} Q_{i,2013}$
VTC15096	Fixed	\$/day	\$ -	127	\$ -
VTC15097	Fixed	\$/day	\$ 13.35	115	\$ 1,535
VTC15098	Fixed	\$/day	\$ -	250	\$ -
VTC15099	Fixed	\$/day	\$ 109.30	365	\$ 39,895
VTC15100	Fixed	\$/day	\$ 383.60	365	\$ 140,014
VTC15101	Fixed	\$/day	\$ 337.97	365	\$ 123,359
VTC15102	Fixed	\$/day	\$ 13.35	365	\$ 4,873
VTC15103	Fixed	\$/day	\$ 124.63	365	\$ 45,490
VTC15104	Fixed	\$/day	\$ 13.35	365	\$ 4,873
VTC15105	Fixed	\$/day	\$ 13.35	365	\$ 4,873
VTC15106	Fixed	\$/day	\$ 172.68	365	\$ 63,028
VTC15107	Fixed	\$/day	\$ -	365	\$ -
VTC15108	Fixed	\$/day	\$ 102.78	365	\$ 37,515
VTC15109	Fixed	\$/day	\$ 26.85	-	\$ -

Code	Description	Units	$P_{i,2015}$	$Q_{i,2013}$	$P_{i,2015} Q_{i,2013}$
VTC15001	Variable	\$/kWh	\$ 0.0068	7,185,370	\$ 48,861
VTC15002	Variable	\$/kWh	\$ 0.0004	23,584,124	\$ 9,434
VTC15003	Variable	\$/kWh	\$ 0.0002	345,083,090	\$ 69,017
VTC15004	Variable	\$/kWh	\$ 0.0068	1,796,814	\$ 12,218
VTC15005	Variable	\$/kWh	\$ 0.0010	8,121,042	\$ 8,121
VTC15006	Variable	\$/kWh	\$ 0.0007	46,361,521	\$ 32,453
VTC15007	Variable	\$/kWh	\$ 0.0007	9,324,615	\$ 6,527
VTC15008	Variable	\$/kWh	\$ 0.0068	9,550,594	\$ 64,944
VTC15009	Variable	\$/kWh	\$ -	2,595,394	\$ -
VTC15010	Variable	\$/kWh	\$ -	7,316,234	\$ -
VTC15011	Variable	\$/kWh	\$ 0.0010	9,539,478	\$ 9,539
VTC15012	Variable	\$/kWh	\$ 0.0068	18,987,047	\$ 129,112
VTC15013	Variable	\$/kWh	\$ 0.0102	783,199	\$ 7,989
VTC15014	Variable	\$/kWh	\$ 0.0008	30,425,154	\$ 24,340
VTC15015	Variable	\$/kWh	\$ -	1,980	\$ -
VTC15016	Variable	\$/kWh	\$ 0.0033	28,142,197	\$ 92,869
VTC15017	Variable	\$/kWh	\$ 0.0010	18,863,949	\$ 18,864
VTC15018	Variable	\$/kWh	\$ 0.0010	24,802,855	\$ 24,803
VTC15019	Variable	\$/kWh	\$ -	2,079,159	\$ -
VTC15020	Variable	\$/kWh	\$ 0.0009	4,374,049	\$ 3,937
VTC15021	Variable	\$/kWh	\$ 0.0006	39,146,401	\$ 23,488
VTC15022	Variable	\$/kWh	\$ 0.0004	3,312,680	\$ 1,325
VTC15023	Variable	\$/kWh	\$ 0.0068	34,786,812	\$ 236,550
VTC15024	Variable	\$/kWh	\$ 0.0102	2,863,879	\$ 29,212
VTC15025	Variable	\$/kWh	\$ 0.0004	32,219,806	\$ 12,888
VTC15026	Variable	\$/kWh	\$ 0.0008	4,893,163	\$ 3,915
VTC15027	Variable	\$/kWh	\$ 0.0068	1,878,464	\$ 12,774
VTC15028	Variable	\$/kWh	\$ 0.0068	11,666,177	\$ 79,330
VTC15029	Variable	\$/kWh	\$ 0.0011	9,505,704	\$ 10,456
VTC15030	Variable	\$/kWh	\$ 0.0012	58,474,428	\$ 70,169
VTC15031	Variable	\$/kWh	\$ 0.0102	5,004,639	\$ 51,047
VTC15032	Variable	\$/kWh	\$ 0.0004	94,943,552	\$ 37,977
VTC15033	Variable	\$/kWh	\$ 0.0068	3,867,185	\$ 26,297
VTC15034	Variable	\$/kWh	\$ 0.0068	3,591,905	\$ 24,425
VTC15035	Variable	\$/kWh	\$ 0.0068	21,668,329	\$ 147,345

Code	Description	Units	$P_{i,2015}$	$Q_{i,2013}$	$P_{i,2015}Q_{i,2013}$
VTC15036	Variable	\$/kWh	\$ 0.0068	6,529,340	\$ 44,400
VTC15037	Variable	\$/kWh	\$ 0.0068	2,554,911	\$ 17,373
VTC15038	Variable	\$/kWh	\$ 0.0068	3,047,841	\$ 20,725
VTC15039	Variable	\$/kWh	\$ 0.0068	2,917,864	\$ 19,841
VTC15040	Variable	\$/kWh	\$ 0.0010	91,712	\$ 92
VTC15041	Variable	\$/kWh	\$ -	132,535,126	\$ -
VTC15042	Variable	\$/kWh	\$ 0.0102	858,870	\$ 8,760
VTC15043	Variable	\$/kWh	\$ 0.0068	4,449,210	\$ 30,255
VTC15044	Variable	\$/kWh	\$ 0.0012	8,030,622	\$ 9,637
VTC15045	Variable	\$/kWh	\$ 0.0068	14,385,122	\$ 97,819
VTC15046	Variable	\$/kWh	\$ 0.0068	9,837,405	\$ 66,894
VTC15047	Variable	\$/kWh	\$ 0.0010	3,888,258	\$ 3,888
VTC15048	Variable	\$/kWh	\$ 0.0068	4,762,928	\$ 32,388
VTC15049	Variable	\$/kWh	\$ 0.0102	3,276,251	\$ 33,418
VTC15050	Variable	\$/kWh	\$ 0.0007	21,841,175	\$ 15,289
VTC15051	Variable	\$/kWh	\$ 0.0102	368,708	\$ 3,761
VTC15052	Variable	\$/kWh	\$ 0.0102	603,000	\$ 6,151
VTC15053	Variable	\$/kWh	\$ 0.0102	1,264,397	\$ 12,897
VTC15054	Variable	\$/kWh	\$ 0.0013	4,112,849	\$ 5,347
VTC15055	Variable	\$/kWh	\$ 0.0010	6,506,116	\$ 6,506
VTC15056	Variable	\$/kWh	\$ 0.0009	3,712,590	\$ 3,341
VTC15057	Variable	\$/kWh	\$ 0.0011	19,861,716	\$ 21,848
VTC15058	Variable	\$/kWh	\$ 0.0068	523,761	\$ 3,562
VTC15059	Variable	\$/kWh	\$ 0.0007	19,343,901	\$ 13,541
VTC15060	Variable	\$/kWh	\$ 0.0010	11,557,686	\$ 11,558
VTC15061	Variable	\$/kWh	\$ 0.0102	620,585	\$ 6,330
VTC15062	Variable	\$/kWh	\$ 0.0010	37,631,763	\$ 37,632
VTC15063	Variable	\$/kWh	\$ 0.0008	3,044,745	\$ 2,436
VTC15064	Variable	\$/kWh	\$ 0.0010	14,460,788	\$ 14,461
VTC15065	Variable	\$/kWh	\$ -	-	\$ -
VTC15066	Variable	\$/kWh	\$ 0.0068	4,154,855	\$ 28,253
VTC15067	Variable	\$/kWh	\$ 0.0068	1,855,341	\$ 12,616
VTC15068	Variable	\$/kWh	\$ 0.0068	782,498	\$ 5,321
VTC15069	Variable	\$/kWh	\$ 0.0068	19,555,638	\$ 132,978
VTC15070	Variable	\$/kWh	\$ 0.0102	3,302,274	\$ 33,683
VTC15071	Variable	\$/kWh	\$ 0.0068	5,642,418	\$ 38,368
VTC15072	Variable	\$/kWh	\$ 0.0102	4,853,075	\$ 49,501
VTC15073	Variable	\$/kWh	\$ 0.0010	15,424,194	\$ 15,424
VTC15074	Variable	\$/kWh	\$ 0.0068	4,658,892	\$ 31,680
VTC15075	Variable	\$/kWh	\$ 0.0009	20,958,731	\$ 18,863
VTC15076	Variable	\$/kWh	\$ 0.0008	31,320,745	\$ 25,057
VTC15077	Variable	\$/kWh	\$ 0.0023	469,216	\$ 1,079
VTC15078	Variable	\$/kWh	\$ 0.0133	764,187	\$ 10,164
VTC15079	Variable	\$/kWh	\$ 0.0010	17,337,788	\$ 17,338
VTC15080	Variable	\$/kWh	\$ 0.0068	5,141,001	\$ 34,959
VTC15081	Variable	\$/kWh	\$ -	30,419,369	\$ -
VTC15082	Variable	\$/kWh	\$ 0.0008	6,964,174	\$ 5,571
VTC15083	Variable	\$/kWh	\$ 0.0068	2,821,931	\$ 19,189
VTC15084	Variable	\$/kWh	\$ 0.0068	13,436,739	\$ 91,370
VTC15085	Variable	\$/kWh	\$ -	496,494	\$ -

Code	Description	Units	$P_{i,2015}$	$Q_{i,2013}$	$P_{i,2015} Q_{i,2013}$
VTC15086	Variable	\$/kWh	\$ -	-	\$ -
VTC15087	Variable	\$/kWh	\$ 0.0004	122,967,210	\$ 49,187
VTC15088	Variable	\$/kWh	\$ -	-	\$ -
VTC15089	Variable	\$/kWh	\$ -	405,327	\$ -
VTC15090	Variable	\$/kWh	\$ -	2,171,674	\$ -
VTC15091	Variable	\$/kWh	\$ 0.0006	24,976,504	\$ 14,986
VTC15092	Variable	\$/kWh	\$ -	5,929,519	\$ -
VTC15093	Variable	\$/kWh	\$ 0.0102	16,772	\$ 171
VTC15094	Variable	\$/kWh	\$ -	638,904	\$ -
VTC15095	Variable	\$/kWh	\$ 0.0133	-	\$ -
VTC15096	Variable	\$/kWh	\$ -	-	\$ -
VTC15097	Variable	\$/kWh	\$ 0.0068	2,740,225	\$ 18,634
VTC15098	Variable	\$/kWh	\$ -	5,303,866	\$ -
VTC15099	Variable	\$/kWh	\$ 0.0002	56,573,967	\$ 11,315
VTC15100	Variable	\$/kWh	\$ -	37,986,488	\$ -
VTC15101	Variable	\$/kWh	\$ -	42,775,729	\$ -
VTC15102	Variable	\$/kWh	\$ 0.0068	5,009,574	\$ 34,065
VTC15103	Variable	\$/kWh	\$ 0.0008	10,537,129	\$ 8,430
VTC15104	Variable	\$/kWh	\$ 0.0068	7,866,015	\$ 53,489
VTC15105	Variable	\$/kWh	\$ 0.0068	4,685,900	\$ 31,864
VTC15106	Variable	\$/kWh	\$ -	18,184,872	\$ -
VTC15107	Variable	\$/kWh	\$ -	30,720	\$ -
VTC15108	Variable	\$/kWh	\$ 0.0003	34,114,932	\$ 10,234
VTC15109	Variable	\$/kWh	\$ -	-	\$ -

## Appendix 6: North Island non-standard charges from 1 October 2014

	<i>P<sub>i,2015</sub> Q<sub>i,2013</sub></i>
<b>Sum</b>	<b>\$ 3,390,271</b>

Code	Description	Units	<i>P<sub>i,2015</sub></i>	<i>Q<sub>i,2013</sub></i>	<i>P<sub>i,2015</sub> Q<sub>i,2013</sub></i>
VTC15110	Fixed	\$/day	\$ 13.35	365	\$ 4,873
VTC15111	Fixed	\$/day	\$ 13.35	365	\$ 4,873
VTC15112	Fixed	\$/day	\$ 4.35	365	\$ 1,588
VTC15113	Fixed	\$/day	\$ 13.35	365	\$ 4,873
VTC15114	Fixed	\$/day	\$ 4.35	365	\$ 1,588
VTC15115	Fixed	\$/day	\$ 13.35	365	\$ 4,873
VTC15116	Fixed	\$/day	\$ 13.35	365	\$ 4,873
VTC15117	Fixed	\$/day	\$ 13.35	365	\$ 4,873
VTC15118	Fixed	\$/day	\$ 333.29	365	\$ 121,651
VTC15119	Fixed	\$/day	\$ 13.35	365	\$ 4,873
VTC15120	Fixed	\$/day	\$ 4.35	365	\$ 1,588
VTC15121	Fixed	\$/day	\$ 13.35	365	\$ 4,873
VTC15122	Fixed	\$/day	\$ 53.82	365	\$ 19,644
VTC15123	Fixed	\$/day	\$ 88.80	365	\$ 32,412
VTC15124	Fixed	\$/day	\$ -	365	\$ -
VTC15125	Fixed	\$/day	\$ 26.31	365	\$ 9,603
VTC15126	Fixed	\$/day	\$ 13.35	365	\$ 4,873
VTC15127	Fixed	\$/day	\$ 167.47	365	\$ 61,127
VTC15128	Fixed	\$/day	\$ 160.60	365	\$ 58,619
VTC15129	Fixed	\$/day	\$ -	334	\$ -
VTC15130	Fixed	\$/day	\$ 13.35	365	\$ 4,873
VTC15131	Fixed	\$/day	\$ 317.52	365	\$ 115,895
VTC15132	Fixed	\$/day	\$ 342.64	365	\$ 125,064
VTC15133	Fixed	\$/day	\$ 13.35	365	\$ 4,873
VTC15134	Fixed	\$/day	\$ 13.35	365	\$ 4,873
VTC15135	Fixed	\$/day	\$ 13.35	365	\$ 4,873
VTC15136	Fixed	\$/day	\$ 4.35	365	\$ 1,588
VTC15137	Fixed	\$/day	\$ 13.35	365	\$ 4,873
VTC15138	Fixed	\$/day	\$ 111.71	365	\$ 40,774
VTC15139	Fixed	\$/day	\$ 50.35	365	\$ 18,378
VTC15140	Fixed	\$/day	\$ 13.35	365	\$ 4,873
VTC15141	Fixed	\$/day	\$ 67.91	365	\$ 24,787
VTC15142	Fixed	\$/day	\$ 4.35	365	\$ 1,588
VTC15143	Fixed	\$/day	\$ 4.35	365	\$ 1,588
VTC15144	Fixed	\$/day	\$ 47.48	365	\$ 17,330
VTC15145	Fixed	\$/day	\$ 13.35	365	\$ 4,873
VTC15146	Fixed	\$/day	\$ 4.35	365	\$ 1,588
VTC15147	Fixed	\$/day	\$ 216.63	365	\$ 79,070
VTC15148	Fixed	\$/day	\$ 4.35	365	\$ 1,588
VTC15149	Fixed	\$/day	\$ 13.35	365	\$ 4,873
VTC15150	Fixed	\$/day	\$ 13.35	365	\$ 4,873
VTC15151	Fixed	\$/day	\$ 252.96	365	\$ 92,330
VTC15152	Fixed	\$/day	\$ 383.47	365	\$ 139,967
VTC15153	Fixed	\$/day	\$ 13.35	365	\$ 4,873

Code	Description	Units	$P_{i,2015}$	$Q_{i,2013}$	$P_{i,2015}Q_{i,2013}$
VTC15154	Fixed	\$/day	\$ 13.35	365	\$ 4,873
VTC15155	Fixed	\$/day	\$ 66.90	365	\$ 24,419
VTC15156	Fixed	\$/day	\$ 4.35	365	\$ 1,588
VTC15157	Fixed	\$/day	\$ 31.80	365	\$ 11,607
VTC15158	Fixed	\$/day	\$ 13.35	365	\$ 4,873
VTC15159	Fixed	\$/day	\$ 13.35	365	\$ 4,873
VTC15160	Fixed	\$/day	\$ 13.35	365	\$ 4,873
VTC15161	Fixed	\$/day	\$ 13.35	365	\$ 4,873
VTC15162	Fixed	\$/day	\$ 13.35	365	\$ 4,873
VTC15163	Fixed	\$/day	\$ 4.35	365	\$ 1,588
VTC15164	Fixed	\$/day	\$ 13.35	365	\$ 4,873
VTC15165	Fixed	\$/day	\$ 4.35	365	\$ 1,588
VTC15166	Fixed	\$/day	\$ 4.35	365	\$ 1,588
VTC15167	Fixed	\$/day	\$ 13.35	365	\$ 4,873
VTC15168	Fixed	\$/day	\$ 4.35	365	\$ 1,588
VTC15169	Fixed	\$/day	\$ 13.35	365	\$ 4,873
VTC15170	Fixed	\$/day	\$ 4.35	365	\$ 1,588
VTC15171	Fixed	\$/day	\$ 4.35	365	\$ 1,588
VTC15172	Fixed	\$/day	\$ 92.00	365	\$ 33,580
VTC15173	Fixed	\$/day	\$ 13.35	365	\$ 4,873
VTC15174	Fixed	\$/day	\$ -	289	\$ -
VTC15175	Fixed	\$/day	\$ -	76	\$ -
VTC15176	Fixed	\$/day	\$ -	304	\$ -
VTC15177	Fixed	\$/day	\$ -	61	\$ -
VTC15178	Fixed	\$/day	\$ 4.35	340	\$ 1,479
VTC15179	Fixed	\$/day	\$ 13.35	25	\$ 334
VTC15180	Fixed	\$/day	\$ 13.35	218	\$ 2,910
VTC15181	Fixed	\$/day	\$ 13.35	147	\$ 1,962

Code	Description	Units	$P_{i,2015}$	$Q_{i,2013}$	$P_{i,2015}Q_{i,2013}$
VTC15110	Variable	\$/kWh	\$ 0.0068	1,843,315	\$ 12,535
VTC15111	Variable	\$/kWh	\$ 0.0068	5,254,430	\$ 35,730
VTC15112	Variable	\$/kWh	\$ 0.0102	4,256,789	\$ 43,419
VTC15113	Variable	\$/kWh	\$ 0.0068	1,712,225	\$ 11,643
VTC15114	Variable	\$/kWh	\$ 0.0102	2,846,322	\$ 29,032
VTC15115	Variable	\$/kWh	\$ 0.0068	5,059,368	\$ 34,404
VTC15116	Variable	\$/kWh	\$ 0.0068	5,387,545	\$ 36,635
VTC15117	Variable	\$/kWh	\$ 0.0068	6,805,211	\$ 46,275
VTC15118	Variable	\$/kWh	\$ -	20,764,045	\$ -
VTC15119	Variable	\$/kWh	\$ 0.0068	5,229,588	\$ 35,561
VTC15120	Variable	\$/kWh	\$ 0.0102	4,209,004	\$ 42,932
VTC15121	Variable	\$/kWh	\$ 0.0068	5,947,889	\$ 40,446
VTC15122	Variable	\$/kWh	\$ -	101,124,414	\$ -
VTC15123	Variable	\$/kWh	\$ -	86,190,794	\$ -
VTC15124	Variable	\$/kWh	\$ -	18,534,078	\$ -
VTC15125	Variable	\$/kWh	\$ -	56,804,013	\$ -
VTC15126	Variable	\$/kWh	\$ 0.0068	2,440,647	\$ 16,596
VTC15127	Variable	\$/kWh	\$ -	60,006,841	\$ -
VTC15128	Variable	\$/kWh	\$ -	163,321,602	\$ -
VTC15129	Variable	\$/kWh	\$ -	30,152,664	\$ -
VTC15130	Variable	\$/kWh	\$ 0.0068	5,598,562	\$ 38,070

Code	Description	Units	$P_{i,2015}$	$Q_{i,2013}$	$P_{i,2015}Q_{i,2013}$
VTC15131	Variable	\$/kWh	\$ -	46,860,582	\$ -
VTC15132	Variable	\$/kWh	\$ -	42,741,022	\$ -
VTC15133	Variable	\$/kWh	\$ 0.0068	7,333,410	\$ 49,867
VTC15134	Variable	\$/kWh	\$ 0.0068	5,280,505	\$ 35,907
VTC15135	Variable	\$/kWh	\$ 0.0068	3,743,089	\$ 25,453
VTC15136	Variable	\$/kWh	\$ 0.0102	2,063,963	\$ 21,052
VTC15137	Variable	\$/kWh	\$ 0.0068	8,291,514	\$ 56,382
VTC15138	Variable	\$/kWh	\$ -	152,142,679	\$ -
VTC15139	Variable	\$/kWh	\$ -	128,505,265	\$ -
VTC15140	Variable	\$/kWh	\$ 0.0068	27,811,349	\$ 189,117
VTC15141	Variable	\$/kWh	\$ -	11,010,289	\$ -
VTC15142	Variable	\$/kWh	\$ 0.0102	2,104,812	\$ 21,469
VTC15143	Variable	\$/kWh	\$ 0.0102	4,563,853	\$ 46,551
VTC15144	Variable	\$/kWh	\$ -	3,297,101	\$ -
VTC15145	Variable	\$/kWh	\$ 0.0068	4,622,263	\$ 31,431
VTC15146	Variable	\$/kWh	\$ 0.0102	2,869,418	\$ 29,268
VTC15147	Variable	\$/kWh	\$ -	17,178,390	\$ -
VTC15148	Variable	\$/kWh	\$ 0.0102	4,919,668	\$ 50,181
VTC15149	Variable	\$/kWh	\$ 0.0068	6,903,444	\$ 46,943
VTC15150	Variable	\$/kWh	\$ 0.0068	15,444,438	\$ 105,022
VTC15151	Variable	\$/kWh	\$ -	15,022,657	\$ -
VTC15152	Variable	\$/kWh	\$ -	30,717,458	\$ -
VTC15153	Variable	\$/kWh	\$ 0.0068	3,449,504	\$ 23,457
VTC15154	Variable	\$/kWh	\$ 0.0068	15,043,375	\$ 102,295
VTC15155	Variable	\$/kWh	\$ 0.0000	208,171,041	\$ 4,163
VTC15156	Variable	\$/kWh	\$ 0.0102	3,989,019	\$ 40,688
VTC15157	Variable	\$/kWh	\$ -	71,973,226	\$ -
VTC15158	Variable	\$/kWh	\$ 0.0068	6,441,888	\$ 43,805
VTC15159	Variable	\$/kWh	\$ 0.0068	5,908,163	\$ 40,176
VTC15160	Variable	\$/kWh	\$ 0.0068	4,881,496	\$ 33,194
VTC15161	Variable	\$/kWh	\$ 0.0068	12,045,248	\$ 81,908
VTC15162	Variable	\$/kWh	\$ 0.0068	3,451,960	\$ 23,473
VTC15163	Variable	\$/kWh	\$ 0.0102	4,705,484	\$ 47,996
VTC15164	Variable	\$/kWh	\$ 0.0068	1,921,982	\$ 13,069
VTC15165	Variable	\$/kWh	\$ 0.0102	3,755,895	\$ 38,310
VTC15166	Variable	\$/kWh	\$ 0.0102	1,798,169	\$ 18,341
VTC15167	Variable	\$/kWh	\$ 0.0068	15,270,721	\$ 103,841
VTC15168	Variable	\$/kWh	\$ 0.0102	3,843,163	\$ 39,200
VTC15169	Variable	\$/kWh	\$ 0.0068	1,928,447	\$ 13,113
VTC15170	Variable	\$/kWh	\$ 0.0102	4,014,628	\$ 40,949
VTC15171	Variable	\$/kWh	\$ 0.0102	3,083,760	\$ 31,454
VTC15172	Variable	\$/kWh	\$ 0.0006	6,029,156	\$ 3,617
VTC15173	Variable	\$/kWh	\$ 0.0068	30,947,901	\$ 210,446
VTC15174	Variable	\$/kWh	\$ -	17,586,351	\$ -
VTC15175	Variable	\$/kWh	\$ -	4,870,613	\$ -
VTC15176	Variable	\$/kWh	\$ -	520,909	\$ -
VTC15177	Variable	\$/kWh	\$ -	48,859	\$ -
VTC15178	Variable	\$/kWh	\$ 0.0102	4,825,081	\$ 49,216
VTC15179	Variable	\$/kWh	\$ 0.0068	413,661	\$ 2,813
VTC15180	Variable	\$/kWh	\$ 0.0068	4,243,230	\$ 28,854
VTC15181	Variable	\$/kWh	\$ 0.0068	3,808,743	\$ 25,899

## Appendix 7: Summary of $P_{i,2014}Q_{i,2013}$ for the 2015 assessment period

Sum	$P_{i,2014}Q_{i,2013}$ \$ 66,811,239
	$P_{i,2014}Q_{i,2013}$
Auckland published charges between 1 October 2013 to 30 September 2014	\$ 37,525,628
North Island published charges between 1 October 2013 to 30 September 2014	\$ 19,686,485
Auckland published charges between 1 October 2013 to 30 September 2014 - Scaling	\$ 100,926
Auckland non-standard charges between 1 October 2013 to 30 September 2014	\$ 6,267,946
North Island non-standard charges between 1 October 2013 to 30 September 2014	\$ 3,230,255



## Appendix 8: Auckland published charges from 1 October 2013

<b>Sum</b>	<i>P<sub>i,2014</sub>Q<sub>i,2013</sub></i> <b>\$ 37,525,628</b>
------------	---

### Residential

Price category	Code	Description	Units	<i>P<sub>i,2014</sub></i>	<i>Q<sub>i,2013</sub></i>	<i>P<sub>i,2014</sub>Q<sub>i,2013</sub></i>
GA0R	GA0R-FIXD	Fixed	\$/day	\$ 0.3000	32,810,473	\$ 9,843,142
GA0R	GA0R-24UC	Variable	\$/kWh	\$ 0.0235	616,283,093	\$ 14,482,653

### Business

Price category	Code	Description	Units	<i>P<sub>i,2014</sub></i>	<i>Q<sub>i,2013</sub></i>	<i>P<sub>i,2014</sub>Q<sub>i,2013</sub></i>
GA01	GA01-FIXD	Fixed	\$/day	\$ 0.5000	834,172	\$ 417,086
GA01	GA01-24UC	Variable	\$/kWh	\$ 0.0155	59,199,584	\$ 917,594

### Commercial

Price category	Code	Description	Units	<i>P<sub>i,2014</sub></i>	<i>Q<sub>i,2013</sub></i>	<i>P<sub>i,2014</sub>Q<sub>i,2013</sub></i>
GA02	GA02-FIXD	Fixed	\$/day	\$ 0.9000	901,346	\$ 811,211
GA02	GA02-24UC	Variable	\$/kWh	\$ 0.0120	224,049,947	\$ 2,688,599
GA03	GA03-FIXD	Fixed	\$/day	\$ 3.9000	315,648	\$ 1,231,027
GA03	GA03-24UC	Variable	\$/kWh	\$ 0.0092	491,654,286	\$ 4,523,219

### Industrial

Price category	Code	Description	Units	<i>P<sub>i,2014</sub></i>	<i>Q<sub>i,2013</sub></i>	<i>P<sub>i,2014</sub>Q<sub>i,2013</sub></i>
GA04	GA04-FIXD	Fixed	\$/day	\$ 12.0000	42,363	\$ 508,356
GA04	GA04-24UC	Variable	\$/kWh	\$ 0.0061	344,711,550	\$ 2,102,740

## Appendix 9: North Island published charges from 1 October 2013

	<i>P<sub>i,2014</sub>Q<sub>i,2013</sub></i>
<b>Sum</b>	<b>\$ 19,686,485</b>

### Residential

Price category	Code	Description	Units	<i>P<sub>i,2014</sub></i>	<i>Q<sub>i,2013</sub></i>	<i>P<sub>i,2014</sub>Q<sub>i,2013</sub></i>
GN0R	GN0R-FIXD	Fixed	\$/day	\$ 0.3000	20,666,362	\$ 6,199,909
GN0R	GN0R-24UC	Variable	\$/kWh	\$ 0.0235	333,405,066	\$ 7,835,019

### Business

Price category	Code	Description	Units	<i>P<sub>i,2014</sub></i>	<i>Q<sub>i,2013</sub></i>	<i>P<sub>i,2014</sub>Q<sub>i,2013</sub></i>
GN01	GN01-FIXD	Fixed	\$/day	\$ 0.5000	754,062	\$ 377,031
GN01	GN01-24UC	Variable	\$/kWh	\$ 0.0155	43,902,517	\$ 680,489

### Commercial

Price category	Code	Description	Units	<i>P<sub>i,2014</sub></i>	<i>Q<sub>i,2013</sub></i>	<i>P<sub>i,2014</sub>Q<sub>i,2013</sub></i>
GN02	GN02-FIXD	Fixed	\$/day	\$ 0.9000	462,576	\$ 416,318
GN02	GN02-24UC	Variable	\$/kWh	\$ 0.0120	108,874,738	\$ 1,306,497
GN03	GN03-FIXD	Fixed	\$/day	\$ 3.9000	172,700	\$ 673,530
GN03	GN03-24UC	Variable	\$/kWh	\$ 0.0092	174,209,720	\$ 1,602,729

### Industrial

Price category	Code	Description	Units	<i>P<sub>i,2014</sub></i>	<i>Q<sub>i,2013</sub></i>	<i>P<sub>i,2014</sub>Q<sub>i,2013</sub></i>
GN04	GN04-FIXD	Fixed	\$/day	\$ 12.0000	13,764	\$ 165,168
GN04	GN04-24UC	Variable	\$/kWh	\$ 0.0061	70,458,105	\$ 429,794

## Appendix 10: Auckland network – 2014 scaling

				<i>P<sub>i,2014</sub>Q<sub>i,2013</sub></i>		
<b>Sum</b>				<b>\$ 100,926</b>		
Price category	Code	Description	Units	<i>P<sub>i,2014</sub></i>	<i>Q<sub>i,2013</sub></i>	<i>P<sub>i,2014</sub>Q<sub>i,2013</sub></i>
GA0R	GA0R-24UC	Variable	\$/kWh	\$ 0.0235	2,872,631	\$ 67,507
GA01	GA01-24UC	Variable	\$/kWh	\$ 0.0155	240,509	\$ 3,728
GA02	GA02-24UC	Variable	\$/kWh	\$ 0.0120	794,410	\$ 9,533
GA03	GA03-24UC	Variable	\$/kWh	\$ 0.0092	1,710,188	\$ 15,734
GA04	GA04-24UC	Variable	\$/kWh	\$ 0.0061	725,276	\$ 4,424

## Appendix 11: Auckland non-standard charges from 1 October 2013

	<i>P<sub>i,2014</sub> Q<sub>i,2013</sub></i>
<b>Sum</b>	<b>\$ 6,267,946</b>

Code	Description	Units	<i>P<sub>i,2014</sub></i>	<i>Q<sub>i,2013</sub></i>	<i>P<sub>i,2014</sub> Q<sub>i,2013</sub></i>
VTC15001	Fixed	\$/day	\$ 12.00	365	\$ 4,380
VTC15002	Fixed	\$/day	\$ 117.24	365	\$ 42,793
VTC15003	Fixed	\$/day	\$ 607.76	365	\$ 221,832
VTC15004	Fixed	\$/day	\$ 12.00	365	\$ 4,380
VTC15005	Fixed	\$/day	\$ 82.42	365	\$ 30,083
VTC15006	Fixed	\$/day	\$ 319.77	365	\$ 116,716
VTC15007	Fixed	\$/day	\$ 70.28	365	\$ 25,652
VTC15008	Fixed	\$/day	\$ 12.00	365	\$ 4,380
VTC15009	Fixed	\$/day	\$ 59.31	365	\$ 21,648
VTC15010	Fixed	\$/day	\$ 75.43	365	\$ 27,532
VTC15011	Fixed	\$/day	\$ 97.23	365	\$ 35,489
VTC15012	Fixed	\$/day	\$ 12.00	365	\$ 4,380
VTC15013	Fixed	\$/day	\$ 3.90	365	\$ 1,424
VTC15014	Fixed	\$/day	\$ 187.19	365	\$ 68,324
VTC15015	Fixed	\$/day	\$ -	3	\$ -
VTC15016	Fixed	\$/day	\$ 112.42	365	\$ 41,033
VTC15017	Fixed	\$/day	\$ 166.89	365	\$ 60,915
VTC15018	Fixed	\$/day	\$ 218.29	365	\$ 79,676
VTC15019	Fixed	\$/day	\$ 34.12	365	\$ 12,454
VTC15020	Fixed	\$/day	\$ 44.41	365	\$ 16,210
VTC15021	Fixed	\$/day	\$ 193.72	365	\$ 70,708
VTC15022	Fixed	\$/day	\$ 21.92	365	\$ 8,001
VTC15023	Fixed	\$/day	\$ 12.00	365	\$ 4,380
VTC15024	Fixed	\$/day	\$ 3.90	365	\$ 1,424
VTC15025	Fixed	\$/day	\$ 135.67	365	\$ 49,520
VTC15026	Fixed	\$/day	\$ 39.62	365	\$ 14,461
VTC15027	Fixed	\$/day	\$ 12.00	365	\$ 4,380
VTC15028	Fixed	\$/day	\$ 12.00	365	\$ 4,380
VTC15029	Fixed	\$/day	\$ 114.14	365	\$ 41,661
VTC15030	Fixed	\$/day	\$ 668.03	365	\$ 243,831
VTC15031	Fixed	\$/day	\$ 3.90	365	\$ 1,424
VTC15032	Fixed	\$/day	\$ 428.98	365	\$ 156,578
VTC15033	Fixed	\$/day	\$ 12.00	365	\$ 4,380
VTC15034	Fixed	\$/day	\$ 12.00	365	\$ 4,380
VTC15035	Fixed	\$/day	\$ 12.00	365	\$ 4,380
VTC15036	Fixed	\$/day	\$ 12.00	365	\$ 4,380
VTC15037	Fixed	\$/day	\$ 12.00	365	\$ 4,380
VTC15038	Fixed	\$/day	\$ 12.00	365	\$ 4,380
VTC15039	Fixed	\$/day	\$ 12.00	365	\$ 4,380
VTC15040	Fixed	\$/day	\$ 100.41	365	\$ 36,650
VTC15041	Fixed	\$/day	\$ 1,969.35	365	\$ 718,813
VTC15042	Fixed	\$/day	\$ 3.90	365	\$ 1,424
VTC15043	Fixed	\$/day	\$ 12.00	365	\$ 4,380
VTC15044	Fixed	\$/day	\$ 91.67	365	\$ 33,460
VTC15045	Fixed	\$/day	\$ 12.00	365	\$ 4,380
VTC15046	Fixed	\$/day	\$ 12.00	365	\$ 4,380

Code	Description	Units	$P_{i,2014}$	$Q_{i,2013}$	$P_{i,2014} Q_{i,2013}$
VTC15047	Fixed	\$/day	\$ 32.70	365	\$ 11,936
VTC15048	Fixed	\$/day	\$ 12.00	365	\$ 4,380
VTC15049	Fixed	\$/day	\$ 3.90	365	\$ 1,424
VTC15050	Fixed	\$/day	\$ 132.97	365	\$ 48,534
VTC15051	Fixed	\$/day	\$ 3.90	365	\$ 1,424
VTC15052	Fixed	\$/day	\$ 3.90	365	\$ 1,424
VTC15053	Fixed	\$/day	\$ 3.90	365	\$ 1,424
VTC15054	Fixed	\$/day	\$ 48.49	365	\$ 17,699
VTC15055	Fixed	\$/day	\$ 65.60	365	\$ 23,944
VTC15056	Fixed	\$/day	\$ 35.43	365	\$ 12,932
VTC15057	Fixed	\$/day	\$ 235.24	365	\$ 85,863
VTC15058	Fixed	\$/day	\$ 12.00	365	\$ 4,380
VTC15059	Fixed	\$/day	\$ 121.20	365	\$ 44,238
VTC15060	Fixed	\$/day	\$ 118.60	365	\$ 43,289
VTC15061	Fixed	\$/day	\$ 3.90	365	\$ 1,424
VTC15062	Fixed	\$/day	\$ 100.41	365	\$ 36,650
VTC15063	Fixed	\$/day	\$ 22.86	365	\$ 8,344
VTC15064	Fixed	\$/day	\$ 100.41	365	\$ 36,650
VTC15065	Fixed	\$/day	\$ -	135	\$ -
VTC15066	Fixed	\$/day	\$ 12.00	365	\$ 4,380
VTC15067	Fixed	\$/day	\$ 12.00	365	\$ 4,380
VTC15068	Fixed	\$/day	\$ 12.00	365	\$ 4,380
VTC15069	Fixed	\$/day	\$ 12.00	365	\$ 4,380
VTC15070	Fixed	\$/day	\$ 3.90	365	\$ 1,424
VTC15071	Fixed	\$/day	\$ 12.00	365	\$ 4,380
VTC15072	Fixed	\$/day	\$ 3.90	365	\$ 1,424
VTC15073	Fixed	\$/day	\$ 100.41	365	\$ 36,650
VTC15074	Fixed	\$/day	\$ 12.00	365	\$ 4,380
VTC15075	Fixed	\$/day	\$ 184.27	365	\$ 67,259
VTC15076	Fixed	\$/day	\$ 229.12	365	\$ 83,629
VTC15077	Fixed	\$/day	\$ 10.97	365	\$ 4,004
VTC15078	Fixed	\$/day	\$ 0.90	365	\$ 329
VTC15079	Fixed	\$/day	\$ 159.99	365	\$ 58,396
VTC15080	Fixed	\$/day	\$ 12.00	365	\$ 4,380
VTC15081	Fixed	\$/day	\$ 326.14	365	\$ 119,041
VTC15082	Fixed	\$/day	\$ 58.30	365	\$ 21,280
VTC15083	Fixed	\$/day	\$ 12.00	365	\$ 4,380
VTC15084	Fixed	\$/day	\$ 12.00	365	\$ 4,380
VTC15085	Fixed	\$/day	\$ 265.75	224	\$ 59,528
VTC15086	Fixed	\$/day	\$ -	-	\$ -
VTC15087	Fixed	\$/day	\$ 480.97	365	\$ 175,554
VTC15088	Fixed	\$/day	\$ -	-	\$ -
VTC15089	Fixed	\$/day	\$ 3.90	50	\$ 195
VTC15090	Fixed	\$/day	\$ -	315	\$ -
VTC15091	Fixed	\$/day	\$ 141.28	300	\$ 42,384
VTC15092	Fixed	\$/day	\$ 141.28	65	\$ 9,183
VTC15093	Fixed	\$/day	\$ 33.34	9	\$ 300
VTC15094	Fixed	\$/day	\$ 33.34	356	\$ 11,869
VTC15095	Fixed	\$/day	\$ 0.90	238	\$ 214

Code	Description	Units	$P_{i,2014}$	$Q_{i,2013}$	$P_{i,2014} Q_{i,2013}$
VTC15096	Fixed	\$/day	\$ 0.90	127	\$ 114
VTC15097	Fixed	\$/day	\$ 12.00	115	\$ 1,380
VTC15098	Fixed	\$/day	\$ 12.00	250	\$ 3,000
VTC15099	Fixed	\$/day	\$ -	365	\$ -
VTC15100	Fixed	\$/day	\$ 344.96	365	\$ 125,910
VTC15101	Fixed	\$/day	\$ 303.93	365	\$ 110,934
VTC15102	Fixed	\$/day	\$ 12.00	365	\$ 4,380
VTC15103	Fixed	\$/day	\$ 112.08	365	\$ 40,909
VTC15104	Fixed	\$/day	\$ 12.00	365	\$ 4,380
VTC15105	Fixed	\$/day	\$ 12.00	365	\$ 4,380
VTC15106	Fixed	\$/day	\$ 155.29	365	\$ 56,681
VTC15107	Fixed	\$/day	\$ -	365	\$ -
VTC15108	Fixed	\$/day	\$ 92.43	365	\$ 33,737
VTC15109	Fixed	\$/day	\$ 26.50	-	\$ -

Code	Description	Units	$P_{i,2014}$	$Q_{i,2013}$	$P_{i,2014} Q_{i,2013}$
VTC15001	Variable	\$/kWh	\$ 0.0061	7,185,370	\$ 43,831
VTC15002	Variable	\$/kWh	\$ 0.0004	23,584,124	\$ 9,434
VTC15003	Variable	\$/kWh	\$ 0.0002	345,083,090	\$ 69,017
VTC15004	Variable	\$/kWh	\$ 0.0061	1,796,814	\$ 10,961
VTC15005	Variable	\$/kWh	\$ 0.0009	8,121,042	\$ 7,309
VTC15006	Variable	\$/kWh	\$ 0.0006	46,361,521	\$ 27,817
VTC15007	Variable	\$/kWh	\$ 0.0006	9,324,615	\$ 5,595
VTC15008	Variable	\$/kWh	\$ 0.0061	9,550,594	\$ 58,259
VTC15009	Variable	\$/kWh	\$ -	2,595,394	\$ -
VTC15010	Variable	\$/kWh	\$ -	7,316,234	\$ -
VTC15011	Variable	\$/kWh	\$ 0.0009	9,539,478	\$ 8,586
VTC15012	Variable	\$/kWh	\$ 0.0061	18,987,047	\$ 115,821
VTC15013	Variable	\$/kWh	\$ 0.0092	783,199	\$ 7,205
VTC15014	Variable	\$/kWh	\$ 0.0007	30,425,154	\$ 21,298
VTC15015	Variable	\$/kWh	\$ -	1,980	\$ -
VTC15016	Variable	\$/kWh	\$ 0.0032	28,142,197	\$ 90,843
VTC15017	Variable	\$/kWh	\$ 0.0009	18,863,949	\$ 16,978
VTC15018	Variable	\$/kWh	\$ 0.0009	24,802,855	\$ 22,323
VTC15019	Variable	\$/kWh	\$ -	2,079,159	\$ -
VTC15020	Variable	\$/kWh	\$ 0.0008	4,374,049	\$ 3,499
VTC15021	Variable	\$/kWh	\$ 0.0005	39,146,401	\$ 19,573
VTC15022	Variable	\$/kWh	\$ 0.0004	3,312,680	\$ 1,325
VTC15023	Variable	\$/kWh	\$ 0.0061	34,786,812	\$ 212,200
VTC15024	Variable	\$/kWh	\$ 0.0092	2,863,879	\$ 26,348
VTC15025	Variable	\$/kWh	\$ 0.0004	32,219,806	\$ 12,888
VTC15026	Variable	\$/kWh	\$ 0.0007	4,893,163	\$ 3,425
VTC15027	Variable	\$/kWh	\$ 0.0061	1,878,464	\$ 11,459
VTC15028	Variable	\$/kWh	\$ 0.0061	11,666,177	\$ 71,164
VTC15029	Variable	\$/kWh	\$ 0.0010	9,505,704	\$ 9,506
VTC15030	Variable	\$/kWh	\$ 0.0011	58,474,428	\$ 64,322
VTC15031	Variable	\$/kWh	\$ 0.0092	5,004,639	\$ 46,043
VTC15032	Variable	\$/kWh	\$ 0.0004	94,943,552	\$ 37,977
VTC15033	Variable	\$/kWh	\$ 0.0061	3,867,185	\$ 23,590
VTC15034	Variable	\$/kWh	\$ 0.0061	3,591,905	\$ 21,911
VTC15035	Variable	\$/kWh	\$ 0.0061	21,668,329	\$ 132,177

Code	Description	Units	$P_{i,2014}$	$Q_{i,2013}$	$P_{i,2014} Q_{i,2013}$
VTC15036	Variable	\$/kWh	\$ 0.0061	6,529,340	\$ 39,829
VTC15037	Variable	\$/kWh	\$ 0.0061	2,554,911	\$ 15,585
VTC15038	Variable	\$/kWh	\$ 0.0061	3,047,841	\$ 18,592
VTC15039	Variable	\$/kWh	\$ 0.0061	2,917,864	\$ 17,799
VTC15040	Variable	\$/kWh	\$ 0.0009	91,712	\$ 86
VTC15041	Variable	\$/kWh	\$ -	132,535,126	\$ -
VTC15042	Variable	\$/kWh	\$ 0.0092	858,870	\$ 7,902
VTC15043	Variable	\$/kWh	\$ 0.0061	4,449,210	\$ 27,140
VTC15044	Variable	\$/kWh	\$ 0.0011	8,030,622	\$ 8,834
VTC15045	Variable	\$/kWh	\$ 0.0061	14,385,122	\$ 87,749
VTC15046	Variable	\$/kWh	\$ 0.0061	9,837,405	\$ 60,008
VTC15047	Variable	\$/kWh	\$ 0.0009	3,888,258	\$ 3,499
VTC15048	Variable	\$/kWh	\$ 0.0061	4,762,928	\$ 29,054
VTC15049	Variable	\$/kWh	\$ 0.0092	3,276,251	\$ 30,142
VTC15050	Variable	\$/kWh	\$ 0.0006	21,841,175	\$ 13,105
VTC15051	Variable	\$/kWh	\$ 0.0092	368,708	\$ 3,392
VTC15052	Variable	\$/kWh	\$ 0.0092	603,000	\$ 5,548
VTC15053	Variable	\$/kWh	\$ 0.0092	1,264,397	\$ 11,632
VTC15054	Variable	\$/kWh	\$ 0.0012	4,112,849	\$ 4,935
VTC15055	Variable	\$/kWh	\$ 0.0009	6,506,116	\$ 5,856
VTC15056	Variable	\$/kWh	\$ 0.0008	3,712,590	\$ 2,970
VTC15057	Variable	\$/kWh	\$ 0.0010	19,861,716	\$ 19,862
VTC15058	Variable	\$/kWh	\$ 0.0061	523,761	\$ 3,195
VTC15059	Variable	\$/kWh	\$ 0.0006	19,343,901	\$ 11,606
VTC15060	Variable	\$/kWh	\$ 0.0009	11,557,686	\$ 10,402
VTC15061	Variable	\$/kWh	\$ 0.0092	620,585	\$ 5,709
VTC15062	Variable	\$/kWh	\$ 0.0009	37,631,763	\$ 35,374
VTC15063	Variable	\$/kWh	\$ 0.0007	3,044,745	\$ 2,131
VTC15064	Variable	\$/kWh	\$ 0.0009	14,460,788	\$ 13,593
VTC15065	Variable	\$/kWh	\$ -	-	\$ -
VTC15066	Variable	\$/kWh	\$ 0.0061	4,154,855	\$ 25,345
VTC15067	Variable	\$/kWh	\$ 0.0061	1,855,341	\$ 11,318
VTC15068	Variable	\$/kWh	\$ 0.0061	782,498	\$ 4,773
VTC15069	Variable	\$/kWh	\$ 0.0061	19,555,638	\$ 119,289
VTC15070	Variable	\$/kWh	\$ 0.0092	3,302,274	\$ 30,381
VTC15071	Variable	\$/kWh	\$ 0.0061	5,642,418	\$ 34,419
VTC15072	Variable	\$/kWh	\$ 0.0092	4,853,075	\$ 44,648
VTC15073	Variable	\$/kWh	\$ 0.00094	15,424,194	\$ 14,499
VTC15074	Variable	\$/kWh	\$ 0.0061	4,658,892	\$ 28,419
VTC15075	Variable	\$/kWh	\$ 0.0008	20,958,731	\$ 16,767
VTC15076	Variable	\$/kWh	\$ 0.0007	31,320,745	\$ 21,925
VTC15077	Variable	\$/kWh	\$ 0.0021	469,216	\$ 985
VTC15078	Variable	\$/kWh	\$ 0.0120	764,187	\$ 9,170
VTC15079	Variable	\$/kWh	\$ 0.0009	17,337,788	\$ 15,604
VTC15080	Variable	\$/kWh	\$ 0.0061	5,141,001	\$ 31,360
VTC15081	Variable	\$/kWh	\$ -	30,419,369	\$ -
VTC15082	Variable	\$/kWh	\$ 0.0007	6,964,174	\$ 4,875
VTC15083	Variable	\$/kWh	\$ 0.0061	2,821,931	\$ 17,214
VTC15084	Variable	\$/kWh	\$ 0.0061	13,436,739	\$ 81,964
VTC15085	Variable	\$/kWh	\$ -	496,494	\$ -

Code	Description	Units	$P_{i,2014}$	$Q_{i,2013}$	$P_{i,2014} Q_{i,2013}$
VTC15086	Variable	\$/kWh	\$ -	-	\$ -
VTC15087	Variable	\$/kWh	\$ 0.0004	122,967,210	\$ 49,187
VTC15088	Variable	\$/kWh	\$ -	-	\$ -
VTC15089	Variable	\$/kWh	\$ 0.0092	405,327	\$ 3,729
VTC15090	Variable	\$/kWh	\$ -	2,171,674	\$ -
VTC15091	Variable	\$/kWh	\$ 0.0005	24,976,504	\$ 12,488
VTC15092	Variable	\$/kWh	\$ 0.0005	5,929,519	\$ 2,965
VTC15093	Variable	\$/kWh	\$ 0.0008	16,772	\$ 13
VTC15094	Variable	\$/kWh	\$ 0.0008	638,904	\$ 511
VTC15095	Variable	\$/kWh	\$ 0.0120	-	\$ -
VTC15096	Variable	\$/kWh	\$ 0.0120	-	\$ -
VTC15097	Variable	\$/kWh	\$ 0.0061	2,740,225	\$ 16,715
VTC15098	Variable	\$/kWh	\$ 0.0061	5,303,866	\$ 32,354
VTC15099	Variable	\$/kWh	\$ 0.0008	56,573,967	\$ 46,051
VTC15100	Variable	\$/kWh	\$ -	37,986,488	\$ -
VTC15101	Variable	\$/kWh	\$ -	42,775,729	\$ -
VTC15102	Variable	\$/kWh	\$ 0.0061	5,009,574	\$ 30,558
VTC15103	Variable	\$/kWh	\$ 0.0007	10,537,129	\$ 7,376
VTC15104	Variable	\$/kWh	\$ 0.0061	7,866,015	\$ 47,983
VTC15105	Variable	\$/kWh	\$ 0.0061	4,685,900	\$ 28,584
VTC15106	Variable	\$/kWh	\$ -	18,184,872	\$ -
VTC15107	Variable	\$/kWh	\$ -	30,720	\$ -
VTC15108	Variable	\$/kWh	\$ 0.0003	34,114,932	\$ 10,234
VTC15109	Variable	\$/kWh	\$ -	-	\$ -



## Appendix 12: North Island non-standard charges from 1 October 2013

				<i>P<sub>i,2014</sub></i>	<i>Q<sub>i,2013</sub></i>	<i>P<sub>i,2014</sub> Q<sub>i,2013</sub></i>
<b>Sum</b>				<b>\$</b>	<b>3,230,255</b>	
Code	Description	Units	<i>P<sub>i,2014</sub></i>	<i>Q<sub>i,2013</sub></i>	<i>P<sub>i,2014</sub> Q<sub>i,2013</sub></i>	
VTC15110	Fixed	\$/day	\$ 12.00	365	\$	4,380
VTC15111	Fixed	\$/day	\$ 12.00	365	\$	4,380
VTC15112	Fixed	\$/day	\$ 3.90	365	\$	1,424
VTC15113	Fixed	\$/day	\$ 12.00	365	\$	4,380
VTC15114	Fixed	\$/day	\$ 3.90	365	\$	1,424
VTC15115	Fixed	\$/day	\$ 12.00	365	\$	4,380
VTC15116	Fixed	\$/day	\$ 12.00	365	\$	4,380
VTC15117	Fixed	\$/day	\$ 12.00	365	\$	4,380
VTC15118	Fixed	\$/day	\$ 299.72	365	\$	109,398
VTC15119	Fixed	\$/day	\$ 12.00	365	\$	4,380
VTC15120	Fixed	\$/day	\$ 3.90	365	\$	1,424
VTC15121	Fixed	\$/day	\$ 12.00	365	\$	4,380
VTC15122	Fixed	\$/day	\$ 48.40	365	\$	17,666
VTC15123	Fixed	\$/day	\$ 79.86	365	\$	29,149
VTC15124	Fixed	\$/day	\$ -	365	\$	-
VTC15125	Fixed	\$/day	\$ 23.66	365	\$	8,636
VTC15126	Fixed	\$/day	\$ 12.00	365	\$	4,380
VTC15127	Fixed	\$/day	\$ 150.60	365	\$	54,969
VTC15128	Fixed	\$/day	\$ 144.42	365	\$	52,713
VTC15129	Fixed	\$/day	\$ -	334	\$	-
VTC15130	Fixed	\$/day	\$ 12.00	365	\$	4,380
VTC15131	Fixed	\$/day	\$ 285.54	365	\$	104,222
VTC15132	Fixed	\$/day	\$ 308.13	365	\$	112,467
VTC15133	Fixed	\$/day	\$ 12.00	365	\$	4,380
VTC15134	Fixed	\$/day	\$ 12.00	365	\$	4,380
VTC15135	Fixed	\$/day	\$ 12.00	365	\$	4,380
VTC15136	Fixed	\$/day	\$ 3.90	365	\$	1,424
VTC15137	Fixed	\$/day	\$ 12.00	365	\$	4,380
VTC15138	Fixed	\$/day	\$ 100.46	365	\$	36,668
VTC15139	Fixed	\$/day	\$ 45.28	365	\$	16,527
VTC15140	Fixed	\$/day	\$ 12.00	365	\$	4,380
VTC15141	Fixed	\$/day	\$ 61.07	365	\$	22,291
VTC15142	Fixed	\$/day	\$ 3.90	365	\$	1,424
VTC15143	Fixed	\$/day	\$ 3.90	365	\$	1,424
VTC15144	Fixed	\$/day	\$ 42.70	365	\$	15,586
VTC15145	Fixed	\$/day	\$ 12.00	365	\$	4,380
VTC15146	Fixed	\$/day	\$ 3.90	365	\$	1,424
VTC15147	Fixed	\$/day	\$ 194.81	365	\$	71,106
VTC15148	Fixed	\$/day	\$ 3.90	365	\$	1,424
VTC15149	Fixed	\$/day	\$ 12.00	365	\$	4,380
VTC15150	Fixed	\$/day	\$ 12.00	365	\$	4,380
VTC15151	Fixed	\$/day	\$ 227.48	365	\$	83,030
VTC15152	Fixed	\$/day	\$ 344.85	365	\$	125,870
VTC15153	Fixed	\$/day	\$ 12.00	365	\$	4,380

Code	Description	Units	$P_{i,2014}$	$Q_{i,2013}$	$P_{i,2014} Q_{i,2013}$
VTC15154	Fixed	\$/day	\$ 12.00	365	\$ 4,380
VTC15155	Fixed	\$/day	\$ 60.16	365	\$ 21,958
VTC15156	Fixed	\$/day	\$ 3.90	365	\$ 1,424
VTC15157	Fixed	\$/day	\$ 31.80	365	\$ 11,605
VTC15158	Fixed	\$/day	\$ 101.01	365	\$ 36,869
VTC15159	Fixed	\$/day	\$ 12.00	365	\$ 4,380
VTC15160	Fixed	\$/day	\$ 12.00	365	\$ 4,380
VTC15161	Fixed	\$/day	\$ 12.00	365	\$ 4,380
VTC15162	Fixed	\$/day	\$ 12.00	365	\$ 4,380
VTC15163	Fixed	\$/day	\$ 3.90	365	\$ 1,424
VTC15164	Fixed	\$/day	\$ 12.00	365	\$ 4,380
VTC15165	Fixed	\$/day	\$ 3.90	365	\$ 1,424
VTC15166	Fixed	\$/day	\$ 3.90	365	\$ 1,424
VTC15167	Fixed	\$/day	\$ 12.00	365	\$ 4,380
VTC15168	Fixed	\$/day	\$ 3.90	365	\$ 1,424
VTC15169	Fixed	\$/day	\$ 12.00	365	\$ 4,380
VTC15170	Fixed	\$/day	\$ 3.90	365	\$ 1,424
VTC15171	Fixed	\$/day	\$ 3.90	365	\$ 1,424
VTC15172	Fixed	\$/day	\$ 12.00	365	\$ 4,380
VTC15173	Fixed	\$/day	\$ 12.00	365	\$ 4,380
VTC15174	Fixed	\$/day	\$ 12.00	289	\$ 3,468
VTC15175	Fixed	\$/day	\$ -	76	\$ -
VTC15176	Fixed	\$/day	\$ 3.90	304	\$ 1,186
VTC15177	Fixed	\$/day	\$ -	61	\$ -
VTC15178	Fixed	\$/day	\$ 239.30	340	\$ 81,362
VTC15179	Fixed	\$/day	\$ 239.30	25	\$ 5,983
VTC15180	Fixed	\$/day	\$ 3.90	218	\$ 850
VTC15181	Fixed	\$/day	\$ 12.00	147	\$ 1,764

Code	Description	Units	$P_{i,2014}$	$Q_{i,2013}$	$P_{i,2014} Q_{i,2013}$
VTC15110	Variable	\$/kWh	\$ 0.0061	1,843,315	\$ 11,244
VTC15111	Variable	\$/kWh	\$ 0.0061	5,254,430	\$ 32,052
VTC15112	Variable	\$/kWh	\$ 0.0092	4,256,789	\$ 39,162
VTC15113	Variable	\$/kWh	\$ 0.0061	1,712,225	\$ 10,445
VTC15114	Variable	\$/kWh	\$ 0.0092	2,846,322	\$ 26,186
VTC15115	Variable	\$/kWh	\$ 0.0061	5,059,368	\$ 30,862
VTC15116	Variable	\$/kWh	\$ 0.0061	5,387,545	\$ 32,864
VTC15117	Variable	\$/kWh	\$ 0.0061	6,805,211	\$ 41,512
VTC15118	Variable	\$/kWh	\$ -	20,764,045	\$ -
VTC15119	Variable	\$/kWh	\$ 0.0061	5,229,588	\$ 31,900
VTC15120	Variable	\$/kWh	\$ 0.0092	4,209,004	\$ 38,723
VTC15121	Variable	\$/kWh	\$ 0.0061	5,947,889	\$ 36,282
VTC15122	Variable	\$/kWh	\$ -	101,124,414	\$ -
VTC15123	Variable	\$/kWh	\$ -	86,190,794	\$ -
VTC15124	Variable	\$/kWh	\$ -	18,534,078	\$ -
VTC15125	Variable	\$/kWh	\$ -	56,804,013	\$ -
VTC15126	Variable	\$/kWh	\$ 0.0061	2,440,647	\$ 14,888
VTC15127	Variable	\$/kWh	\$ -	60,006,841	\$ -
VTC15128	Variable	\$/kWh	\$ -	163,321,602	\$ -
VTC15129	Variable	\$/kWh	\$ -	30,152,664	\$ -
VTC15130	Variable	\$/kWh	\$ 0.0061	5,598,562	\$ 34,151

Code	Description	Units	$P_{i,2014}$	$Q_{i,2013}$	$P_{i,2014} Q_{i,2013}$
VTC15131	Variable	\$/kWh	\$ -	46,860,582	\$ -
VTC15132	Variable	\$/kWh	\$ -	42,741,022	\$ -
VTC15133	Variable	\$/kWh	\$ 0.0061	7,333,410	\$ 44,734
VTC15134	Variable	\$/kWh	\$ 0.0061	5,280,505	\$ 32,211
VTC15135	Variable	\$/kWh	\$ 0.0061	3,743,089	\$ 22,833
VTC15136	Variable	\$/kWh	\$ 0.0092	2,063,963	\$ 18,988
VTC15137	Variable	\$/kWh	\$ 0.0061	8,291,514	\$ 50,578
VTC15138	Variable	\$/kWh	\$ -	152,142,679	\$ -
VTC15139	Variable	\$/kWh	\$ -	128,505,265	\$ -
VTC15140	Variable	\$/kWh	\$ 0.0061	27,811,349	\$ 169,649
VTC15141	Variable	\$/kWh	\$ -	11,010,289	\$ -
VTC15142	Variable	\$/kWh	\$ 0.0092	2,104,812	\$ 19,364
VTC15143	Variable	\$/kWh	\$ 0.0092	4,563,853	\$ 41,987
VTC15144	Variable	\$/kWh	\$ -	3,297,101	\$ -
VTC15145	Variable	\$/kWh	\$ 0.0061	4,622,263	\$ 28,196
VTC15146	Variable	\$/kWh	\$ 0.0092	2,869,418	\$ 26,399
VTC15147	Variable	\$/kWh	\$ -	17,178,390	\$ -
VTC15148	Variable	\$/kWh	\$ 0.0092	4,919,668	\$ 45,261
VTC15149	Variable	\$/kWh	\$ 0.0061	6,903,444	\$ 42,111
VTC15150	Variable	\$/kWh	\$ 0.0061	15,444,438	\$ 94,211
VTC15151	Variable	\$/kWh	\$ -	15,022,657	\$ -
VTC15152	Variable	\$/kWh	\$ -	30,717,458	\$ -
VTC15153	Variable	\$/kWh	\$ 0.0061	3,449,504	\$ 21,042
VTC15154	Variable	\$/kWh	\$ 0.0061	15,043,375	\$ 91,765
VTC15155	Variable	\$/kWh	\$ 0.0000	208,171,041	\$ 4,163
VTC15156	Variable	\$/kWh	\$ 0.0092	3,989,019	\$ 36,699
VTC15157	Variable	\$/kWh	\$ -	71,973,226	\$ -
VTC15158	Variable	\$/kWh	\$ 0.0013	6,441,888	\$ 8,374
VTC15159	Variable	\$/kWh	\$ 0.0061	5,908,163	\$ 36,040
VTC15160	Variable	\$/kWh	\$ 0.0061	4,881,496	\$ 29,777
VTC15161	Variable	\$/kWh	\$ 0.0061	12,045,248	\$ 73,476
VTC15162	Variable	\$/kWh	\$ 0.0061	3,451,960	\$ 21,057
VTC15163	Variable	\$/kWh	\$ 0.0092	4,705,484	\$ 43,290
VTC15164	Variable	\$/kWh	\$ 0.0061	1,921,982	\$ 11,724
VTC15165	Variable	\$/kWh	\$ 0.0092	3,755,895	\$ 34,554
VTC15166	Variable	\$/kWh	\$ 0.0092	1,798,169	\$ 16,543
VTC15167	Variable	\$/kWh	\$ 0.0061	15,270,721	\$ 93,151
VTC15168	Variable	\$/kWh	\$ 0.0092	3,843,163	\$ 35,357
VTC15169	Variable	\$/kWh	\$ 0.0061	1,928,447	\$ 11,764
VTC15170	Variable	\$/kWh	\$ 0.0092	4,014,628	\$ 36,935
VTC15171	Variable	\$/kWh	\$ 0.0092	3,083,760	\$ 28,371
VTC15172	Variable	\$/kWh	\$ 0.0061	6,029,156	\$ 36,778
VTC15173	Variable	\$/kWh	\$ 0.0061	30,947,901	\$ 188,782
VTC15174	Variable	\$/kWh	\$ 0.0061	17,586,351	\$ 107,277
VTC15175	Variable	\$/kWh	\$ -	4,870,613	\$ -
VTC15176	Variable	\$/kWh	\$ 0.0092	520,909	\$ 4,792
VTC15177	Variable	\$/kWh	\$ -	48,859	\$ -
VTC15178	Variable	\$/kWh	\$ 0.0011	4,825,081	\$ 5,308
VTC15179	Variable	\$/kWh	\$ 0.0011	413,661	\$ 455
VTC15180	Variable	\$/kWh	\$ 0.0092	4,243,230	\$ 39,038
VTC15181	Variable	\$/kWh	\$ 0.0061	3,808,743	\$ 23,233

## Appendix 13: Consumer price index

### Consumers price index

Tradables, non-tradables and all groups – index numbers and percentage changes<sup>(1)(2)</sup>

Base: June 2006 quarter (=1000)

Series ref. CPIQ	Index	Tradables <sup>(3)(4)</sup>		Non-tradables <sup>(5)</sup>			All groups <sup>(3)</sup>		
		Percentage change		Index	Percentage change		Index	Percentage change	
		From previous quarter	From same quarter of previous year		From previous quarter	From same quarter of previous year		From previous quarter	From same quarter of previous year
SE9NS6000	SE9NS6500	SE9A							
<b>Quarter</b>									
2006 Jun	1000	2.3	3.8	1000	1.0	4.1	1000	1.5	4.0
Sep	1003	0.3	3.0	1010	1.0	4.0	1007	0.7	3.5
Dec	990	-1.3	1.2	1018	0.8	3.8	1005	-0.2	2.6
2007 Mar	986	-0.4	0.9	1030	1.2	4.1	1010	0.5	2.5
Jun	995	0.9	-0.5	1041	1.1	4.1	1020	1.0	2.0
Sep	1000	0.5	-0.3	1047	0.6	3.7	1025	0.5	1.8
Dec	1018	1.8	2.8	1054	0.7	3.5	1037	1.2	3.2
2008 Mar	1020	0.2	3.4	1066	1.1	3.5	1044	0.7	3.4
Jun	1043	2.3	4.8	1076	0.9	3.4	1061	1.6	4.0
Sep	1063	1.9	6.3	1090	1.3	4.1	1077	1.5	5.1
Dec	1041	-2.1	2.3	1099	0.8	4.3	1072	-0.5	3.4
2009 Mar	1037	-0.4	1.7	1107	0.7	3.8	1075	0.3	3.0
Jun	1045	0.8	0.2	1112	0.5	3.3	1081	0.6	1.9
Sep	1062	1.6	-0.1	1123	1.0	3.0	1095	1.3	1.7
Dec	1057	-0.5	1.5	1124	0.1	2.3	1093	-0.2	2.0
2010 Mar	1058	0.1	2.0	1130	0.5	2.1	1097	0.4	2.0
Jun	1055	-0.3	1.0	1137	0.6	2.2	1099	0.2	1.7
Sep	1065	0.9	0.3	1151	1.2	2.5	1111	1.1	1.5
Dec	1092	2.5	3.3	1176	2.2	4.6	1137	2.3	4.0
2011 Mar	1097	0.5	3.7	1189	1.1	5.2	1146	0.8	4.5
Jun	1113	1.5	5.5	1196	0.6	5.2	1157	1.0	5.3
Sep	1114	0.1	4.6	1203	0.6	4.5	1162	0.4	4.6
Dec	1104	-0.9	1.1	1205	0.2	2.5	1158	-0.3	1.8
2012 Mar	1100	-0.4	0.3	1219	1.2	2.5	1164	0.5	1.6
Jun	1101	0.1	-1.1	1225	0.5	2.4	1168	0.3	1.0
Sep	1101	0.0	-1.2	1231	0.5	2.3	1171	0.3	0.8
Dec	1093	-0.7	-1.0	1235	0.3	2.5	1169	-0.2	0.9
2013 Mar	1088	-0.5	-1.1	1248	1.1	2.4	1174	0.4	0.9
Jun	1083	-0.5	-1.6	1256	0.6	2.5	1176	0.2	0.7
Sep	1096	1.2	-0.5	1265	0.7	2.8	1187	0.9	1.4
Dec	1090	-0.5	-0.3	1271	0.5	2.9	1188	0.1	1.6
2014 Mar	1082	-0.7	-0.6	1285	1.1	3.0	1192	0.3	1.5
Jun	1084	0.2	0.1	1290	0.4	2.7	1195	0.3	1.6

1. Percentage changes are calculated from index numbers that are not rounded until the June 2006 quarter.
2. Five decimal places are retained before the June 2006 quarter to preserve percentage changes that were originally published on earlier expression bases.
3. From the September 2006 quarter, prices for fresh fruit and vegetables are not seasonally adjusted. They were seasonally adjusted until the June 2006 quarter.
4. Tradables are goods and services that are imported or are in competition with foreign goods and services, either in domestic or foreign markets.
5. Non-tradables are goods and services that do not face foreign competition.

Source: Statistics New Zealand

$$\Delta CPI_{2015} = \frac{CPI_{Jun,2013} + CPI_{Sep,2013} + CPI_{Dec,2013} + CPI_{Mar,2014}}{CPI_{Jun,2012} + CPI_{Sep,2012} + CPI_{Dec,2012} + CPI_{Mar,2013}} - 1$$

$$\Delta CPI_{2015} = \frac{1176 + 1187 + 1188 + 1192}{1168 + 1171 + 1169 + 1174} - 1$$

$$\Delta CPI_{2015} = 0.0130$$

## Appendix 14: Pass-through costs

Cost type	Pass-through cost	Period cost relates to			Total for recovery PY2015
		PY2013	PY2014	PY2015	
Rate	Auckland Council	-	795,068	1,449,950	2,245,018
Rate	Gisborne District Council	-	-	-	-
Rate	Hamilton City Council	-	-	-	-
Rate	Horizons Regional Council	788	2,243	-	3,031
Rate	Horowhenua District Council	-	-	-	-
Rate	Kapiti Coast District Council	-	-	-	-
Rate	Kawerau District Council	-	-	-	-
Rate	Matamata-Piako District Council	-	-	-	-
Rate	Opotiki District Council	540	1,536	-	2,076
Rate	Otorohanga District Council	770	731	-	1,501
Rate	Rotorua District Council	-	-	-	-
Rate	Taupo District Council	1,033	2,941	-	3,974
Rate	Tauranga District Council	20,242	19,208	-	39,450
Rate	Waikato Regional Council	-	-	-	-
Rate	Waipa District Council	-	-	-	-
Rate	Wellington City Council	2,404	6,845	-	9,249
Rate	Western Bay of Plenty District Council	-	2,662	-	2,662
Rate	Whakatane District Council	-	-	-	-
Rate	Whangarei District Council	-	-	-	-
Levy	Electricity and Gas Complaints Commissioner		29,801	28,279	58,080
Levy	Commerce Commission		121,748	346,597	468,345
	<b>Sub-total: Rates</b>	<b>25,777</b>	<b>831,235</b>	<b>1,449,950</b>	<b>2,306,963</b>
	<b>Sub-total: Levies</b>	<b>0</b>	<b>151,548</b>	<b>374,876</b>	<b>526,425</b>
	<b>Total: Pass-through costs</b>	<b>25,777</b>	<b>982,783</b>	<b>1,824,826</b>	<b>2,833,387</b>

### Notes

1. PY2013 = pricing year 2013, PY2014 = pricing year 2014, PY2015 = pricing year 2015.
2. All costs include the time value of money adjustments, which has been calculated in accordance with Equation 5 in Schedule 6 of the Determination.
3. Dates paid are equivalent to the dates for each pricing year to which the costs relate, with the exception of the EGCC levy which is paid annually in April. The total EGCC levy has been apportioned to the relevant pricing period to which it relates.