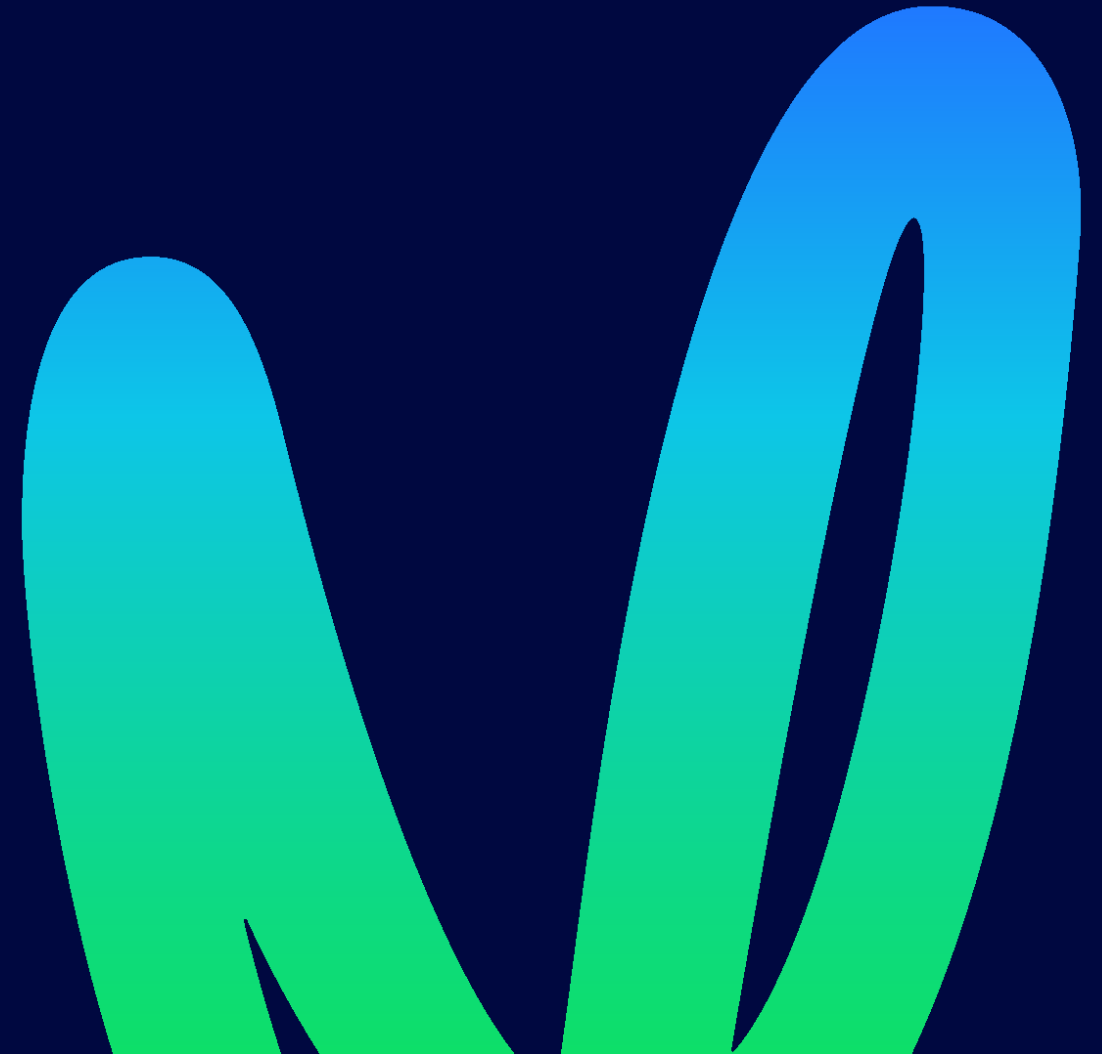


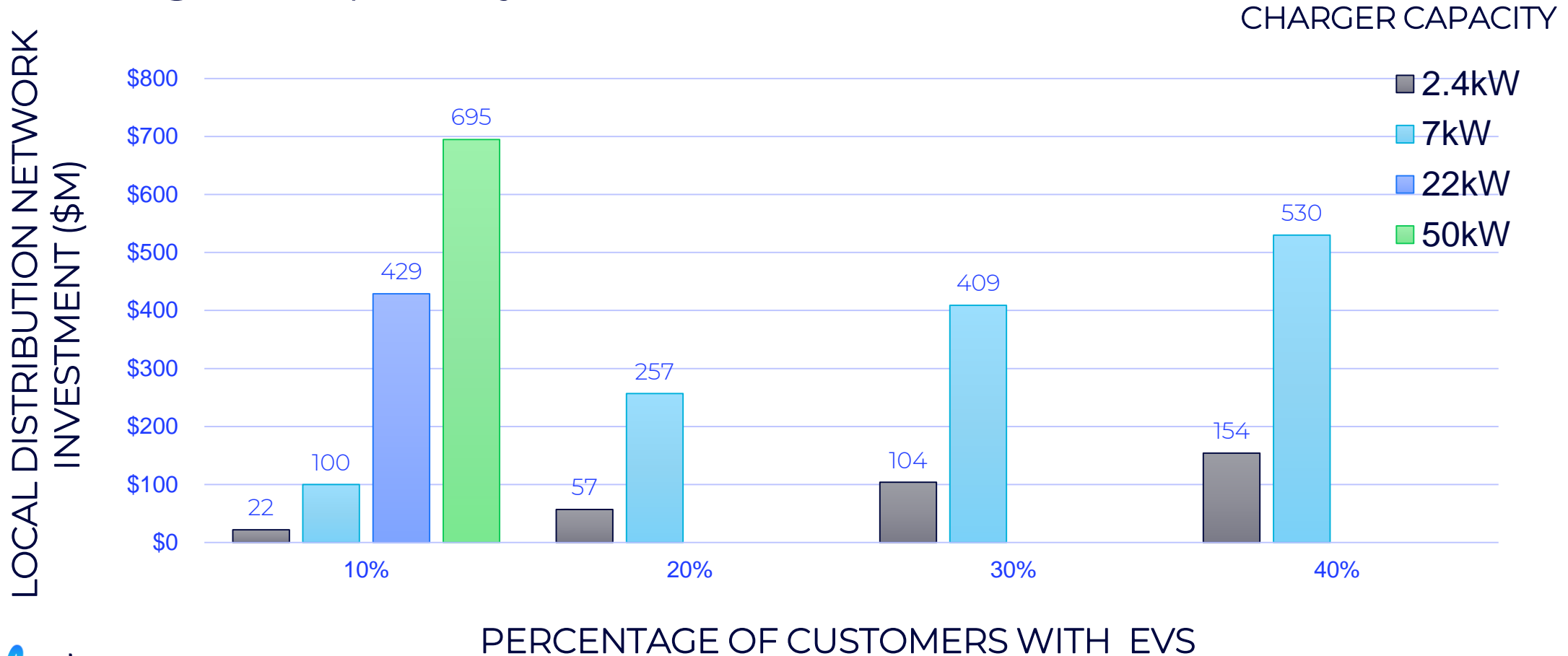
Interim Climate Change Commission call for evidence  
November 2019

# Vector response

## Appendices

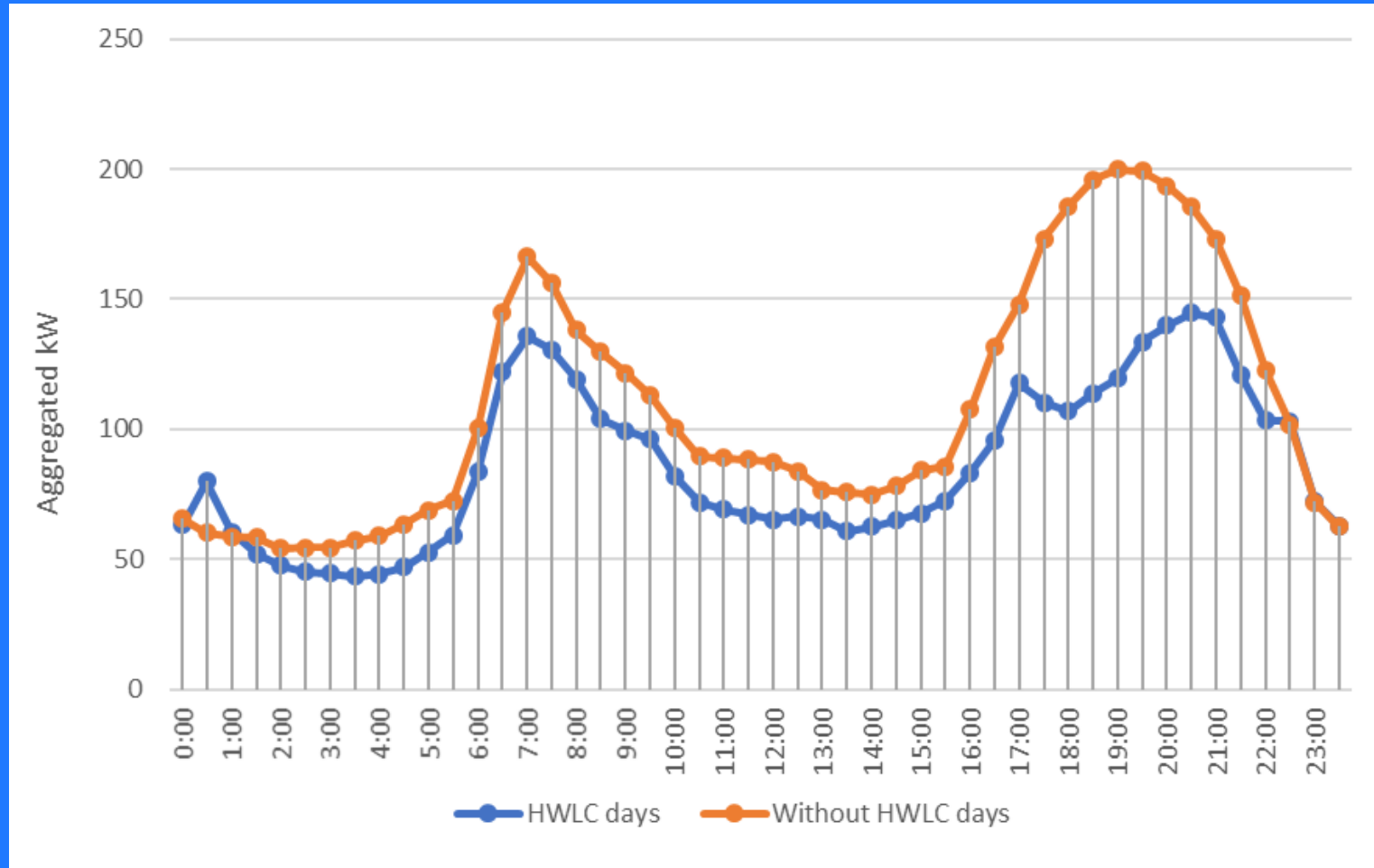


# Appendix 1: Network investment required to support EV charging by level of customer uptake and charger capacity



# Appendix 2: Te Atatū hot water load management

Aggregated (#104 ICPs) average load reduction 0.79kW (down 25 % ADMD)



# Appendix 3: Electricity consumption by deprivation

**GRAPH A:**  
LIKE FOR LIKE PER FLOOR  
AREA PER CUSTOMER



**GRAPH B:**  
CONSUMPTION % CHANGE  
BY DEPRIVATION

