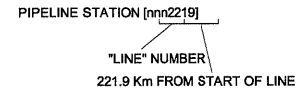


SYMBOL KEY

	OFFTAKE		PIG LAUNCHING TRAP
	DELIVERY POINTS		PIG RECEIVING TRAP
	TELEMETRY (SCADA)		COMPRESSOR STATION
	TELEMETRY (MODEM)		OFFTAKE OR OTHER
	FLOW DIRECTION		MAIN LINE VALVE

STATION No. NOMENCLATURE



9	REVISED FOR VECTOR RE-BRANDING	SKM	AJW	*	SFI	08/2006
8	430 LINE SIZE CORRECTED	AJW	SKM	RDA	SFI	02/2004
7	OTAHUHU A DELIVERY POINT REMOVED	SKH				09/2000
6	WAITOKI LATERAL ADDED	SKH				09/99
5	MURPHY'S RD RENAMED TO FLAT BUSH	SKH				09/99
4	STATION NAMES & NUMBERS CHANGED	SKH				02/99
3	OTARA LATERAL ADDED	SKH				09/98
2	RAMARAMA OFFTAKE MOVED TO CORRECT POSITION (NTH OF GLENBROOK OFFTAKE)	SKH	*	*	*	16/06/97
1	SOUTHDOWN SALES GATE ADDED	SKH	*	*	*	16/10/96
A	ISSUED FOR APPROVAL	KCT	*	*	*	07/06/96
REV	AMENDMENT	DRAWN	CHKD	ENG	APPR	DATE

COPYRIGHT:

The copyright in this document is vested in Vector Gas Limited.

The contents of this document may not be reproduced either in whole or in part, by any means whatsoever without the prior written consent of Vector Gas Limited.



VECTOR GAS LIMITED
PRIVATE BAG 2020
NEW PLYMOUTH 4342
PHONE 0800 734 567

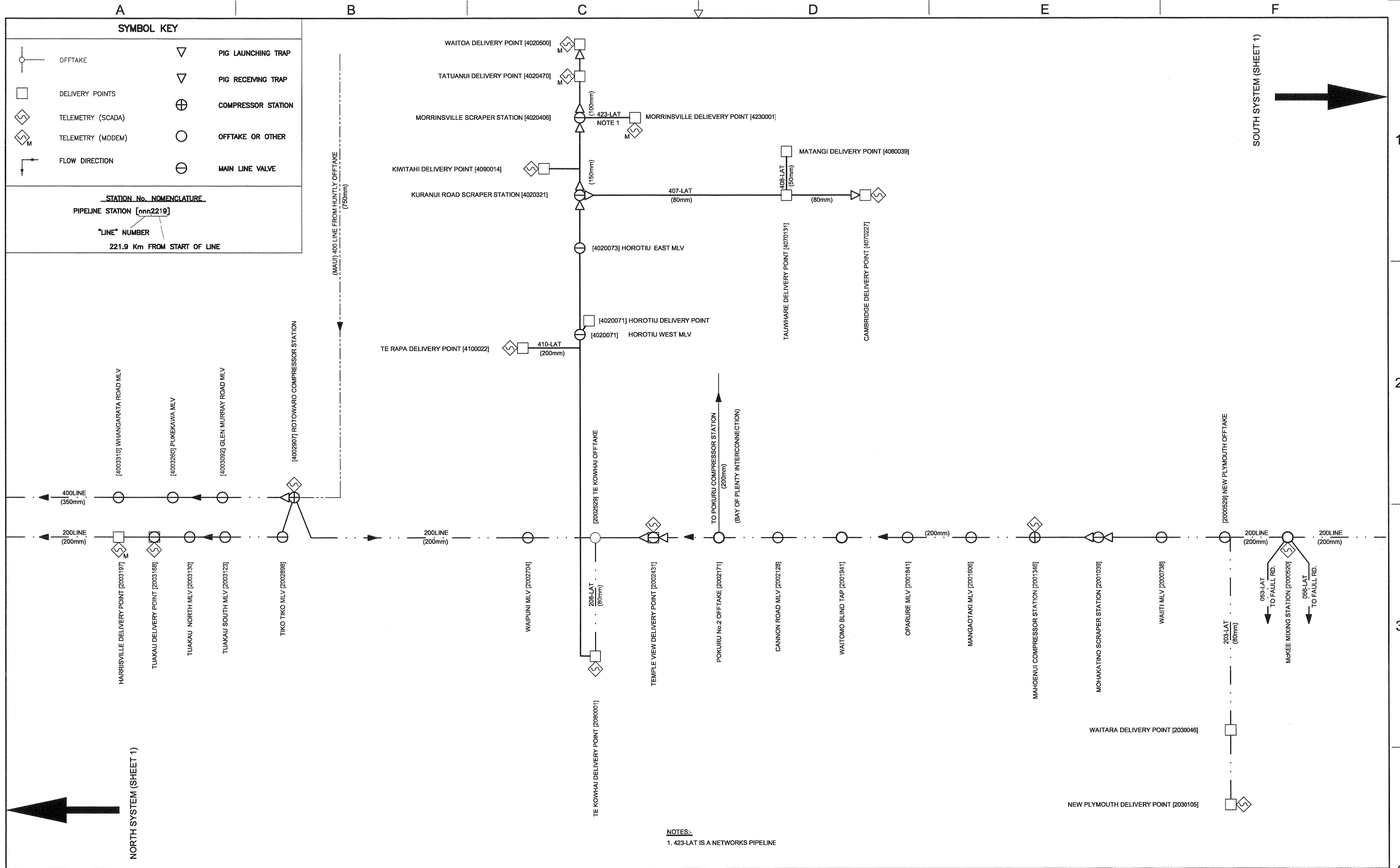
ACTUAL DRAWING SIZE : A1 FRAME A1-ENGFR

REFERENCE DRAWINGS		
	BY	DATE
DRAWN	KCT	04/06/1996
CHECKED		
ENGINEER		
APPROVED		

DISCLOSURE REGULATIONS

GENERAL PIPELINE SCHEMATIC - NORTH SYSTEM 200, 400, 430 LINES

SCALES:	JOB NO.	SERIES	DRG NO.	SHT 01	REV
NTS	DIS-REG	0000	001	OF	9
DO NOT SCALE OFF DRG				06 SHTS	



REV	AMENDMENT	DRAWN	CHKD	ENG	APPR	DATE
7	REVISED FOR VECTOR RE-BRANDING	SKM	AJW		SFI	08/2006
6	FLOW DIRECTIONS CORRECTED	AJW	SKM			08/2005
5	STATION NAMES CORRECTED	AJW	SKM	RD'A	SFI	02/2004
4	TE RAPA SCADA REFERENCE ADDED	SKM	AJW	JKG	OFM	11/2003
3	POKURU No. 2 OFFTAKE ADDED	SKH				09/2000
2	STATION NAMES & NUMBERS CHANGED	SKH				02/99
1	TELEMETRY MODEM SITES INDICATED	SKH				09/98
A	ISSUED FOR APPROVAL	KCT				07/06/96

COPYRIGHT:

The copyright in this document is vested in Vector Gas Limited.

The contents of this document may not be reproduced either in whole or in part, by any means whatsoever without the prior written consent of Vector Gas Limited.

Vector

VECTOR GAS LIMITED
PRIVATE BAG 2020
NEW PLYMOUTH 4342
PHONE 0800 734 567

ACTUAL DRAWING SIZE : A1 FRAME A1-ENGFR

REFERENCE DRAWINGS		
	BY	DATE
DRAWN	KCT	04/06/1996
CHECKED		
ENGINEER		
APPROVED		

DISCLOSURE REGULATIONS					
GENERAL					
PIPELINE SCHEMATIC - KAPUNI TO ROTOWARO/MORRINSVILLE SYSTEM					
SCALES:	JOB NO.	SERIES	DRG NO.	SHT 02	REV
NTS DO NOT SCALE OFF DRG	DIS-REG	0000	001	OF 06 SHTS	7

A

B

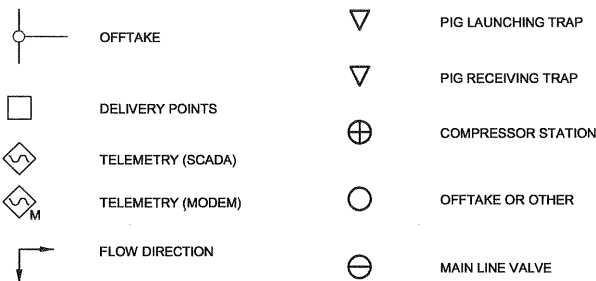
C

D

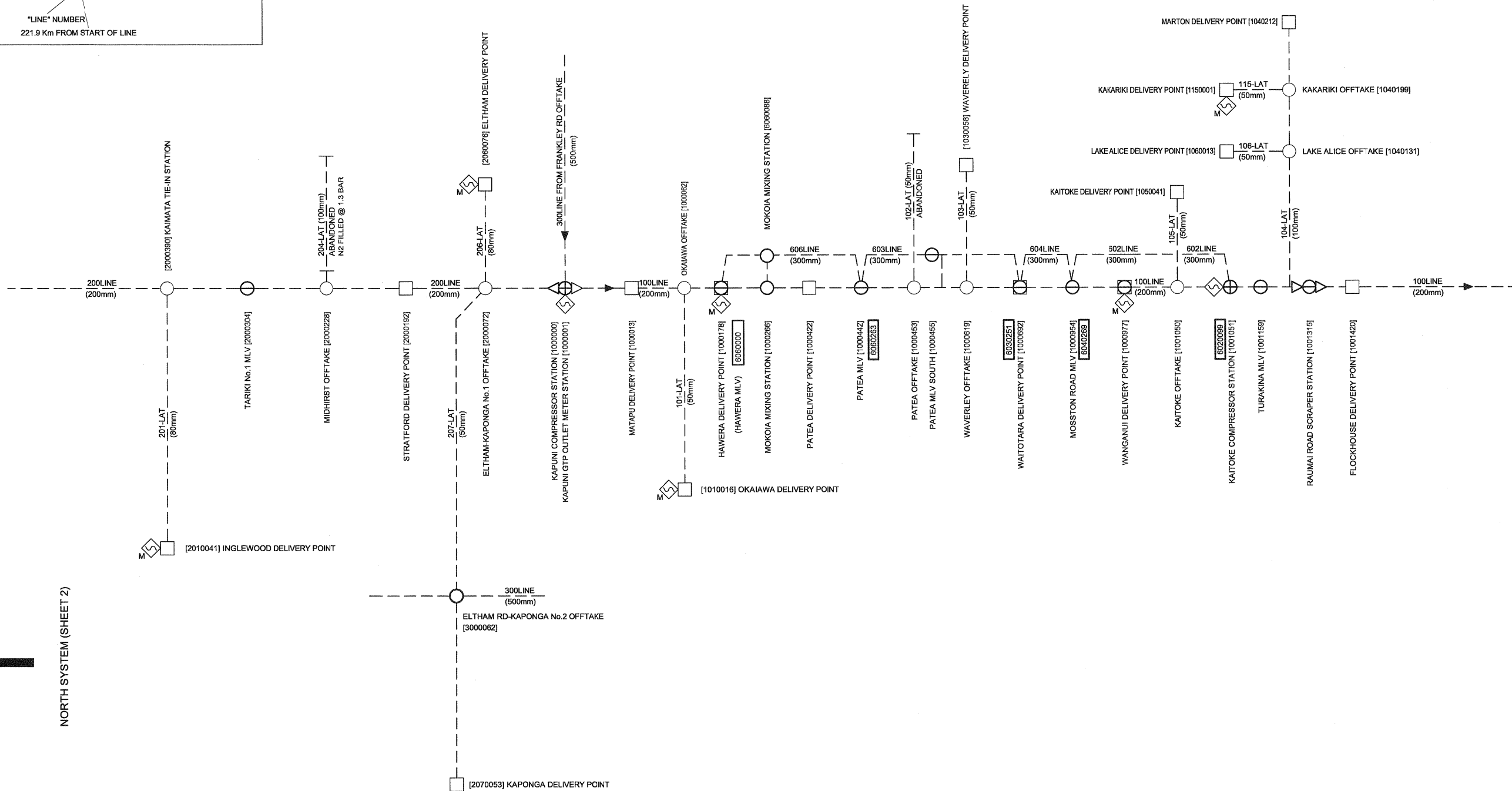
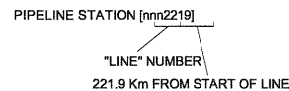
E

F

SYMBOL KEY



STATION No. NOMENCLATURE



NORTH SYSTEM (SHEET 2)

SOUTH SYSTEM (SHEET 2)



6	REVISED FOR VECTOR RE-BRANDING	SKM	AJW	SFI	08/2006	
5	INGLEWOOD O/T CHANGED TO KAIMATA T/I	AJW	SKM		08/2005	
4	MOKOIA MIXING STATION ADDED	AJW	SKM	RDA	02/2004	
3	NOTES ADDED	SKH			09/2000	
2	STATION NAMES UPDATED	SKH			02/99	
1	TELEMETRY MODEM SITES INDICATED	SKH			09/98	
A	ISSUED FOR APPROVAL	KCT			07/06/96	
REV	AMENDMENT	DRAWN	CHKD	ENG	APPR	DATE

COPYRIGHT:

The copyright in this document is vested in Vector Gas Limited.

The contents of this document may not be reproduced either in whole or in part, by any means whatsoever without the prior written consent of Vector Gas Limited.



VECTOR GAS LIMITED
PRIVATE BAG 2020
NEW PLYMOUTH 4342
PHONE 0800 734 567

ACTUAL DRAWING SIZE : A1 FRAME A1-ENGFR

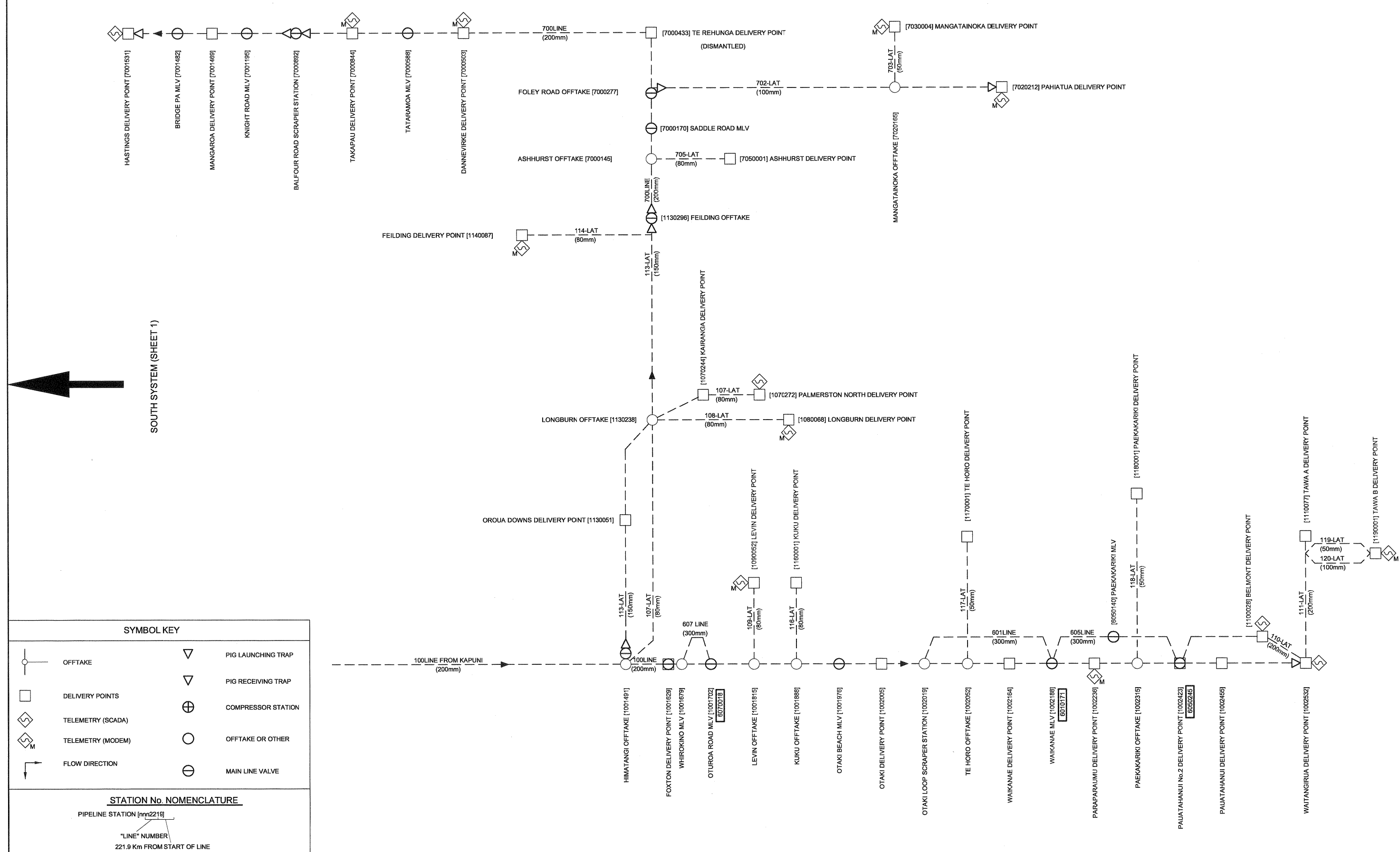
REFERENCE DRAWINGS

	BY	DATE
DRAWN	KCT	04/06/1996
CHECKED		
ENGINEER		
APPROVED		

DISCLOSURE REGULATIONS

GENERAL
PIPELINE SCHEMATIC - SOUTH SYSTEM (SHEET 1)

SCALES: NTS DO NOT SCALE OFF DRG	JOB NO. DIS-REG	SERIES 0000	DRG NO. 001	SHT 03 OF 06 SHTS	REV 6
--	--------------------	----------------	----------------	-------------------------	----------



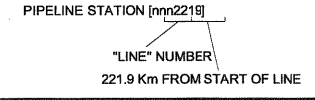
SOUTH SYSTEM (SHEET 1)



SYMBOL KEY

	OFFTAKE		PIG LAUNCHING TRAP
	DELIVERY POINTS		PIG RECEIVING TRAP
	TELEMETRY (SCADA)		COMPRESSOR STATION
	TELEMETRY (MODEM)		OFFTAKE OR OTHER
	FLOW DIRECTION		MAIN LINE VALVE

STATION No. NOMENCLATURE



REV	AMENDMENT	DRAWN	CHKD	ENG	APPR	DATE
6	REVISED FOR VECTOR RE-BRANGING	SKM	AJW	SF1		08/2006
5	120 LATERAL ADDED TO TAWA B	SKM	AW	BS		01/2003
4	STATION NAMES UPDATED	SKH				09/2000
3	STATION NAMES UPDATED	SKH				02/99
2	TELEMETRY MODEM SITES INDICATED	SKH				09/98
1	WHITBY BLIND TAP REMOVED, TAWA B SALES SKH GATE ADDED					01/96
A	ISSUED FOR APPROVAL	KCT				07/06/96

COPYRIGHT:
 The copyright in this document is vested in Vector Gas Limited.
 The contents of this document may not be reproduced either in whole or in part, by any means whatsoever without the prior written consent of Vector Gas Limited.

Vector
 VECTOR GAS LIMITED
 PRIVATE BAG 2020
 NEW PLYMOUTH 4342
 PHONE 0800 734 567
 ACTUAL DRAWING SIZE : A1 FRAME A1-ENGFR

REFERENCE DRAWINGS

	BY	DATE
DRAWN	KCT	04/06/1996
CHECKED		
ENGINEER		
APPROVED		

DISCLOSURE REGULATIONS

GENERAL
 PIPELINE SCHEMATIC - SOUTH SYSTEM (SHEET 2)

SCALES:	JOB NO.	SERIES	DRG NO.	SHT 04 OF 06 SHTS	REV
NTS	DIS-REG	0000	001		6

DO NOT SCALE OFF DRG

A

B

C

D

E

F

SYMBOL KEY

	OFFTAKE		PIG LAUNCHING TRAP
	DELIVERY POINTS		PIG RECEIVING TRAP
	TELEMETRY (SCADA)		COMPRESSOR STATION
	TELEMETRY (MODEM)		OFFTAKE OR OTHER
	FLOW DIRECTION		MAIN LINE VALVE

STATION No. NOMENCLATURE

PIPELINE STATION [nm2219]
 "LINE" NUMBER
 221.9 Km FROM START OF LINE

REV	AMENDMENT	DRAWN	CHKD	ENG	APPR	DATE
5	REVISED FOR VECTOR RE-BRANDING	SKM	AJW	*	SFI	08/2006
4	KAPUNI COMPRESSOR STATION ADDED	AJW	SKM	RD'A	SFI	02/2004
3	FRANKLEY RD OFFTAKE ADDED	SKH				09/2000
2	STATION NAMES & NUMBERS CHANGED	SKH				02/99
1	TCC ADDED	SKH				09/98
A	ISSUED FOR APPROVAL	KCT				07/06/95

COPYRIGHT:

The copyright in this document is vested in Vector Gas Limited.

The contents of this document may not be reproduced either in whole or in part, by any means whatsoever without the prior written consent of Vector Gas Limited.

VECTOR GAS LIMITED
 PRIVATE BAG 2020
 NEW PLYMOUTH 4342
 PHONE 0800 734 567

ACTUAL DRAWING SIZE : A1 FRAME A1-ENGFR

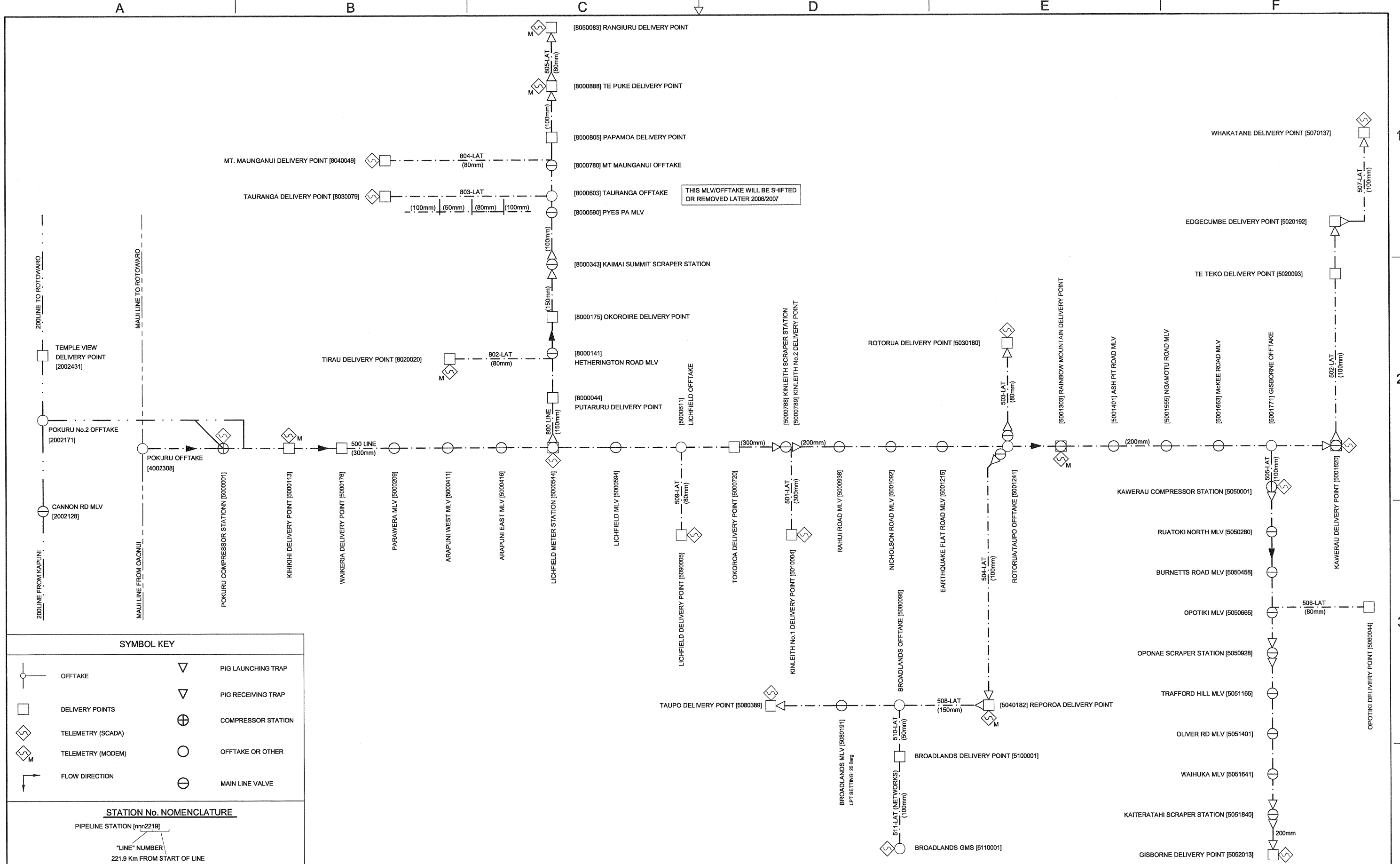
REFERENCE DRAWINGS

	BY	DATE
DRAWN	KCT	04/08/1996
CHECKED		
ENGINEER		
APPROVED		

DISCLOSURE REGULATIONS

GENERAL
 PIPELINE SCHEMATIC - FRANKLEY ROAD TO KAPUNI

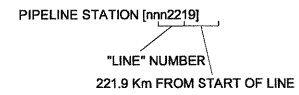
SCALES:	JOB NO.	SERIES	DRG NO.	SHT 05 OF 06 SHTS	REV 5
NTS DO NOT SCALE OFF DRG	DIS-REG	0000	001		



SYMBOL KEY

	OFFTAKE		PIG LAUNCHING TRAP
	DELIVERY POINTS		PIG RECEIVING TRAP
	TELEMETRY (SCADA)		COMPRESSOR STATION
	TELEMETRY (MODEM)		OFFTAKE OR OTHER
	FLOW DIRECTION		MAIN LINE VALVE

STATION No. NOMENCLATURE



REV	AMENDMENT	DRAWN	CHKD	ENG	APPR	DATE
5	REVISED FOR VECTOR RE-BRANDING	SKM	AJW	SFI		08/2006
4	BROADLANDS OFFTAKE, DP & GMS ADDED	AJW	SKM			08/2005
3	200 LINE TIE-IN ADDED	SKH				09/2000
2	STATION NAMES CHANGED	SKH				02/99
1	TELEMETRY MODEM SITES INDICATED	SKH				09/98
A	ISSUED FOR APPROVAL	KCT				//

COPYRIGHT:

The copyright in this document is vested in Vector Gas Limited.

The contents of this document may not be reproduced either in whole or in part, by any means whatsoever without the prior written consent of Vector Gas Limited.



VECTOR GAS LIMITED
PRIVATE BAG 2020
NEW PLYMOUTH 4342
PHONE 0800 734 567

ACTUAL DRAWING SIZE : A1 FRAME A1-ENGFR

REFERENCE DRAWINGS

	BY	DATE
DRAWN	KCT	10/06/1996
CHECKED		
ENGINEER		
APPROVED		

DISCLOSURE REGULATIONS

GENERAL PIPELINE SCHEMATIC - BAY OF PLENTY SYSTEM

SCALES:	JOB NO.	SERIES	DRG NO.	SHT 06 OF 06 SHTS	REV
NTS DO NOT SCALE OFF DRG	DIS-REG	0000	001		5